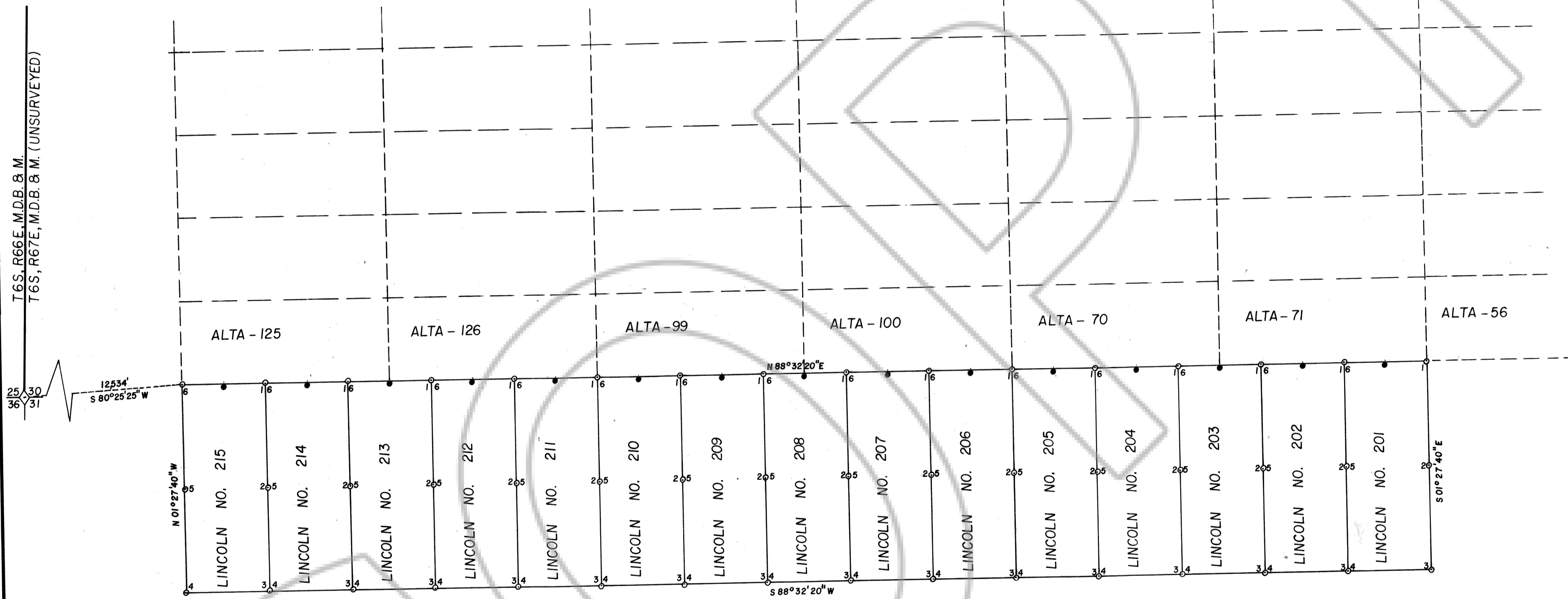


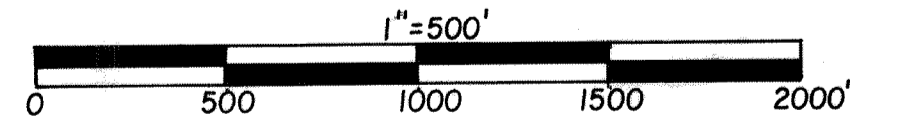


UNSURVEYED, T6S, R67E, MDB. & M.



LEGEND

- Claim post
- Location mon.



No. 70228
 THIS MAP RECORDED AT REQUEST OF
 HULSE ENGINEERING
 MAY 21, 1981
 AT 15 MINUTES TO 9 O'CLOCK
 AREA BOOK 44 OFFICIAL
 267 LINCOLN
 Y. W. O. METZGER
 Carbon, Nevada, Deputy

**MAP OF THE
 LINCOLN LODGE CLAIMS NOS. 201-215**
 Located in unsurveyed T6S, R67E, MDB & M
 Pennsylvania Mining District
 Lincoln County, Nev.
 Located by: LINCOLN EXPLORATION INC.
 600 EAST CHARLSTON BLVD.
 LAS VEGAS, NEV. 89104

44 267