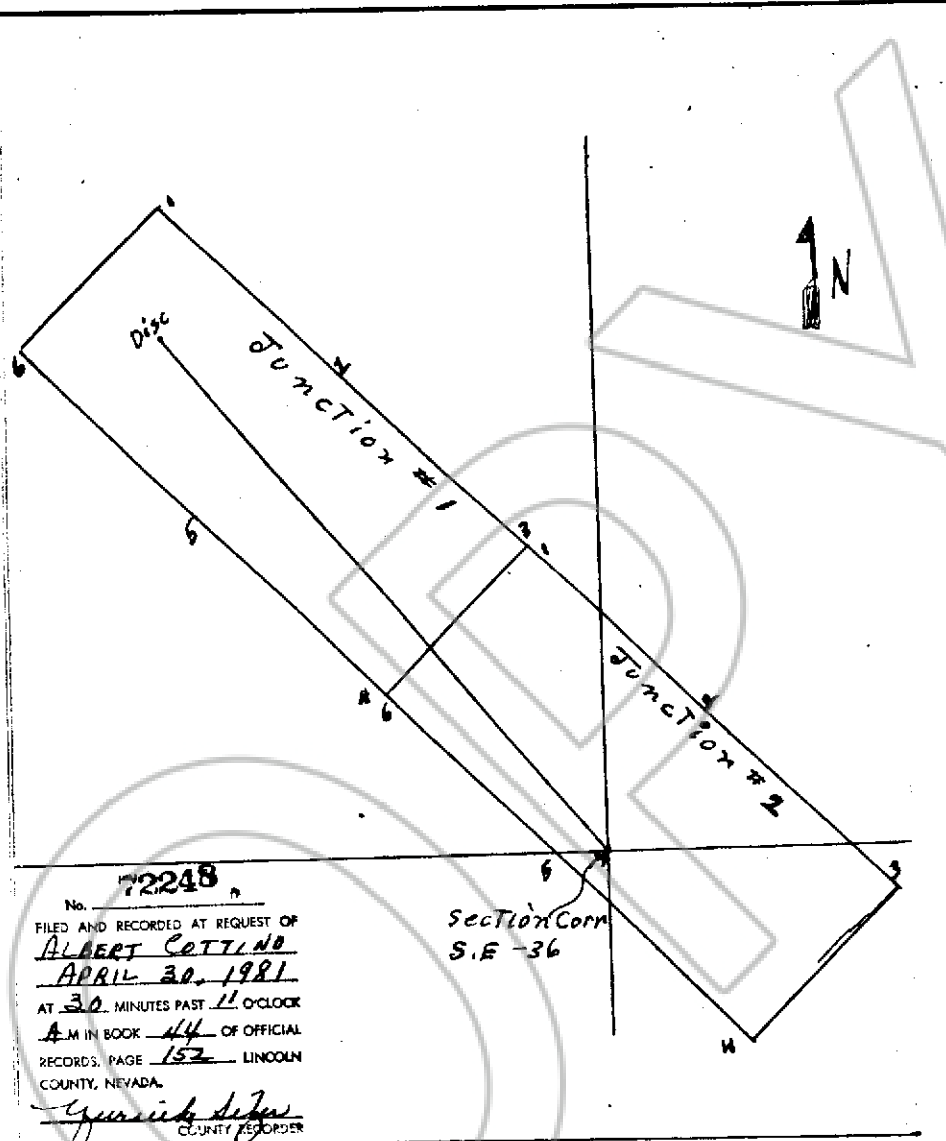


Lincoln County

1
2
3
4
5
6
7
8
9
10
11
12
13
14
15
16
17
18
19
20
21
22
23
24
25
26
27
28
29
30



No. 72248
 FILED AND RECORDED AT REQUEST OF
ALBERT COTTINO
APRIL 30, 1981
 AT 30 MINUTES PAST 11 O'CLOCK
 A.M. IN BOOK 44 OF OFFICIAL
 RECORDS, PAGE 152 LINCOLN
 COUNTY, NEVADA.
Guswick
 COUNTY RECORDER

JUNCTION #2 North end line same as south
 end line of Junction #1 corners 3+1 4+6
 Section -36 Township-1N Range-67E
 Mining District - Ely
 County - Lincoln
 locator - Albert G. Cottino Pioche, Nevada