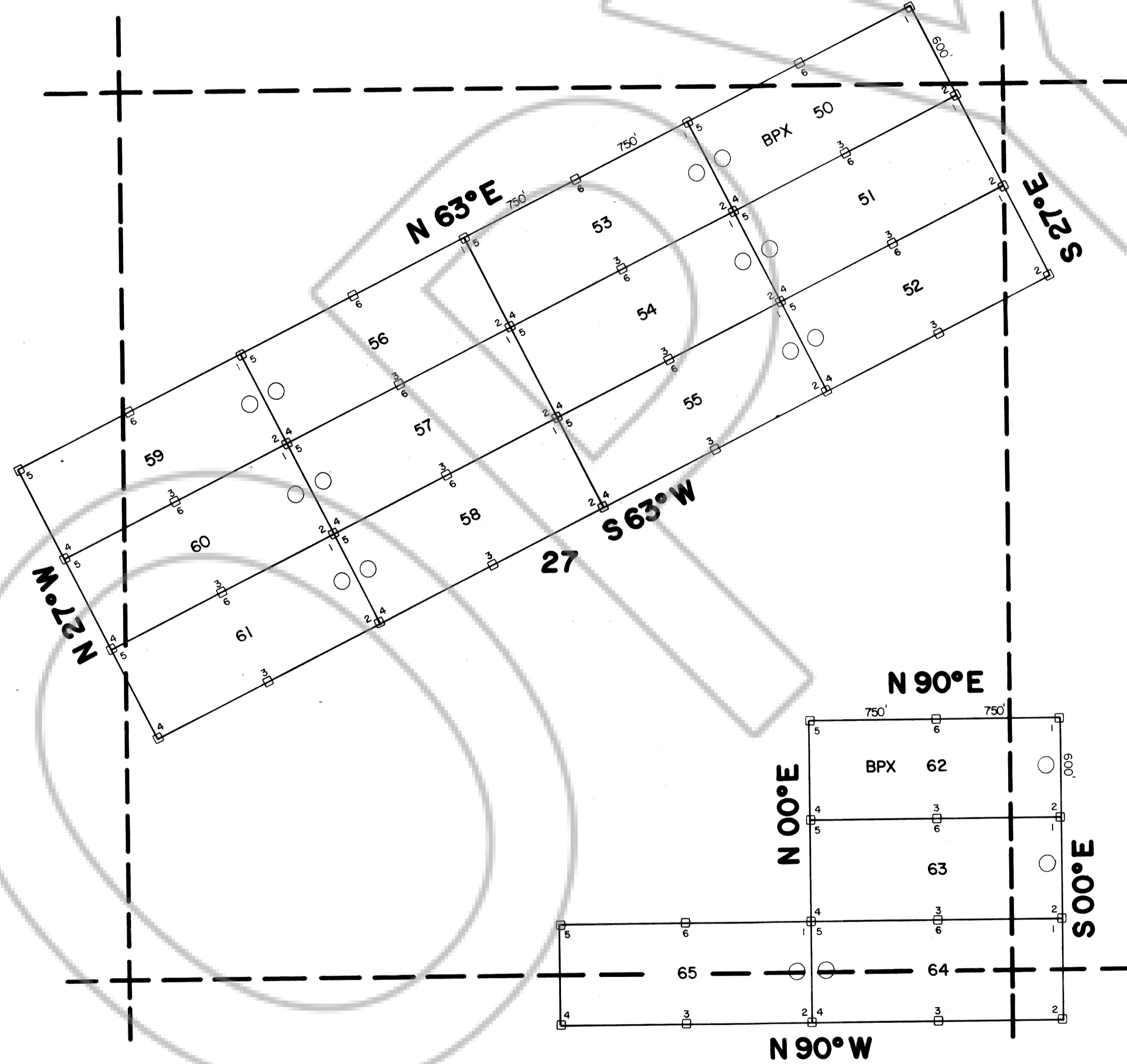


R. 66 E.

22



28

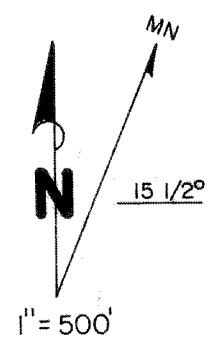
27

26

T. 1 N.

34

35



○-LOCATION MONUMENT
 ALL CLAIMS ARE 600'x1500' UNLESS OTHERWISE NOTED.
 ALL LOCATION MONUMENTS ARE OFFSET 10' FROM END CENTERS UNLESS OTHERWISE NOTED.
 ALL LOCATION MONUMENTS, SIDE CENTERS AND CORNERS ARE MONUMENTED WITH 4"x4"x4 1/2' WOODEN POSTS.

SURVEY MAP
 OF
 LODE MINING CLAIMS
 WITHIN
 TOWNSHIP 1 NORTH, RANGE 66 EAST
 MOUNT DIABLO MERIDIAN
 LINCOLN COUNTY, NEVADA
 FOR
TEXASGULF WESTERN, INC.
 5934 MEINTYRE STREET
 GOLDEN, COLORADO 80401

BPX CLAIMS 50-65
 LOCATED - MARCH 19, 20 & 22, 1981

72212
 Rocky Mtn. Surveyors
 APR. 23, 1981
 P 44 / 100
Karen Anderson, Deputy

44 100