

R. 66 E. R. 67 E.

19

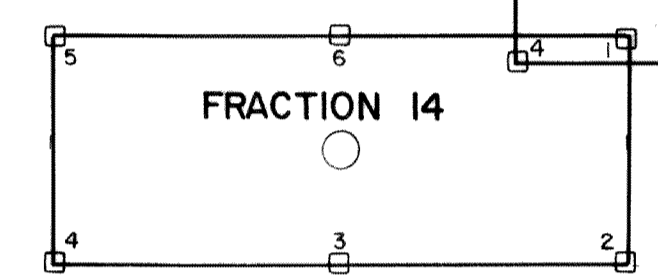
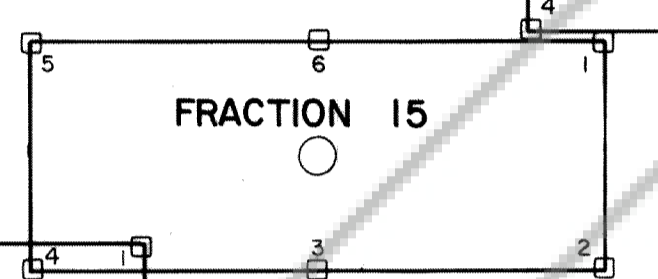
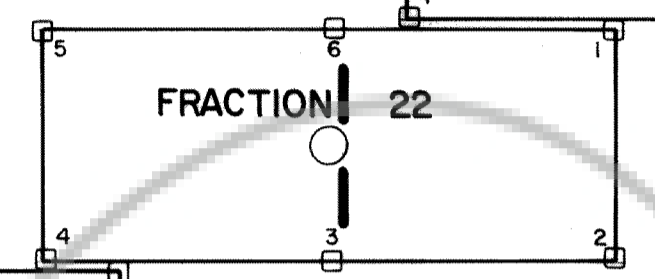
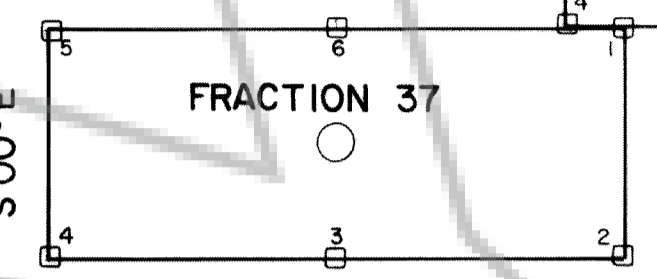
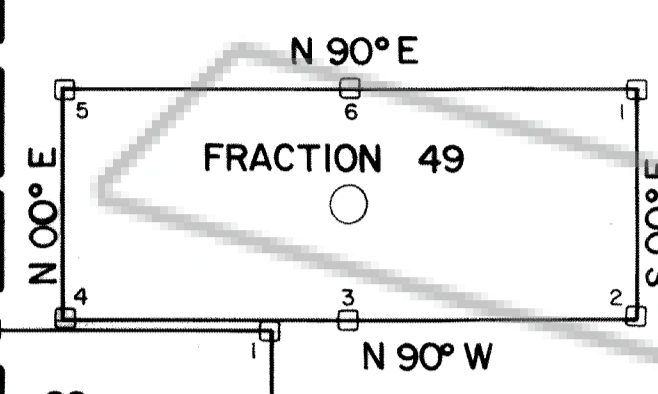
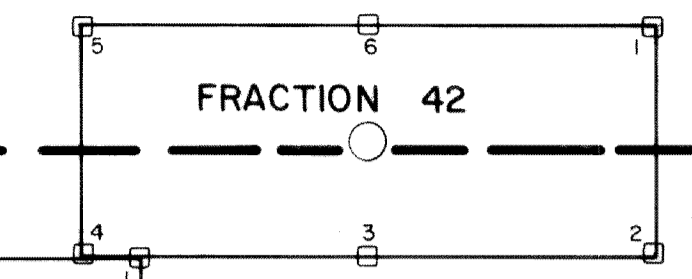
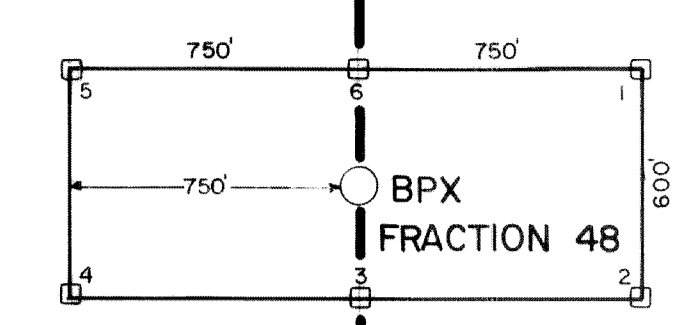
23

24

25

26

T. 19 N.



○ LOCATION MONUMENT
 ALL CLAIMS ARE 600'x1500' UNLESS OTHERWISE NOTED.
 ALL LOCATION MONUMENTS ARE OFFSET 10' FROM END CENTERS UNLESS OTHERWISE NOTED.
 ALL LOCATION MONUMENTS, SIDE CENTERS AND CORNERS ARE MONUMENTED WITH 4"x4"x1/2" WOODEN POSTS.

SURVEY MAP
 OF
LODE MINING CLAIMS
 WITHIN
 TOWNSHIP 19 NORTH, RANGES 66 & 67 EAST
 MOUNT DIABLO MERIDIAN
 LINCOLN COUNTY, NEVADA
 FOR
TEXASGULF WESTERN, INC.
 5934 MOUNTAIN STREET
 GOLDEN, COLORADO 80401

BPX FRACTION CLAIMS 14, 15, 22, 37, 42, 48 & 49
 LOCATED - MARCH 12, 13, 1981

72211
 Rocky Mtn. Surveyors
 APR 23, 1981
 P 44 / 99
Karen Henderson

