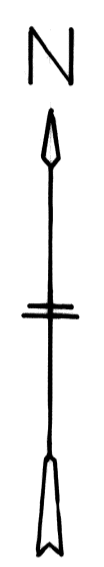
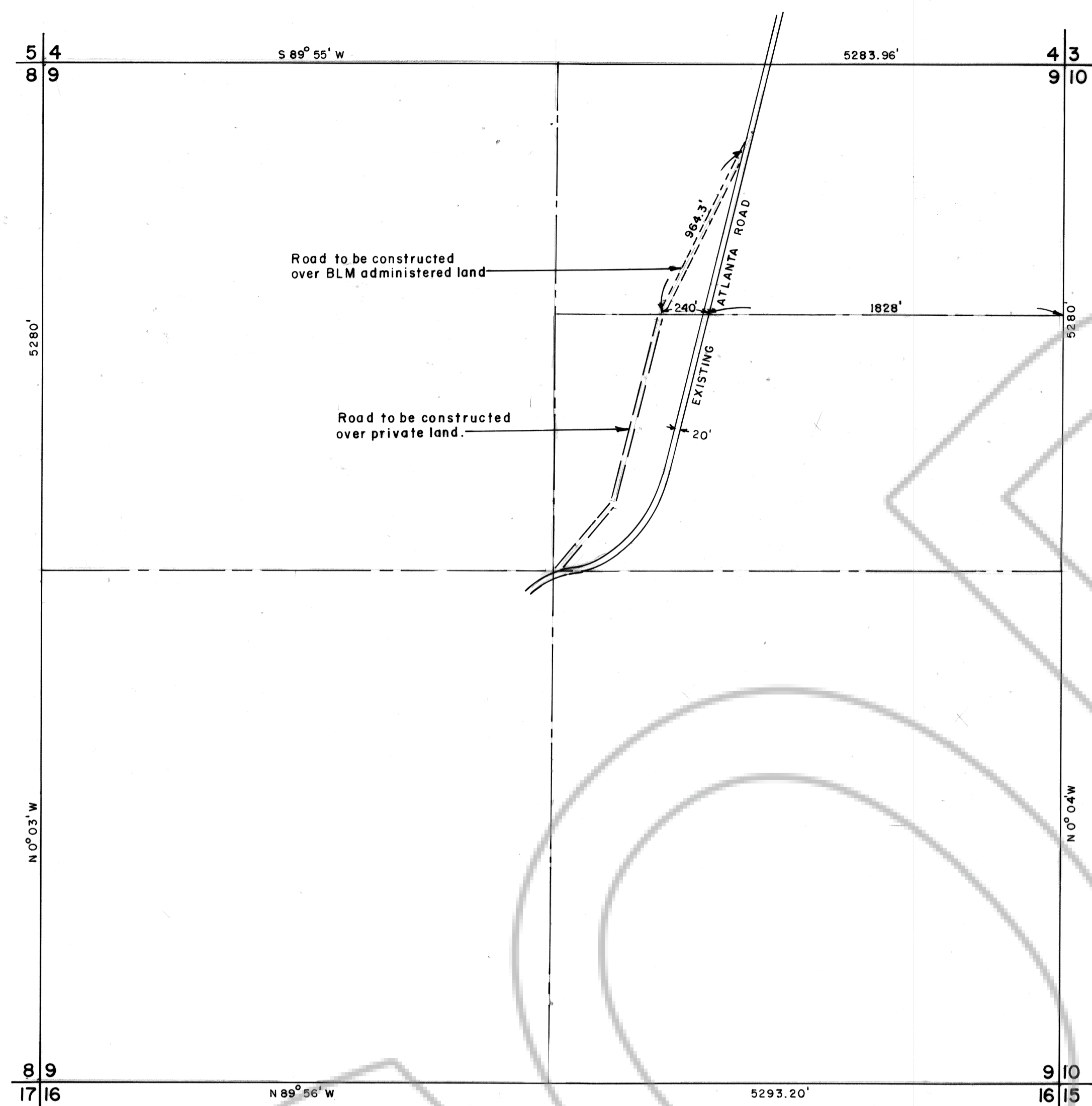


SURVEYOR'S CERTIFICATE

I, Philip C. Hulse, A Registered Land Surveyor and Lincoln County Surveyor, do hereby certify that this map is a true and accurate representation of roads shown hereon and surveyed under my direct supervision and completed on the 13th day of September, 1977 at the instance of the Board of Commissioners of Lincoln County, Nevada.



*Philip C. Hulse*  
Philip C. Hulse  
Registered Land Surveyor #3644



SECTION 9  
TOWNSHIP 6 NORTH, RANGE 68 EAST, M. D. B & M.

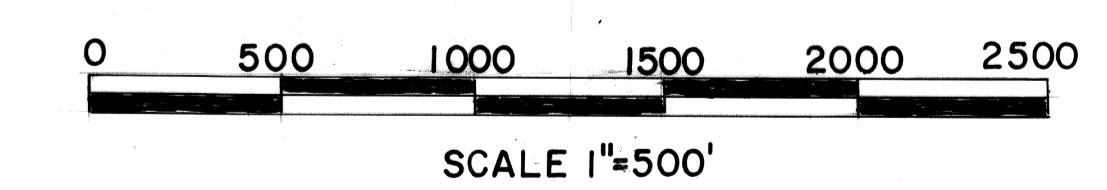
APPROVAL

Approved this \_\_\_\_\_ day of \_\_\_\_\_, 1977 by the Board of Commissioners of Lincoln County, Nevada.

\_\_\_\_\_  
Chairman

Attest - County Clerk

Notary Public, State of Nevada  
LINCOLN COUNTY  
Daniel A. Dils  
My Appointment Expires Feb. 28, 1984  
*Daniel A. Dils*



No. 68468  
FILED AND RECORDED AT REQUEST OF  
County Surveyor  
May 7, 1980  
AT 5:02 MINUTES PAST 2 O'CLOCK  
P. M. IN BOOK PLAT-A OF ORIGINAL  
RECORDS, PAGE 157 LINCOLN  
COUNTY, NEVADA.  
*Francis D. Selzer*  
COUNTY RECORDER

MAP TO ACCOMPANY APPLICATION  
TO BLM FOR RELOCATION OF COUNTY ROAD  
SEC. 9, T6N, R68E, M.D.B & M.  
LINCOLN COUNTY, NEVADA

HULSE ENGINEERING  
PHILIP C. HULSE R.L.S. 3644