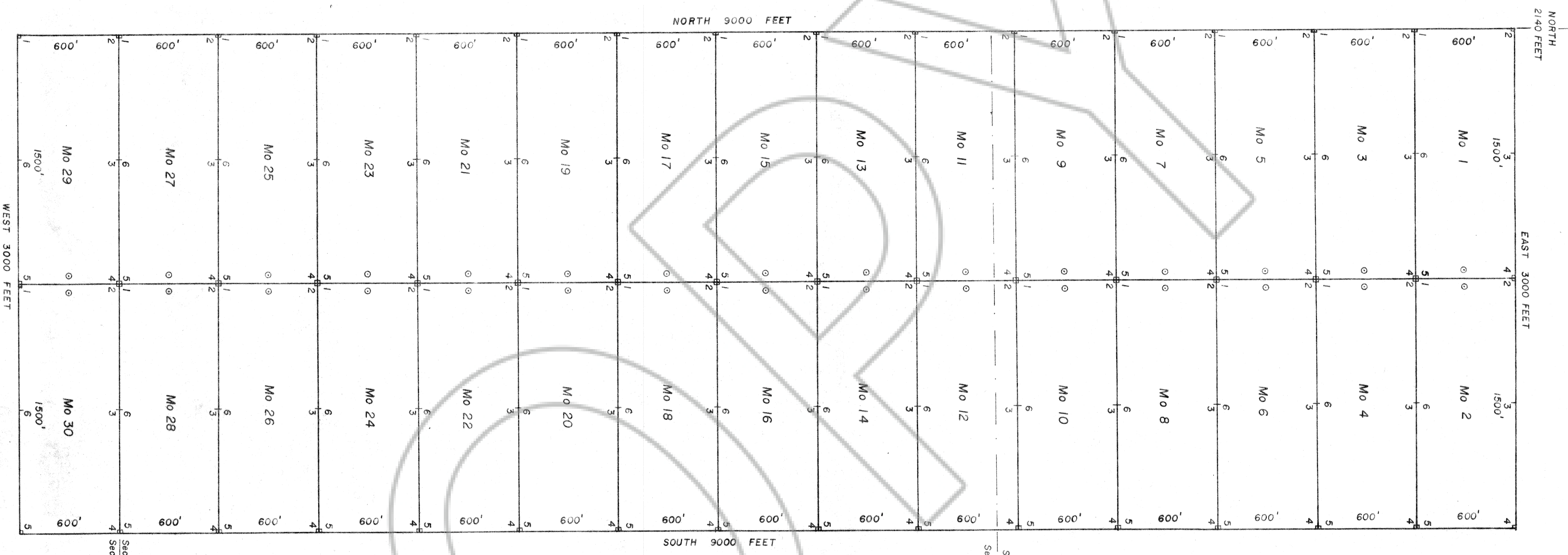


T.1N., R.56E., 1/6  
 12/7 T.1N., R.57E.  
 Section corner found.



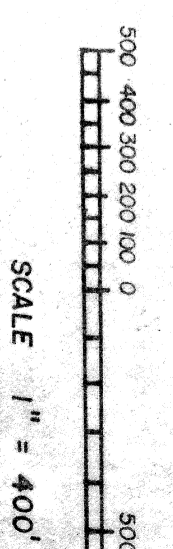
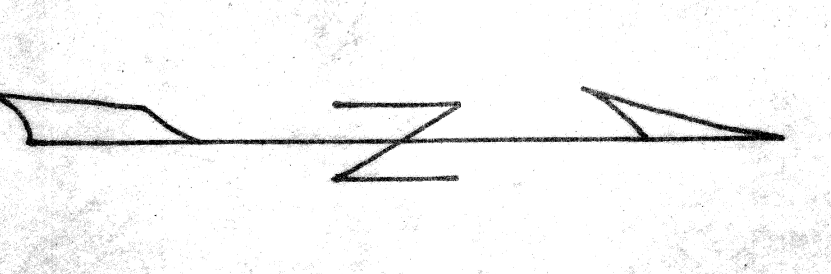
NORTH  
2140 FEET

EAST 3000 FEET

NORTH 9000 FEET

SOUTH 9000 FEET

WEST 3000 FEET



Approx. position  
of section line.  
Section 18  
Section 19

Approx. position of section line.  
Section 7  
Section 18

DATES OF LOCATION  
 Mo 1-18 NOVEMBER 2, 1979  
 Mo 19-30 NOVEMBER 3, 1979

**EXPLANATION**  
 ○ LOCATION MONUMENT  
 + CORNER  
 — SIDE CENTER

*Doc# W08*  
**MAP OF THE MO**  
 SECTIONS 7, 18 & 19, T.1N.,  
 LINCOLN COUNTY, NEVAD  
 OWNER: JEFF KNAEB  
 BOX 814E  
 FAIRBAY