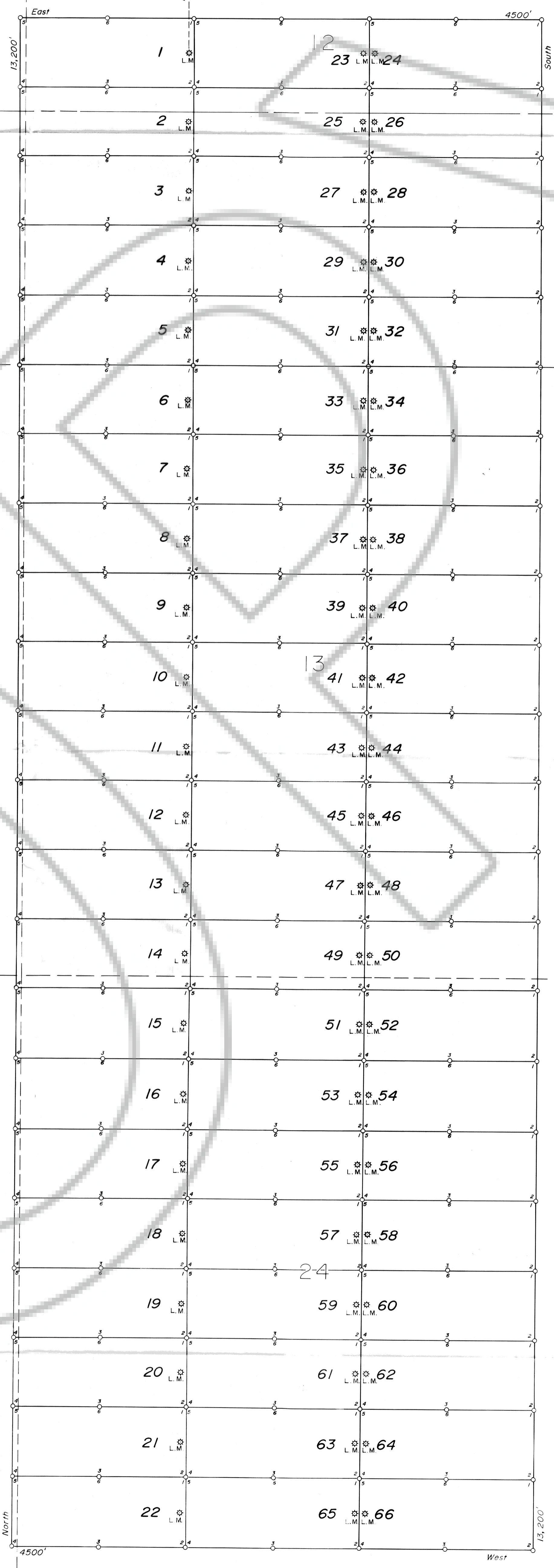


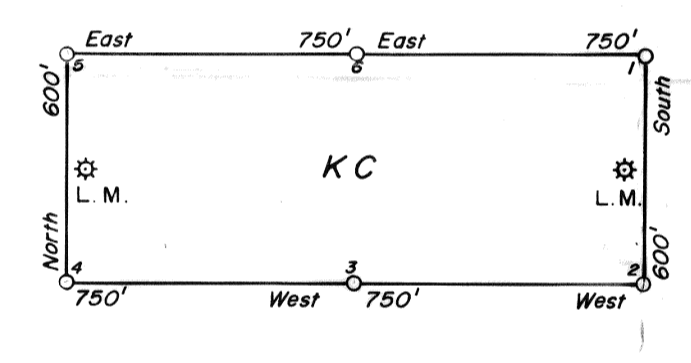
To the NW Corner of Sec. 6, T. 2 N., R. 54 E. ← 27,800' West

7,800' North

Nye County
Lincoln County
(county line not official)



TYPICAL CLAIM

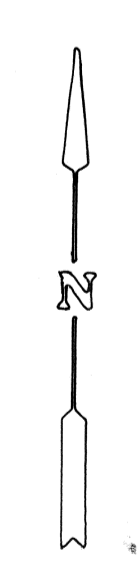


All corners are 4" x 4" wooden posts.
All location monuments are 4" x 4" wooden posts and are 50' from either east or west end of the claim.
All claims are 600' x 1500' lodes.

LOCATOR:
Johnny Lavin (Agent for.)
INSPIRATION DEVELOPMENT COMPANY
P.O. Box 87,
Inspiration, Arizona 85537

LOCATION DATE:
KC 1-32 — November 7, 1979
KC 33-66 — November 6, 1979

T. 2 N.



This claim group is situated in an unsurveyed area. All section lines were projected.

R. 54 E.
R. 55 E.

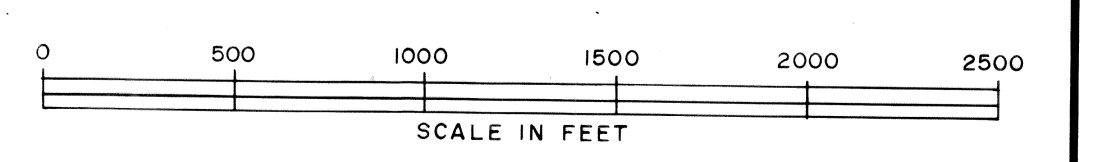
66437
Inspiration Development
Nov. 22, 1979
P 33
845

John Anderson
Agent

INSPIRATION DEVELOPMENT COMPANY

CLAIM MAP
KC CLAIM GROUP
NYCO MINING DISTRICT
NYE and LINCOLN COUNTIES, NEVADA
T. 2 N., R. 54 E., M. D. M.
(QUINN CANYON RANGE)

RECORDER'S STAMP



October, 1979

Drafted by: G. S. Anderson
33 Nov 515