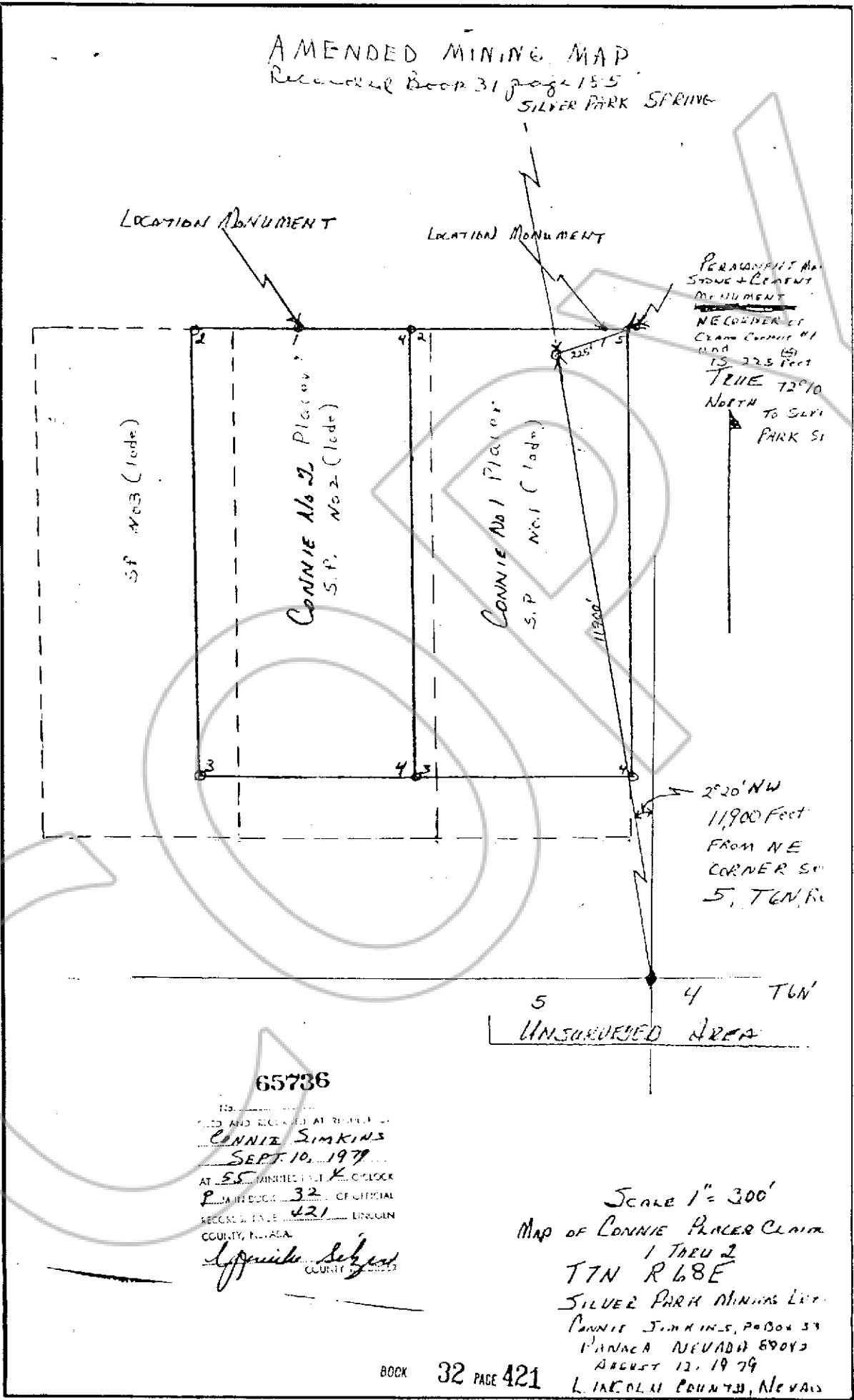


AMENDED MINING MAP
RECORDED BOOK 31 PAGE 155
SILVER PARK SPRING



LOCATION MONUMENT

LOCATION MONUMENT

PERMANENT ANGLE
STONE & CEMENT
MONUMENT
NE CORNER OF
CLAIM CORNER #1
WAS 225 FEET
TRUE 72°10'
NORTH TO SILVER
PARK SPRING

S. P. No. 3 (1000)

CONNIE No 2 Placer
S. P. No. 2 (1000)

CONNIE No 1 Placer
S. P. No. 1 (1000)

2°20' NW
11,900 Feet
FROM NE
CORNER SECTION
5, T6N, R8E

5 4 T6N
UNSUBMERGED AREA

65736

FILED AND RECORDED AT REQUEST OF
CONNIE SIMKINS
SEPT. 10, 1979
AT 5:55 MINUTES P.M. O'CLOCK
P. M. IN BOOK 32 OF OFFICIAL
RECORDS, PAGE 421 LINCOLN
COUNTY, NEVADA
Lynette Scher
COUNTY CLERK

SCALE 1" = 300'
MAP OF CONNIE PRAGER CLAIM
1 T6N 2
T7N R 68E
SILVER PARK MINING LIT.
CONNIE SIMKINS, P.O. BOX 53
LINCOLN NEVADA 89043
AUGUST 12, 1979
LINCOLN COUNTY, NEVADA