



SCALE: 1" = 500'

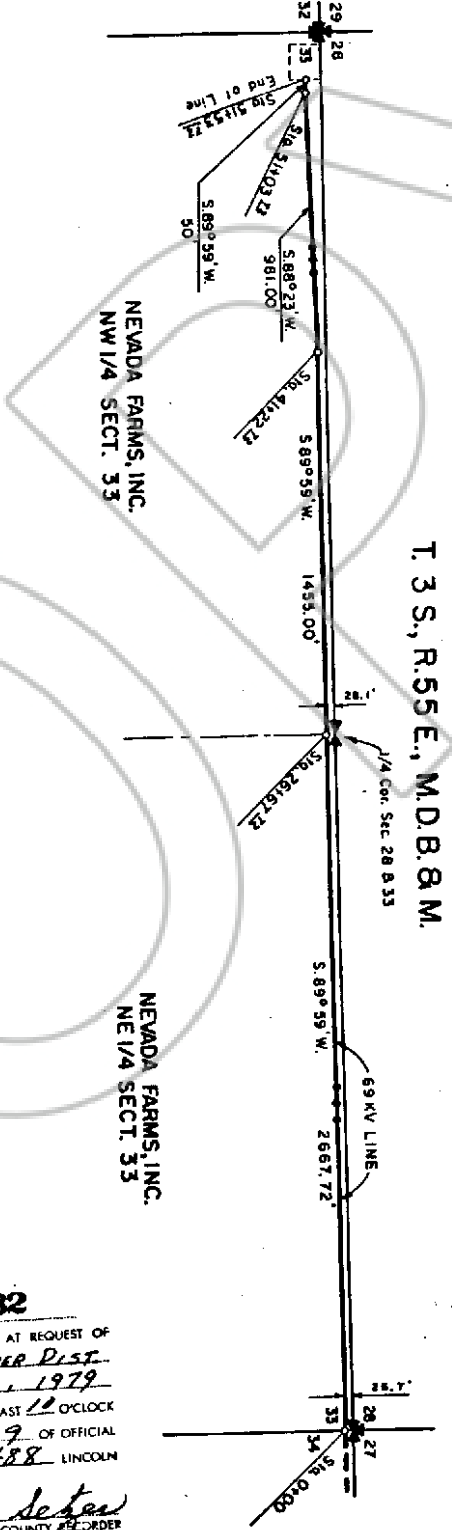


ENGINEER'S FIELD NOTES

Beginning at Station 0+00, said station being 26.7' South of the common corners of Sections 27, 28, 33 & 34, T.3S., R.55E., NW 1/4 SECT. 33, a distance of 2667.72' to Station 1+00, thence S. 89° 59' W., a distance of 1455.00' to Station 2+00, thence S. 89° 59' W., a distance of 981.00' to Station 3+00, thence S. 89° 59' W., a distance of 50.00' to Station 4+00, thence S. 89° 59' W., a distance of 2667.72' to Station 5+00, thence S. 89° 59' W., a distance of 1455.00' to Station 6+00, which is the end of the 69 KV line.

The above described right-of-way being 40' in width, 20' each side of centerline, .98 miles in length and containing approximately 4.73 acres. This right-of-way is desired for an electrical 69 KV transmission line.

ENGINEER'S FIELD NOTES



T. 3 S., R. 55 E., M. D. B. & M.

69 KV LINE

RIGHT - OF - WAY EASEMENT FOR  
CROSSING LAND OWNED BY NEVADA FARMS, INC.  
BY LINCOLN CO. POWER DISTRICT NO. 1

LEE ENGINEERING  
ELKO, NEVADA

DATE 2-14-76  
DWN: RLJ

No. 64082

FILED AND RECORDED AT REQUEST OF  
*Lin. Co. Power Dist.*  
*APR. 6, 1979*

AT *5* MINUTES PAST *12* O'CLOCK  
A.M. IN BOOK *29* OF OFFICIAL  
RECORDS, PAGE *488* LINCOLN  
COUNTY, NEVADA

*Spencer Dejean*  
COUNTY RECORDER