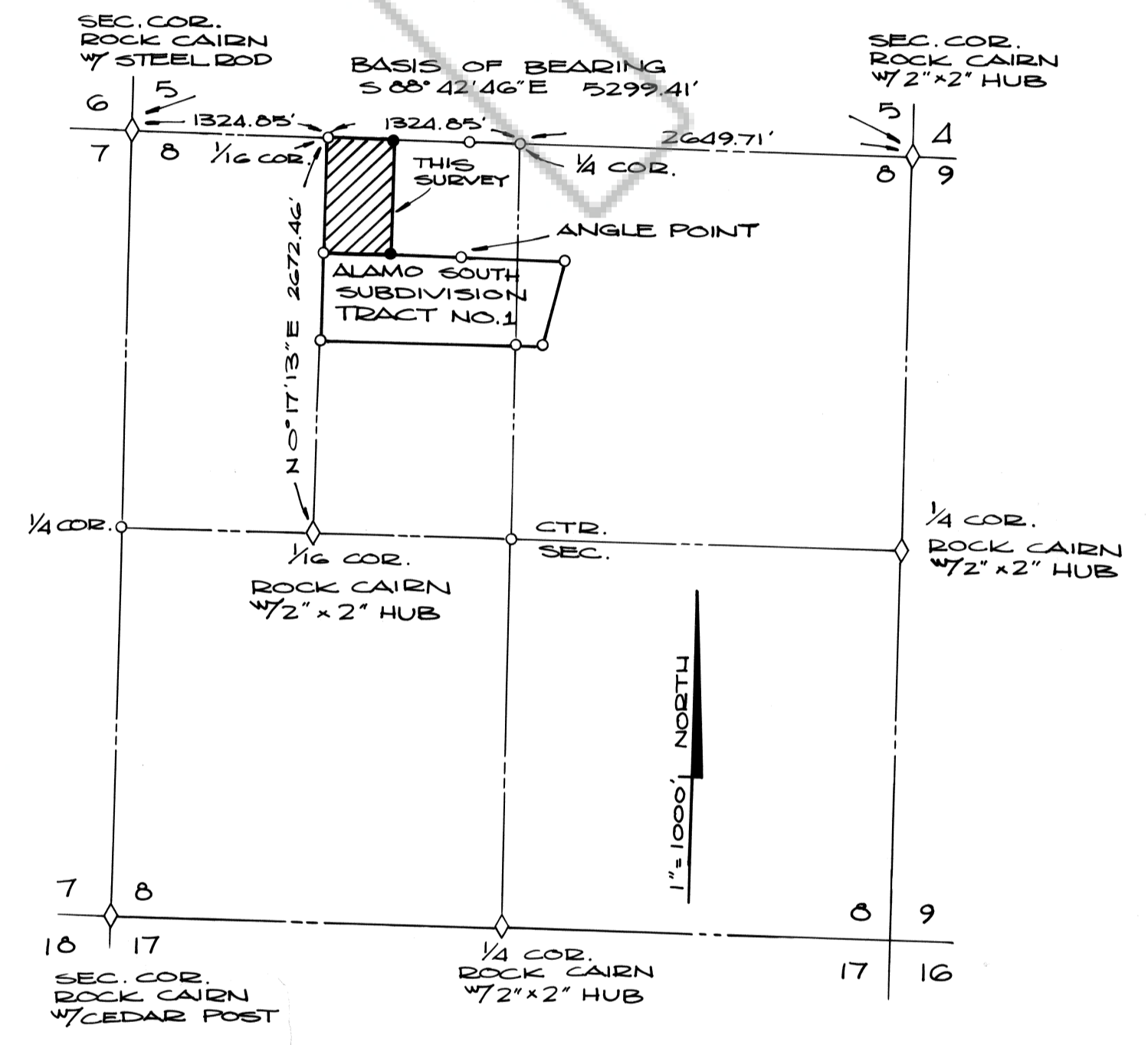
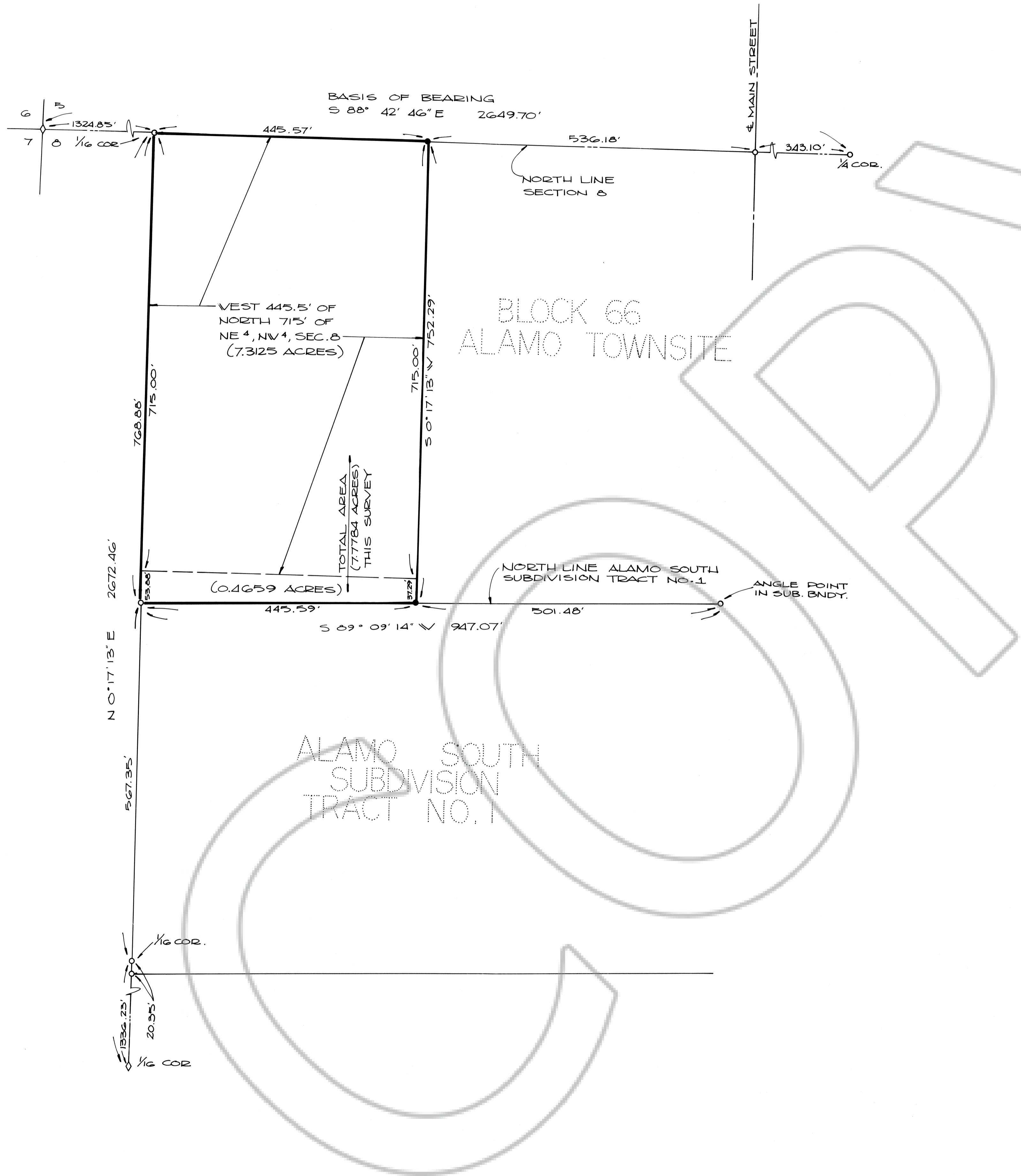


SURVEYORS CERTIFICATE

I, TEVFIZ TUDEGUN, A REGISTERED LAND SURVEYOR IN THE STATE OF NEVADA, CERTIFY THAT:

1. THIS IS A TRUE AND ACCURATE REPRESENTATION OF THE LANDS SURVEYED UNDER MY SUPERVISION AT THE INSTANCE OF UNION CARBIDE CORPORATION.
2. THE LANDS SURVEYED LIE WITHIN SECTION 8, T7S, R61E, MDB#M AND THE SURVEY WAS COMPLETED ON 9 DECEMBER 1977.
3. THIS PLAT COMPLIES WITH THE APPLICABLE STATE STATUTES AND ANY LOCAL ORDINANCES.
4. THE MONUMENTS ARE OF THE CHARACTERS SHOWN AND OCCUPY THE POSITIONS INDICATED.

Tevfiz Tudegun
 TEVFIZ TUDEGUN, PE
 REGISTERED LAND SURVEYOR
 NEVADA CERTIFICATE NO. 1118



PROCEDURE OF SURVEY

LEGEND

- ◊ - FOUND ROCK CAIRN AS NOTED.
- - FOUND ALCAP MKD. RLS 2379.
- - SET #5 REBAR w/ PLASTIC CAP MKD RLS 1118.

BASIS OF BEADING

THE NORTH LINE OF SECTION 8, T7S, R61E, MDB#M PER RECORD OF SURVEY 70-1204; 1E. S 88° 42' 46" E

PREPARED BY: TUDEGUN & ASSOCIATES 3451 LOSEE ROAD NORTH LAS VEGAS, NEVADA 89030 PHONE: (702) 642-2676	RECORD OF SURVEY A PORTION OF THE NE 1/4, NW 1/4, SECTION 8 T7S, R61E, MDB#M LINCOLN COUNTY, NEVADA	NO. 01985 RECORDED AT THE REQUEST OF UNION CARBIDE CORPORATION DATE MAY 31 1978 AT 11:25AM FILE A PLATS PAGE 136 OF SURVEYS OFFICIAL RECORDS BK. NO. LINCOLN COUNTY, NEV. RECORDS <i>Dominick Belinghedi</i> DOMINICK BELINGHEDI RECORDED
	FOR UNION CARBIDE CORPORATION	