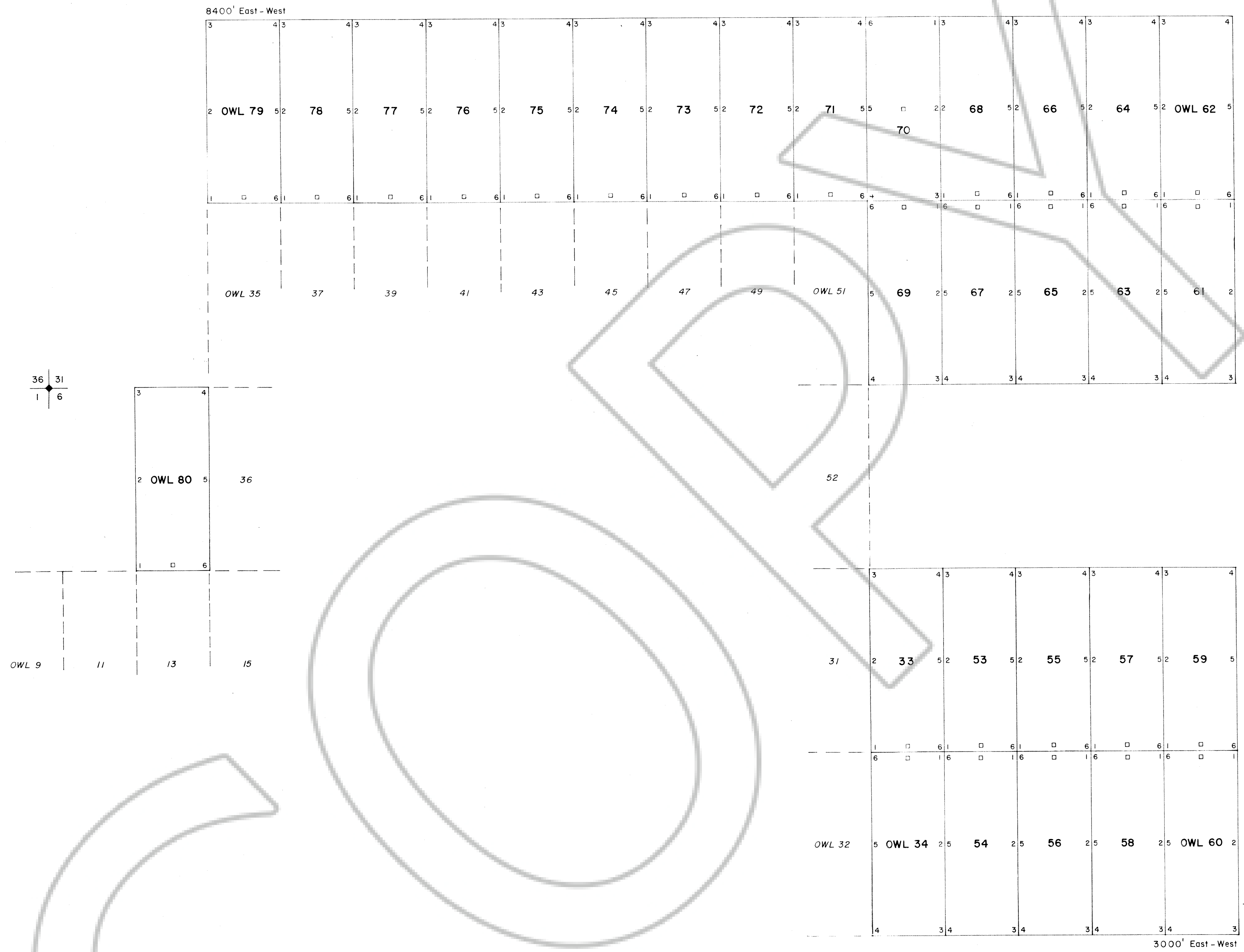


R. 58 E. R. 59 E.



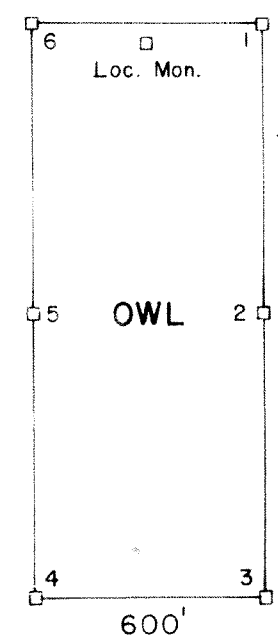
T. 3 S.

T. 4 S.



LOCATION DATES  
 OWL 33, 34, 53-60 DECEMBER 2, 1976  
 OWL 61-80 DECEMBER 3, 1976  
 TOTAL 30 LODE CLAIMS

LOCATOR  
 James R. Loverin  
 P.O. Box 548  
 Ely, Nevada 89301



All claim monuments are  
 4" x 4" x 5' wooden posts.  
 Corners numbered clockwise.

No. **59709**  
 FILED AND RECORDED AT REQUEST OF  
E. A. WINTER  
MAY 23, 1977  
 AT 46 MINUTES PAST 9 O'CLOCK  
 A.M. IN BOOK 20 OF OFFICIAL  
 RECORDS, PAGE 573 LINCOLN  
 COUNTY, NEVADA  
Domnick Behigler  
 COUNTY RECORDER

**MAP OF THE OWL LODE CLAIMS**  
**T.3S., R.59 E. SECTIONS 31,32 AND T.4S., R.59 E. SECTIONS 5, 6**  
**PAHRANAGAT MINING DISTRICT**  
**LINCOLN COUNTY, NEVADA**

SCALE	H: 1"=500'	CONTOUR INTERVAL:	REVISIONS
	V:	DATE:	BY:
SHEET	OF	DRAWING NO.:	FILE: