

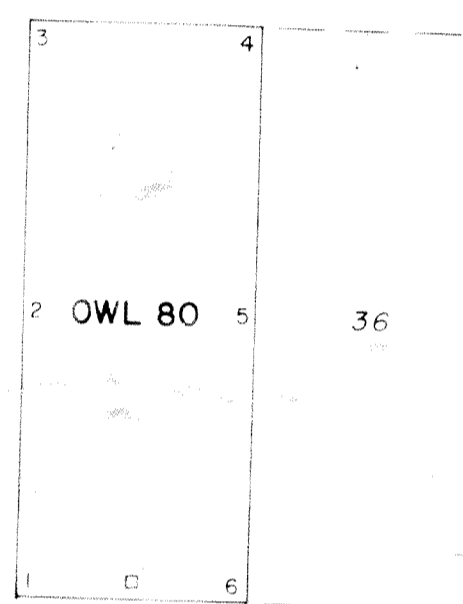
R. 58 E. R. 59 E.



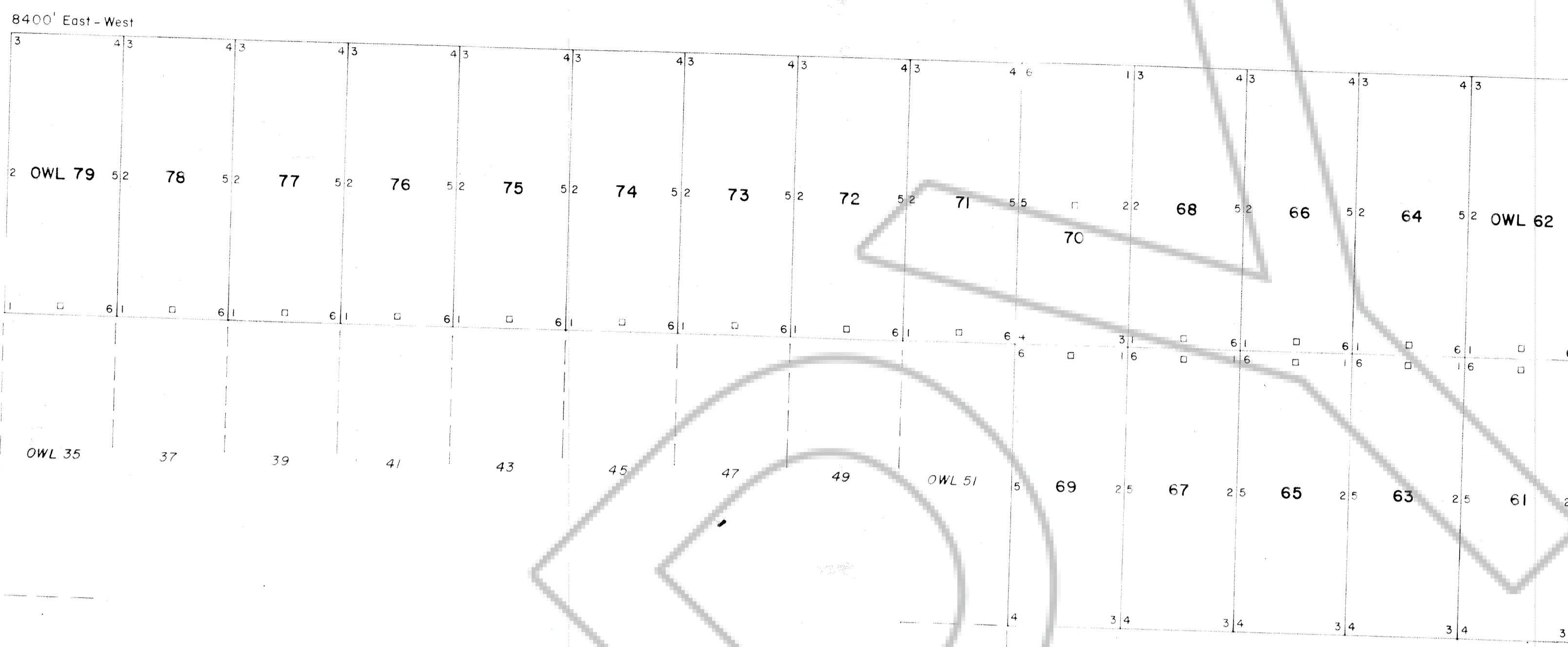
T. 3 S.

T. 4 S.

36 31  
1 6



OWL 9 11 13 15



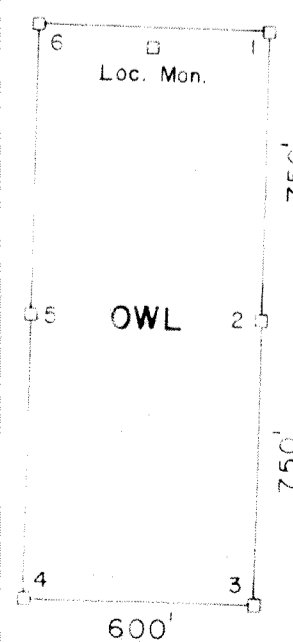
LOCATION DATES

OWL 33, 34, 53-60 DECEMBER 2, 1976  
OWL 61-80 DECEMBER 3, 1976

TOTAL 30 LODGE CLAIMS

LOCATOR

James R. Loverin  
P.O. Box 548  
Ely, Nevada 89301



All claim monuments are  
4" x 4" x 5" wooden posts.  
Corners numbered clockwise.

No. 59167  
FILED AND RECORDED AT REQUEST OF  
ELMER WINTER  
JAN 10 1977  
AT 1 MINUTES PAST 1 O'CLOCK  
P.M. IN BOOK 19 OF OFFICIAL  
RECORDS, PAGE 476 LINCOLN  
COUNTY, NEVADA.  
*Ernest Decker*  
COUNTY RECORDER

MAP OF THE OWL LODGE CLAIMS  
T. 3 S., R. 59 E. SECTIONS 31, 32 AND T. 4 S., R. 59 E. SECTIONS 5, 6  
PAHRANAGAT MINING DISTRICT  
LINCOLN COUNTY, NEVADA

SCALE: H. 1" = 500'	CONTOUR INTERVAL:	REVISIONS:
V:	DATE:	BY:
SHEET OF	DRAWING NO.:	FILE: