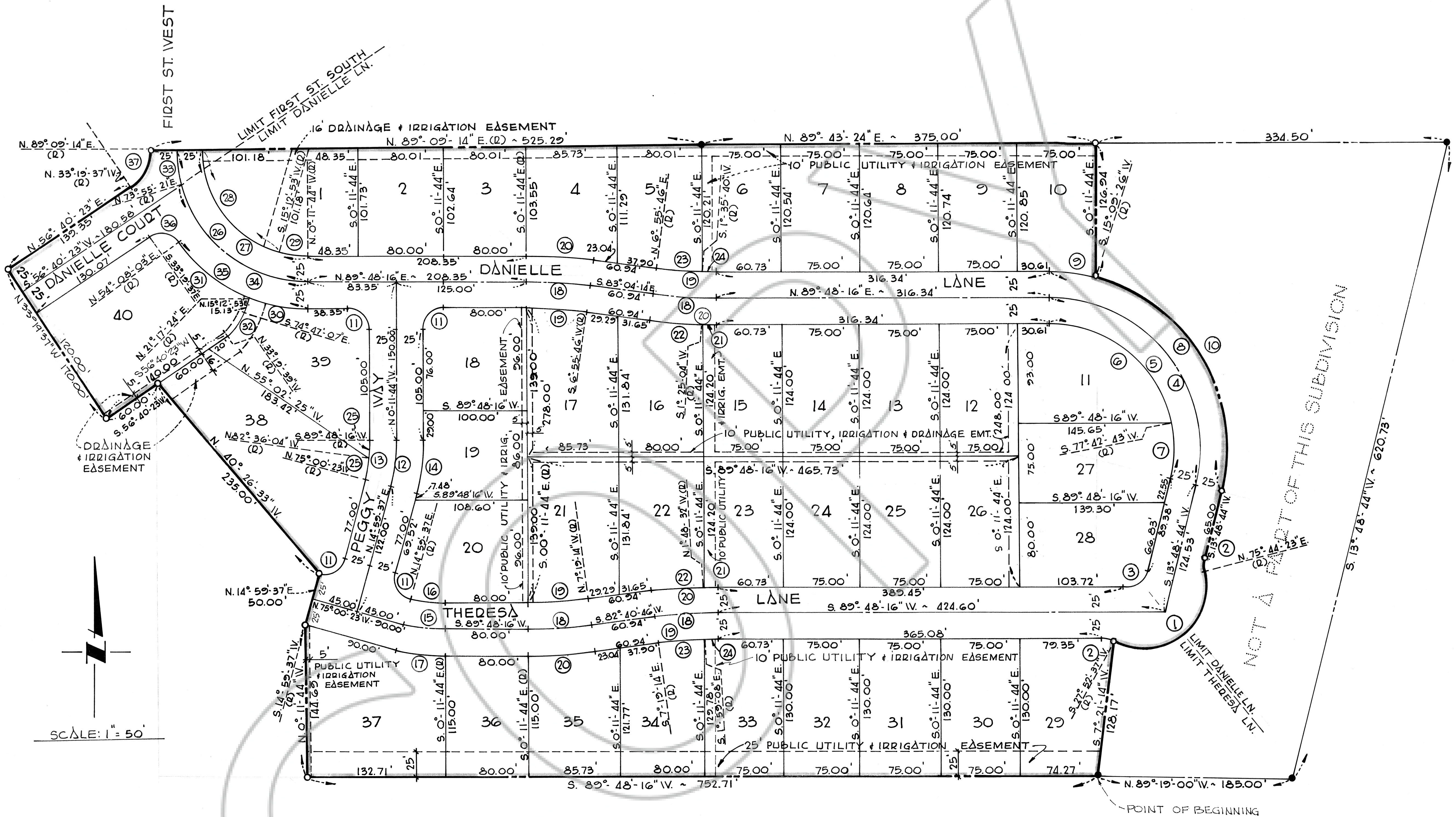






# ALAMO SOUTH SUBDIVISION, TRACT NUMBER 1 UNIT 1



### CURVE DATA

NO.	Δ	R.	L.	T.
1.	132° 08' 14"	60.00'	138.37'	135.28'
2.	28° 04' 21"	25.00'	12.25'	6.25'
3.	75° 59' 32"	20.00'	26.53'	15.62'
4.	104° 00' 28"	142.65'	258.94'	182.60'
5.	104° 00' 28"	117.65'	213.56'	150.60'
6.	77° 54' 27"	117.65'	152.97'	95.11'
7.	26° 06' 01"	117.65'	53.59'	27.27'
8.	104° 00' 28"	167.65'	304.32'	214.61'
9.	15° 21' 10"	167.65'	44.92'	22.60'
10.	88° 39' 18"	167.65'	259.40'	163.76'
11.	90° 00' 00"	20.00'	31.42'	20.00'
12.	15° 11' 21"	165.00'	43.74'	22.00'

NO.	Δ	R.	L.	T.
13.	15° 11' 21"	140.00'	37.11'	18.67'
14.	15° 11' 21"	190.00'	50.37'	25.33'
15.	15° 11' 21"	150.00'	39.77'	20.00'
16.	15° 11' 21"	125.00'	33.14'	16.67'
17.	15° 11' 21"	175.00'	46.39'	23.33'
18.	07° 07' 30"	481.87'	59.92'	30.00'
19.	07° 07' 30"	456.87'	56.81'	28.44'
20.	07° 07' 30"	506.87'	63.03'	31.56'
21.	01° 36' 48"	506.87'	14.27'	7.14'
22.	01° 36' 48"	506.87'	48.76'	24.40'
23.	05° 20' 06"	456.87'	42.54'	21.29'
24.	01° 47' 24"	456.87'	14.27'	7.14'

NO.	Δ	R.	L.	T.
25.	07° 35' 40"	140.00'	18.56'	9.29'
26.	89° 20' 58"	126.18'	196.77'	124.76'
27.	89° 20' 58"	101.18'	157.79'	100.04'
28.	73° 56' 21"	101.18'	130.57'	76.16'
29.	15° 24' 37"	101.18'	27.21'	13.69'
30.	21° 29' 08"	151.18'	56.69'	28.68'
31.	32° 50' 39"	151.18'	86.66'	44.56'
32.	41° 27' 30"	40.00'	28.94'	15.14'
33.	15° 13' 53"	126.18'	33.54'	16.87'
34.	74° 07' 05"	126.18'	163.23'	95.29'
35.	54° 19' 47"	151.18'	143.36'	77.58'
36.	87° 27' 40"	20.00'	30.53'	19.13'
37.	57° 31' 09"	40.53'	40.69'	22.25'

### LEGEND

- FOUND STEEL PIN WITH "R.L.S.#2379" CAP
- SET STEEL PIN WITH "R.L.S.#1118" CAP

NOT A PART OF THIS SUBDIVISION