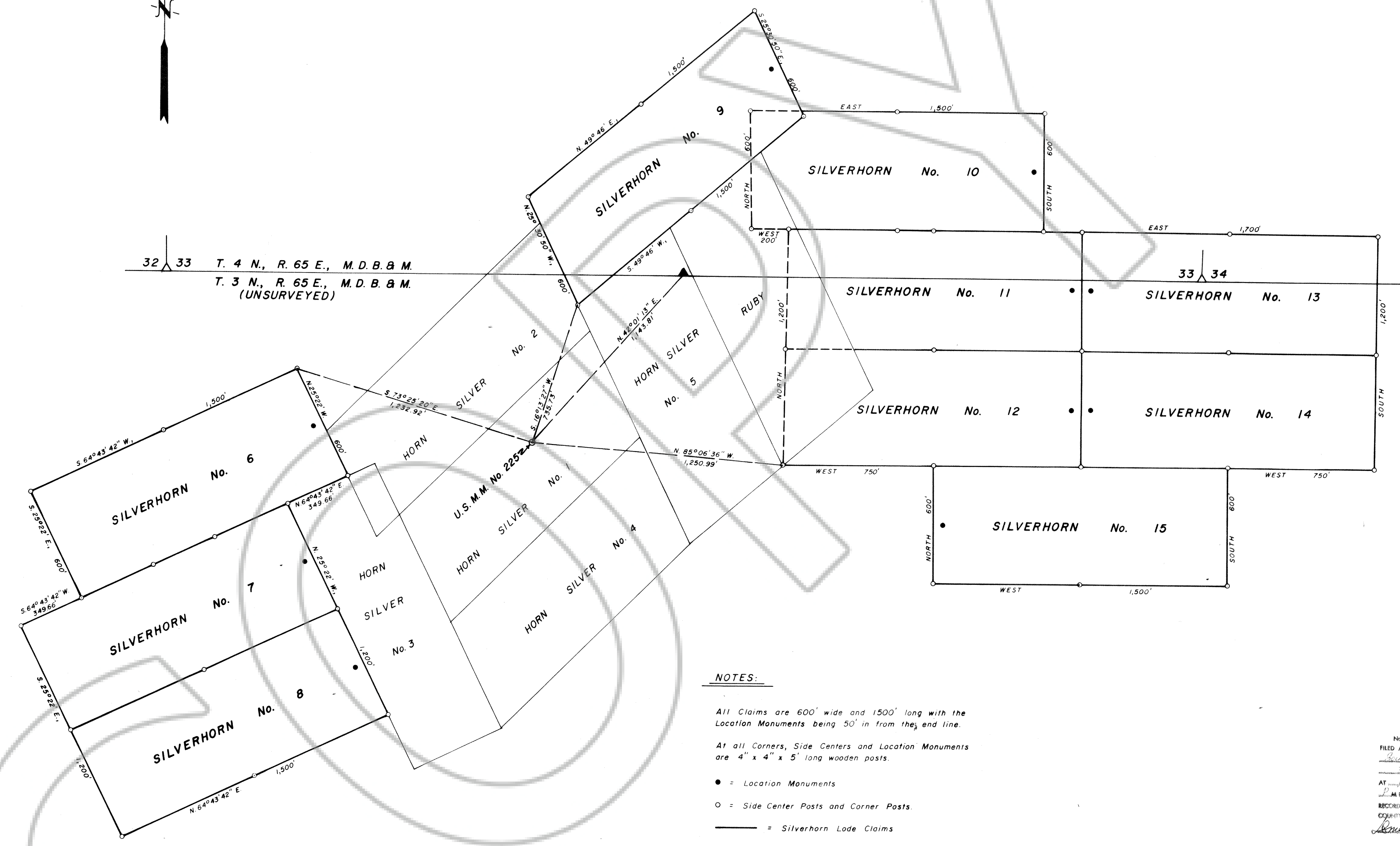




32 | 33 T. 4 N., R. 65 E., M.D.B. & M.  
 T. 3 N., R. 65 E., M.D.B. & M.  
 (UNSURVEYED)

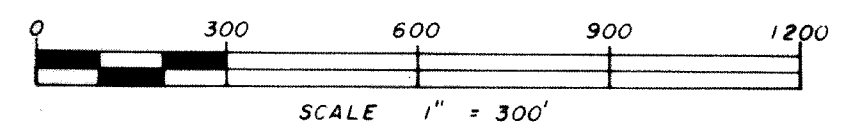


**NOTES:**

All Claims are 600' wide and 1500' long with the Location Monuments being 50' in from the end line.  
 At all Corners, Side Centers and Location Monuments are 4" x 4" x 5' long wooden posts.  
 • = Location Monuments  
 ○ = Side Center Posts and Corner Posts.  
 — = Silverhorn Lode Claims  
 — = Patented Claims under Mineral Survey No. 3727.  
 These Claims are located by B F Minerals Corporation and Harter & Company, 900 Empire Life Bldg., Dallas, Texas 75201.

Silverhorn Nos. 6, 7, 8, 9 & 14 located on August 12, 1976.  
 Silverhorn Nos. 11 & 13 located on August 11, 1976.  
 Silverhorn Nos. 10, 12 & 15 located on August 10, 1976.

No. 58558  
 FILED AND RECORDED AT REQUEST OF  
 BOUNDY & FORMAN, INC.  
 SEP. 8 1976  
 AT 11 MINUTES PAST 1 O'CLOCK  
 P.M. IN BOOK 18 OF OFFICIAL  
 RECORDS, PAGE 243 LINCOLN  
 COUNTY, NEVADA.  
*James H. ...*  
 COUNTY RECORDER



MAP SHOWING THE  
 SILVERHORN LODE CLAIMS NOS. 6-15  
 LOCATED BY  
**B F MINERALS CORPORATION  
 AND HARTER & COMPANY**  
 IN THE  
 BRISTOL MINING DISTRICT  
 LINCOLN COUNTY, NEVADA

SURVEYED & MAPPED  
 BY  
**BOUNDY & FORMAN, INC.**  
 ELY, NEVADA  
 AUGUST, 1976