

R. 58 E. R. 59 E.

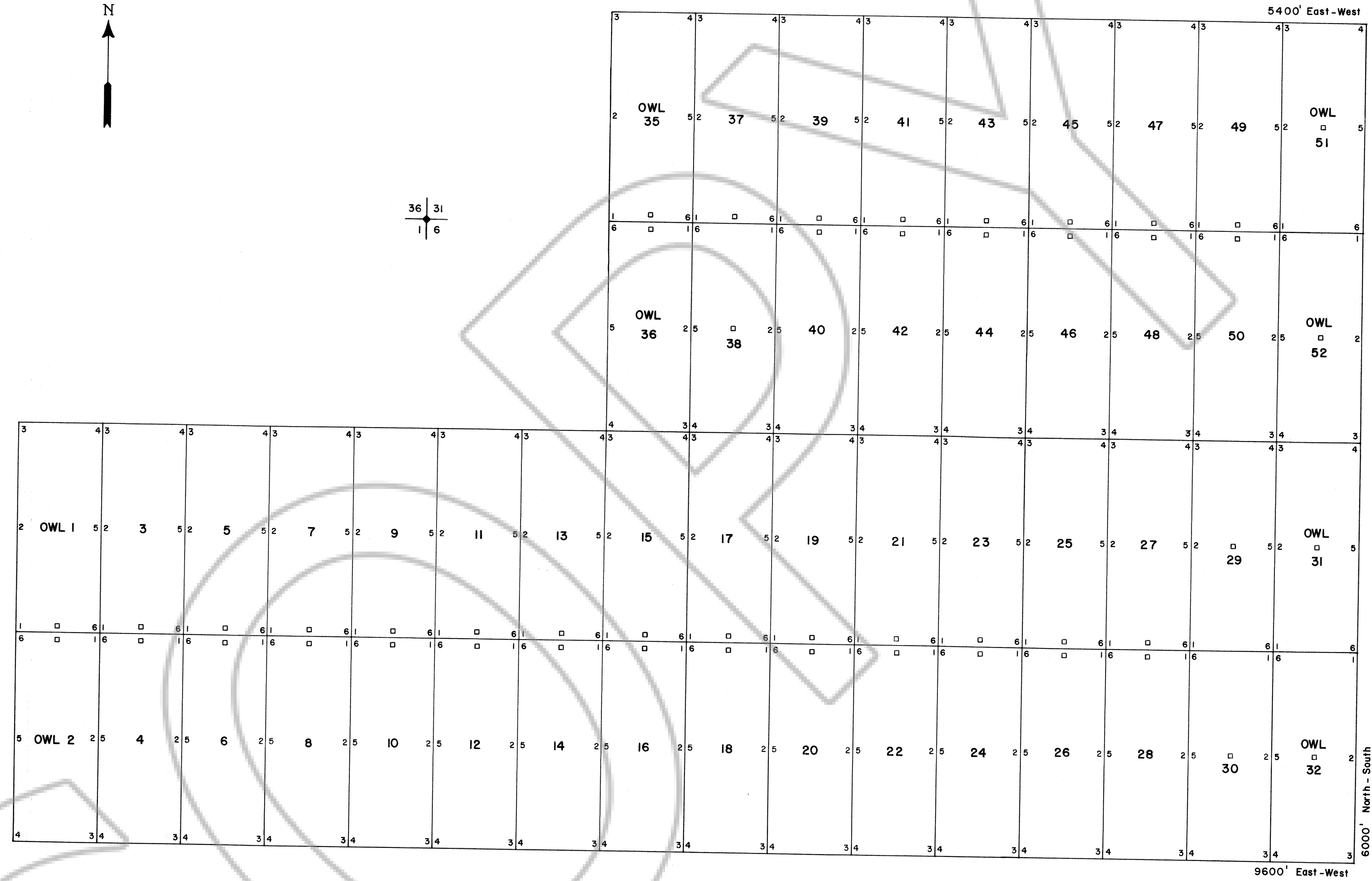
T. 3 S.

35 | 36
2 | 1 Found

T. 4 S.

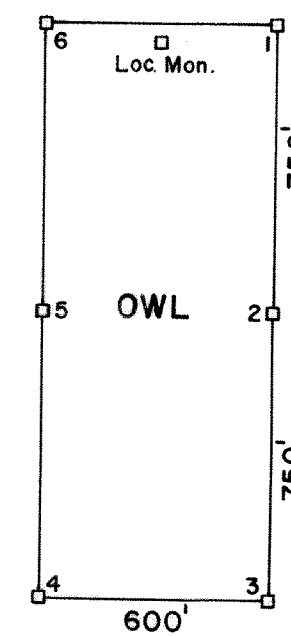


36 | 31
1 | 6



LOCATION DATES
 OWL 1 - 20 MAY 24, 1976
 OWL 21 - 28 MAY 25, 1976
 OWL 29 - 32, 35 - 42 MAY 26, 1976
 OWL 43 - 52 MAY 27, 1976
 TOTAL 50 LODE CLAIMS

LOCATOR
 Jim Loverin
 P.O. Box 548
 Ely, Nevada 89301



All claim monuments are 4"x4"x5" wooden posts. Corners are numbered clockwise.

No. 88283
 FILED AND RECORDED AT REQUEST OF
 JAMES H. LOVERIN
 JUN 1976
 AT 5 MINUTES PAST 10 O'CLOCK
 AM IN BOOK 17 OF OFFICIAL
 RECORDS PAGE 265 LINCOLN
 COUNTY, NEVADA
Amel DeLima
 COUNTY CLERK

MAP OF THE OWL LODE CLAIMS
 SECTIONS 31, 32, T. 3 S., R. 59 E., SECTION 1, T. 4 S., R. 58 E. &
 SECTIONS 5, 6, T. 4 S., R. 59 E.
 PAHRANAGAT MINING DISTRICT
 LINCOLN COUNTY, NEVADA

SCALE	H: 1" = 500'	CONTOUR INTERVAL:	REVISIONS
	V:	DATE:	BY:
SHEET	OF	DRAWING NO:	FILE: