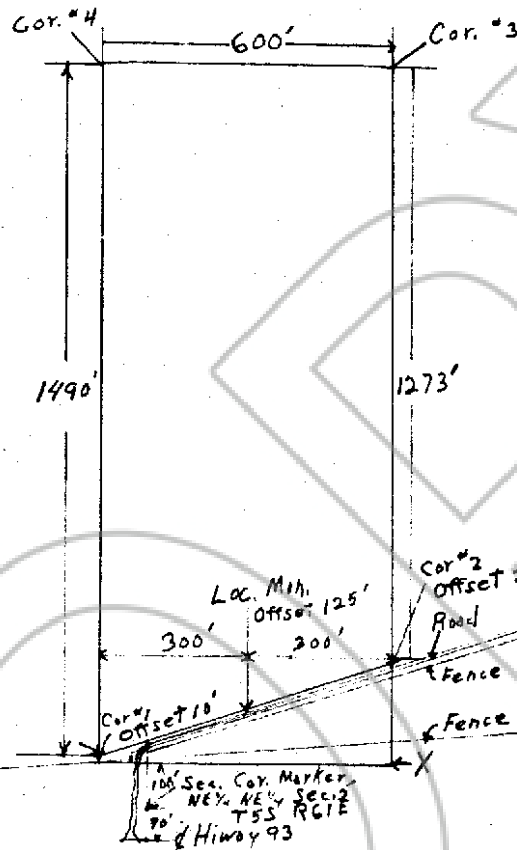


Map: Gloria Mining Claim
Unknown Mining District, Lincoln County Nevada
D.E. Johnson, Locater
Date Located Sept. 15, 1975



Scale: 1" = 300'

With the road and the fences the way they are it seemed better just to knock that much off the end of the claim rather than get into a hassle about it, besides, the projected corner at 'X' came too close to the telephone line.

D.E. Johnson
P.O. Box #33 Caliente Nev

No. 57325
 FILED AND RECORDED AT REQUEST OF
D. E. Johnson
 Oct. 8, 1975
 AT 20 MINUTES PAST 10 O'CLOCK
 P. M. IN BOOK 15 OF OFFICIAL
 RECORDS, PAGE 481 LINCOLN
 COUNTY, NEVADA

[Signature]
 COUNTY RECORDER