

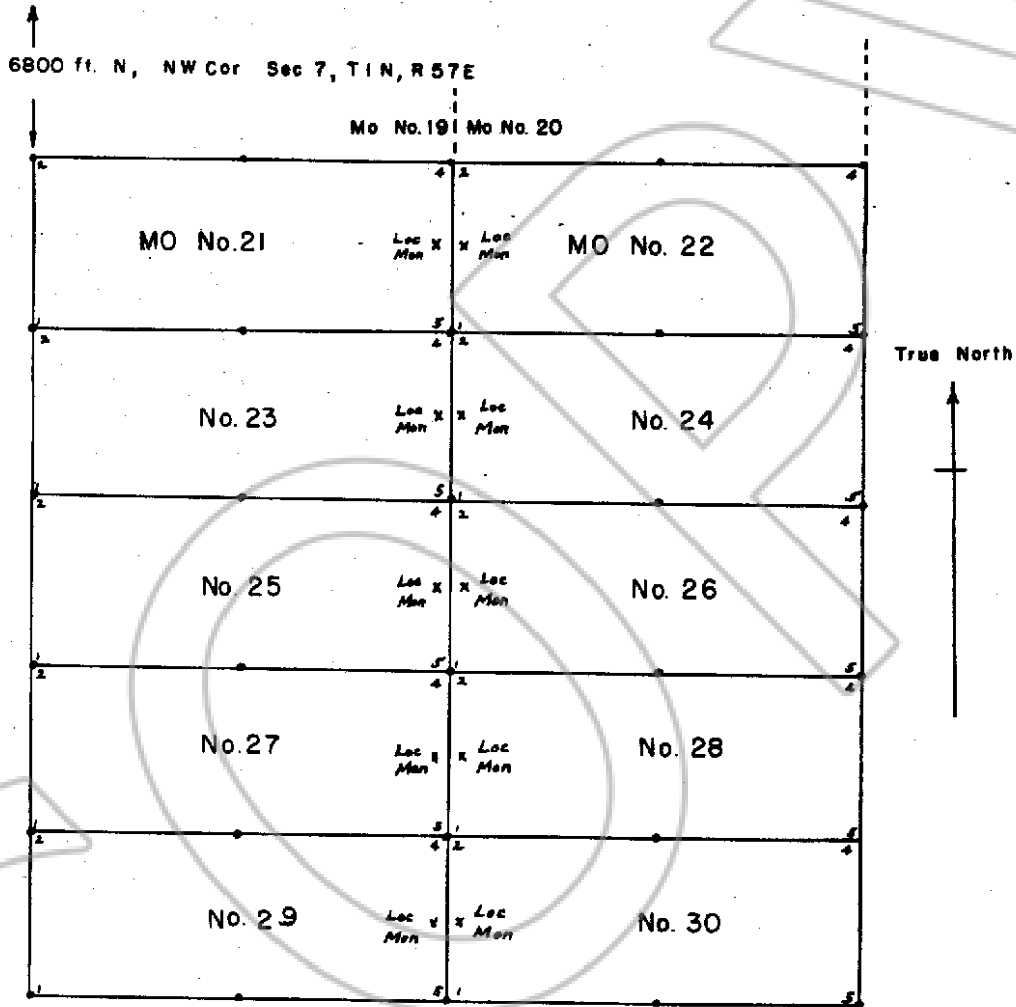
Lincoln County

MAP OF THE MO No 21 thru 30 GROUP OF LODE CLAIMS

FREIBERG MINING DISTRICT, LINCOLN COUNTY, NEVADA

Located July 1, 1974

By Ed Hager, PO Box 6, Winnemucca, Nevada, 89445



Scale 1 in = 500 ft.

• All Corner Posts and Location Monuments are 4" X 4" wooden posts.

No. 55122
FILED AND RECORDED AT REQUEST OF
Ed Hager
SEP 25 1974
AT 1 MINUTES PAST 1 O'CLOCK
2 M IN BOOK 11 OF OFFICIAL
RECORDS, PAGE 424 LINCOLN
COUNTY, NEVADA.
Frank H. [Signature]
COUNTY RECORDER

BOOK 11 PAGE 424