

CORNER RECORD

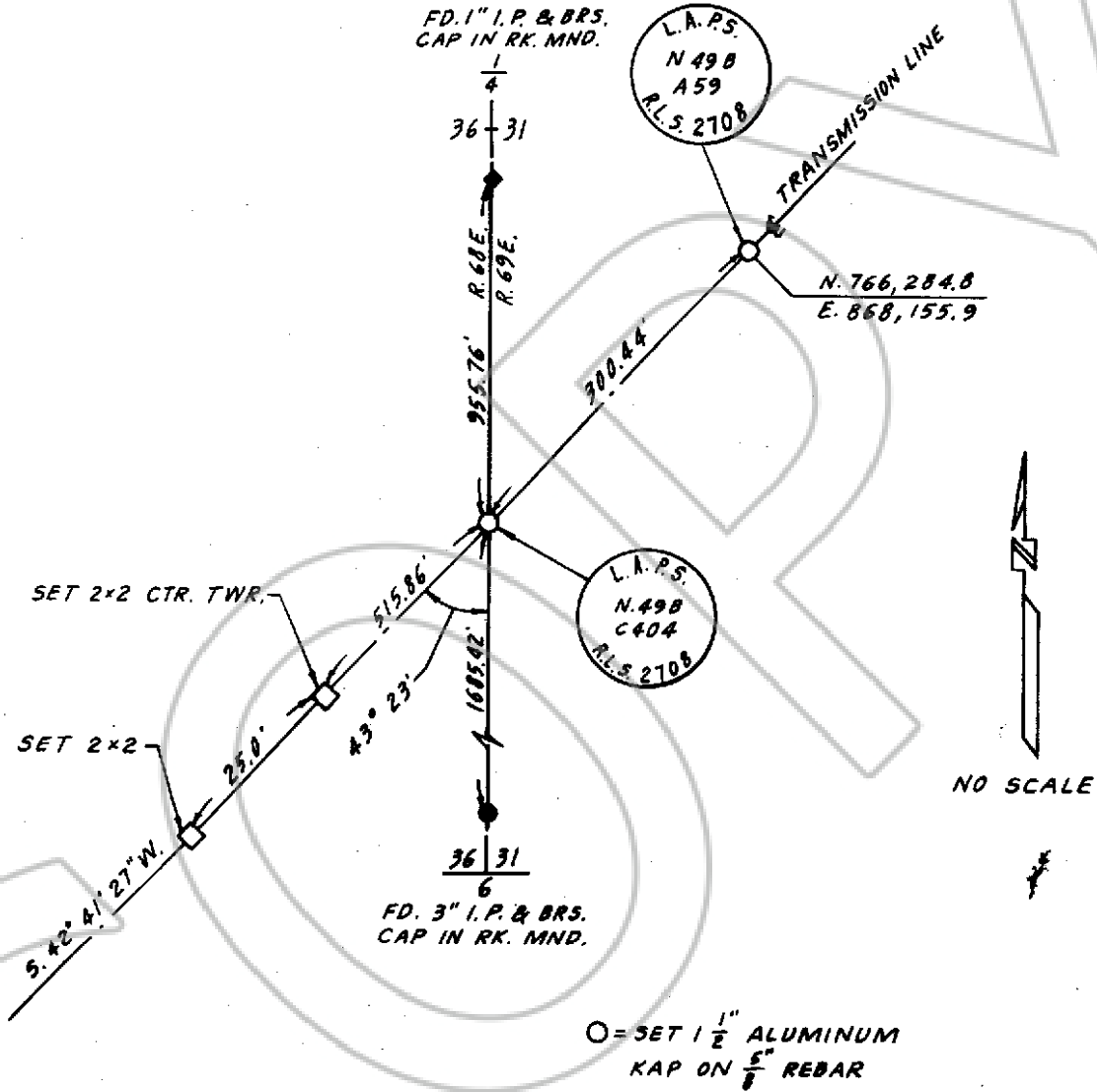
Filed as required by Statutes of Nevada, 1969, Chapter 366.

Sheet 1 of 2 sheets.

Sec. 36 Twp. 12 S. Range 68 E., Mt. Diablo PM.

County of LINCOLN State of Nevada.

See other side of sheet for instructions.



SURVEYOR'S CERTIFICATE.

I, ROBERT L. CARPENTER Registered Land Surveyor No. 2708 in the State of Nevada do hereby certify that the foregoing is a true, complete and accurate representation of the monument, or monuments, recovered, rehabilitated, restored, re-established or otherwise effected and mentioned in the foregoing Corner Record.

Date survey was completed MARCH 1974

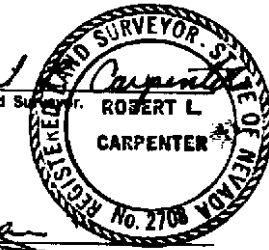
Date Corner Record filed

54335

Robert L. Carpenter Registered Land Surveyor No. 2708

Accepted for filing on this 16TH day of MAY 1974 in the office of the County Recorder LINCOLN County, State of Nevada.

County Recorder



CORNER RECORD

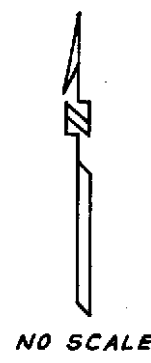
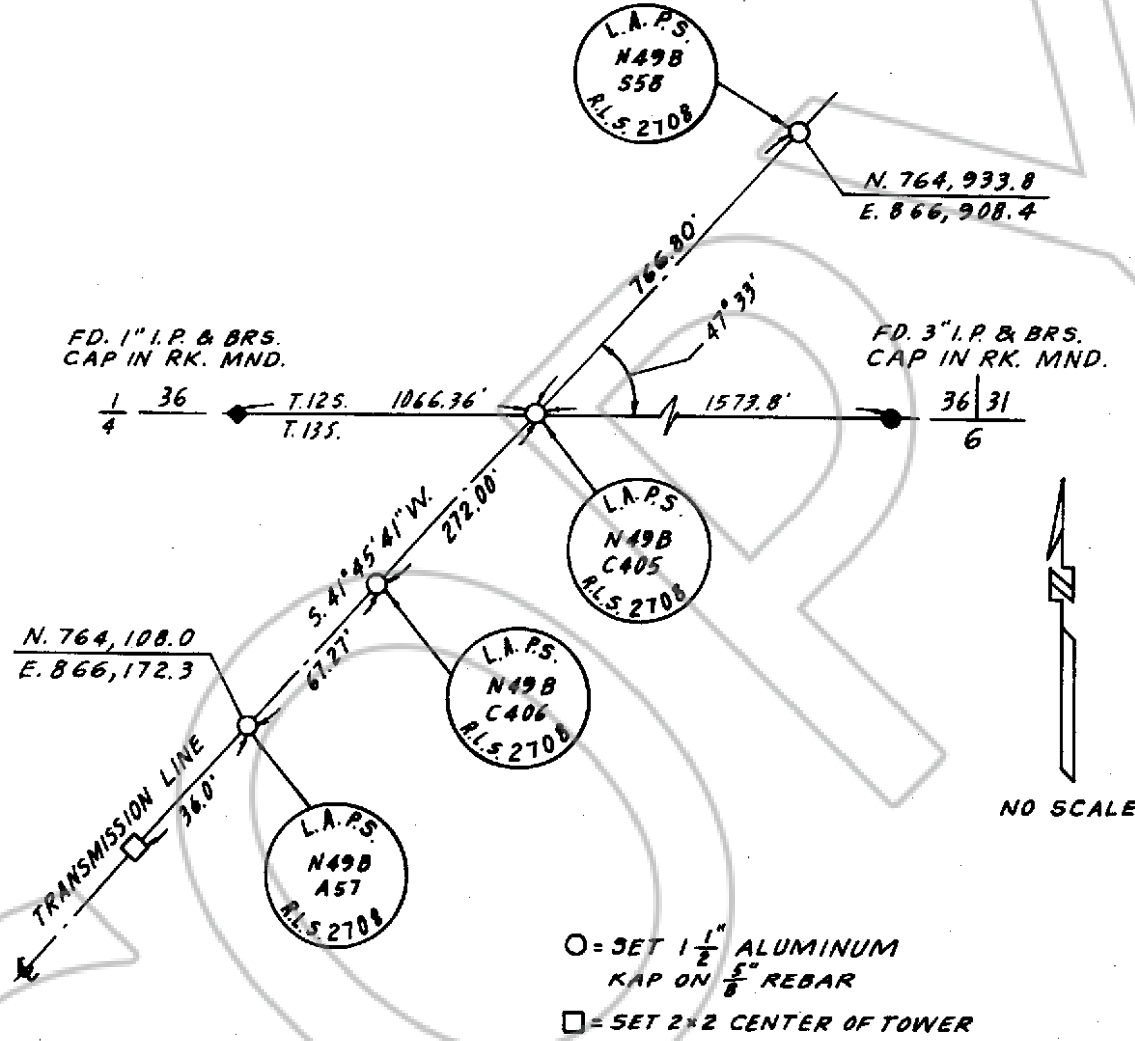
Filed as required by Statutes of Nevada, 1969, Chapter 366.

Sheet 2 of 2 sheets.

Sec. 36 Twp. 12 S. Range. 68 E. Mt. Diablo PM.

County of LINCOLN State of Nevada.

See other side of sheet for instructions.



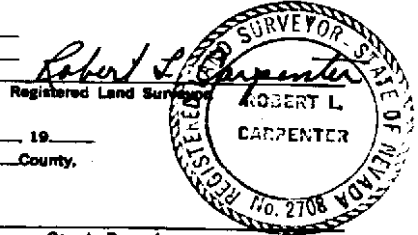
○ = SET 1 1/2" ALUMINUM KAP ON 5/8" REBAR  
 □ = SET 2x2 CENTER OF TOWER

SURVEYOR'S CERTIFICATE.

I, ROBERT L. CARPENTER Registered Land Surveyor No. 2708 in the State of Nevada do hereby certify that the foregoing is a true, complete and accurate representation of the monument, or monuments, recovered, rehabilitated, restored, re-established or otherwise effected and mentioned in the foregoing Corner Record.

Date survey was completed MARCH 1974  
 Date Corner Record filed \_\_\_\_\_

Accepted for filing on this 502 page 1 day of \_\_\_\_\_ 19\_\_\_\_  
 in the office of the County Recorder \_\_\_\_\_ County, State of Nevada.



County Recorder \_\_\_\_\_  
 By \_\_\_\_\_