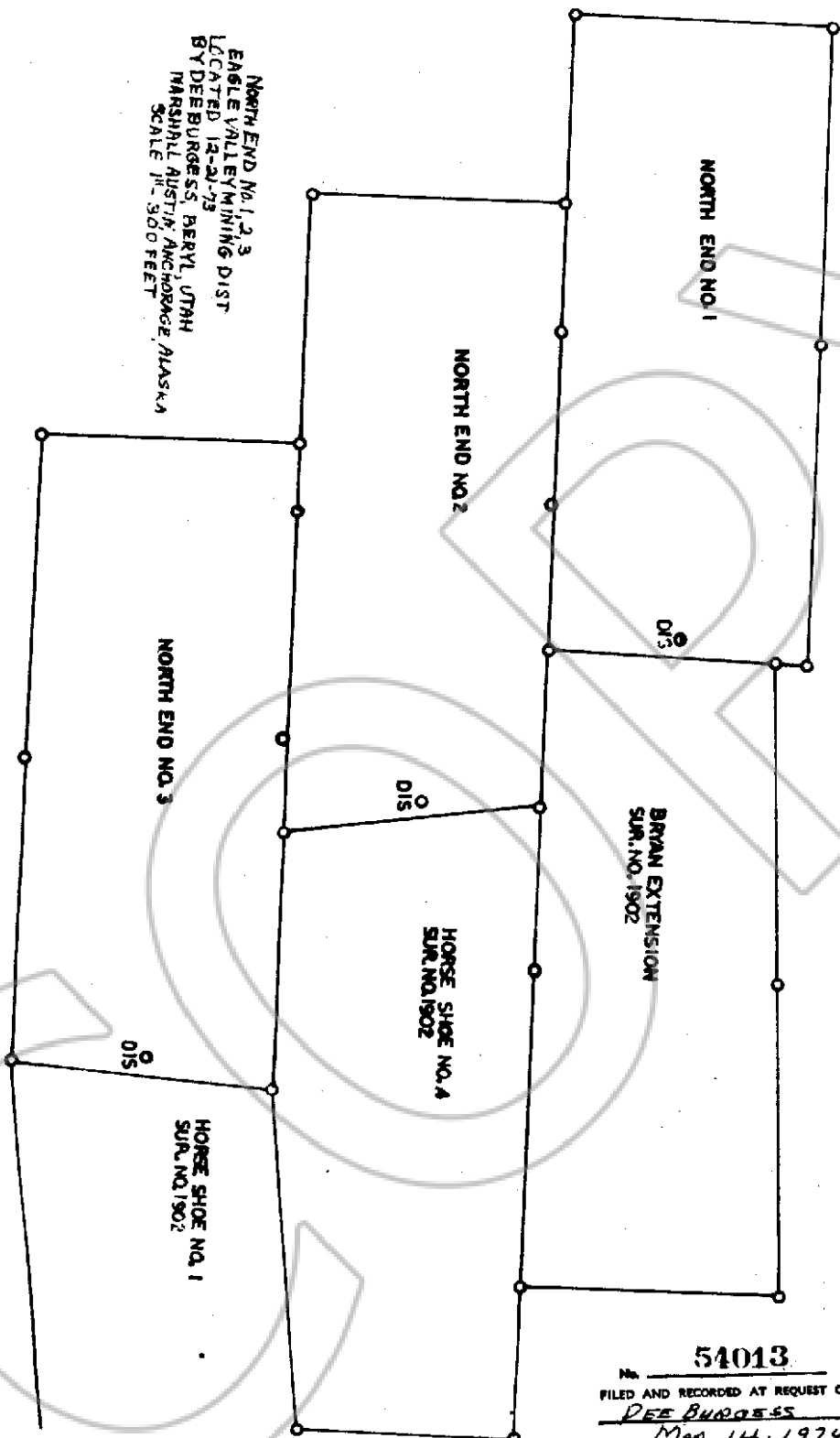


NORTH END NO. 1, 2, 3
EAGLE VALLEY MINING DIST
LOCATED 12-21-73
BY DEE BURGESS, BERYL, UTAH
MARSHALL AUSTIN, ANCHORAGE, ALASKA
SCALE 1" = 300 FEET



54013

FILED AND RECORDED AT REQUEST OF

DEE BURGESS

MAR. 14. 1974

AT 40 MINUTES PAST 2 O'CLOCK

LINCOLN COUNTY, NEVADA, RECORDS.

[Signature]
COUNTY RECORDER