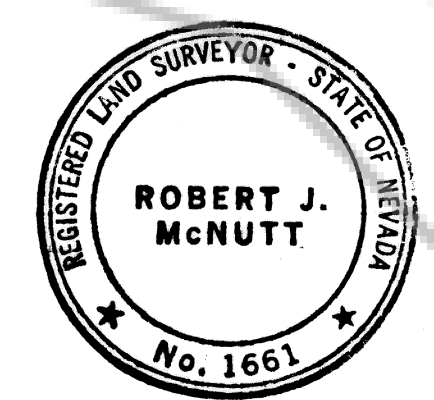


CERTIFICATE

I, ROBERT J. McNUTT, PROFESSIONAL ENGINEER AND REGISTERED LAND SURVEYOR, DO HEREBY CERTIFY THAT THIS MAP IS A TRUE AND ACCURATE REPRESENTATION OF THE LANDS SHOWN HEREON AND SURVEYED UNDER MY SUPERVISION ON THE 23RD DAY OF AUGUST, 1973, AT THE INSTANCE OF ELGIE A. THOMPSON, THAT ALL POINTS FOUND OR SET ARE CORRECTLY DESIGNATED HEREON, AND THAT THIS MAP DOES NOT CONSTITUTE A SUBDIVISION AS DEFINED BY NEVADA STATE LAW.



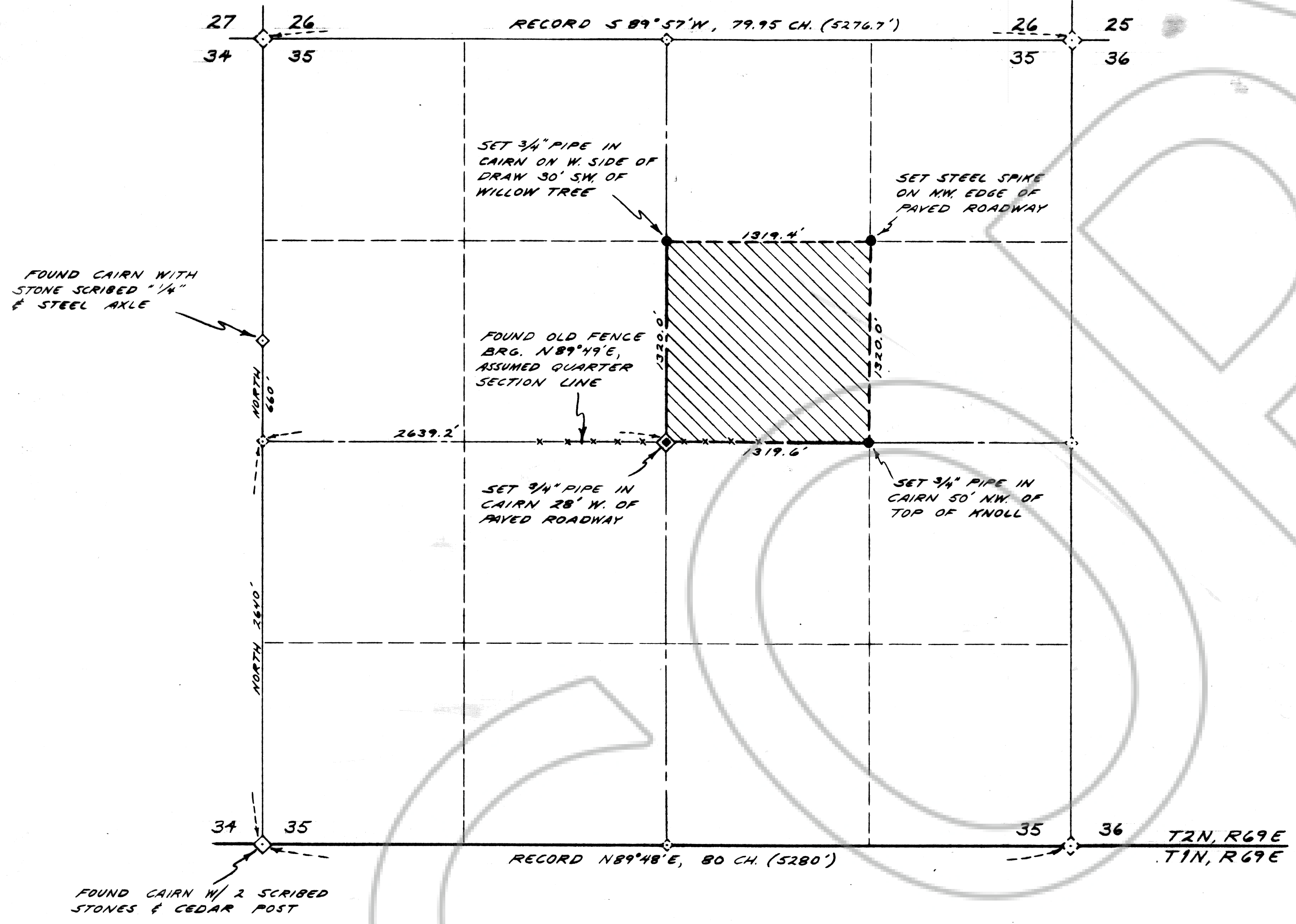
*Robert J. McNutt*  
 ROBERT J. McNUTT  
 REGISTERED LAND SURVEYOR #1661

LEGAL DESCRIPTION

THE SOUTHWEST QUARTER (SW 1/4) OF THE NORTHEAST QUARTER (NE 1/4) OF SECTION 35, TOWNSHIP 2 NORTH, RANGE 69 EAST, MOUNT DIABLO MERIDIAN

BASIS OF BEARINGS

THE SOUTH LINE OF T2N, R69E, M.D.M., AS SHOWN ON THE OFFICIAL PLAT THEREOF DATED DECEMBER 30, 1872, ON FILE IN THE OFFICE OF THE BUREAU OF LAND MANAGEMENT, RENO, NEVADA.



LEGEND

- CORNER FOUND      ◊
- CORNER SET        ◊ ●
- CORNER NOT FOUND ◊ ×

No. \_\_\_\_\_  
 FILED AT THE REQUEST  
 OF Mrs. ELGIE A. THOMPSON  
 ON THIS 19<sup>TH</sup> DAY  
 OF SEPT., 1973, AT  
 1:40 P.M., IN FILE  
 NO. 247-A, PAGE 122,  
 OFFICIAL RECORDS OF  
 LINCOLN Co., NEVADA  
*Recorder*  
 RECORDER

MAP FOR RECORD OF SURVEY  
 OF A PORTION OF SEC. 35,  
 T2N, R69E, M.D.B. & M.  
 LINCOLN COUNTY, NEVADA  
 FOR  
 ELGIE A. THOMPSON