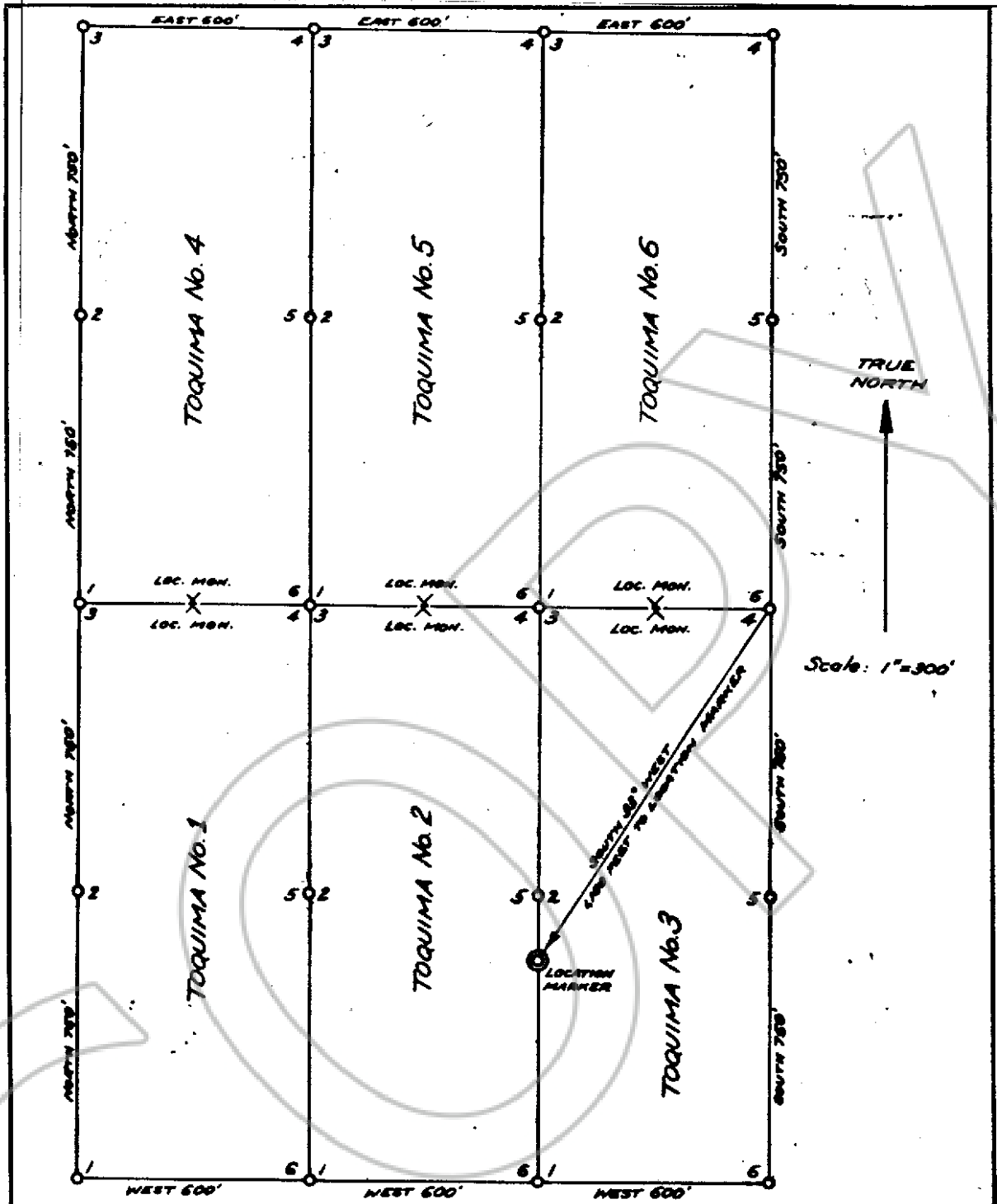


Lincoln County



MAP OF THE TOQUIMA LODE CLAIM GROUP
 IN UNSURVEYED SECTIONS 8 AND 9, T7S-R6SE
 UNKNOWN MINING DISTRICT, LINCOLN CO, NEVADA
 LOCATED MAY 13, 1973
 BY TOQUIMA CORPORATION
 2265 EAST 4800 SOUTH, SALT LAKE CITY, UTAH 84147

NOTE: THE LOCATION MARKER APPEARING ON THIS MAP IS A 3 INCH STEEL PIPE SET ON A TOPOGRAPHIC HIGH DESIGNATED 7704 ON THE 1969 EDITION OF THE ELGIN SW TOPOGRAPHIC QUADRANGLE PUBLISHED BY THE U.S. GEOLOGICAL SURVEY. IT LIES IN THE WEST HALF OF UNSURVEYED SECTION 9, TOWNSHIP 7 SOUTH, RANGE 65 EAST.

No. ~~50007~~
 FILED AND RECORDED AT REQUEST OF
Toquima Corporation
 June 5, 1973
 AT 1 MINUTES PART 1 OF BOOK
P.M IN BOOK 7 OF OFFICIAL
 RECORDS, PAGE 466 LINCOLN
 COUNTY, NEVADA
Ernest R. Bell
 COUNTY RECORDER
 BOOK **7** PAGE **466**