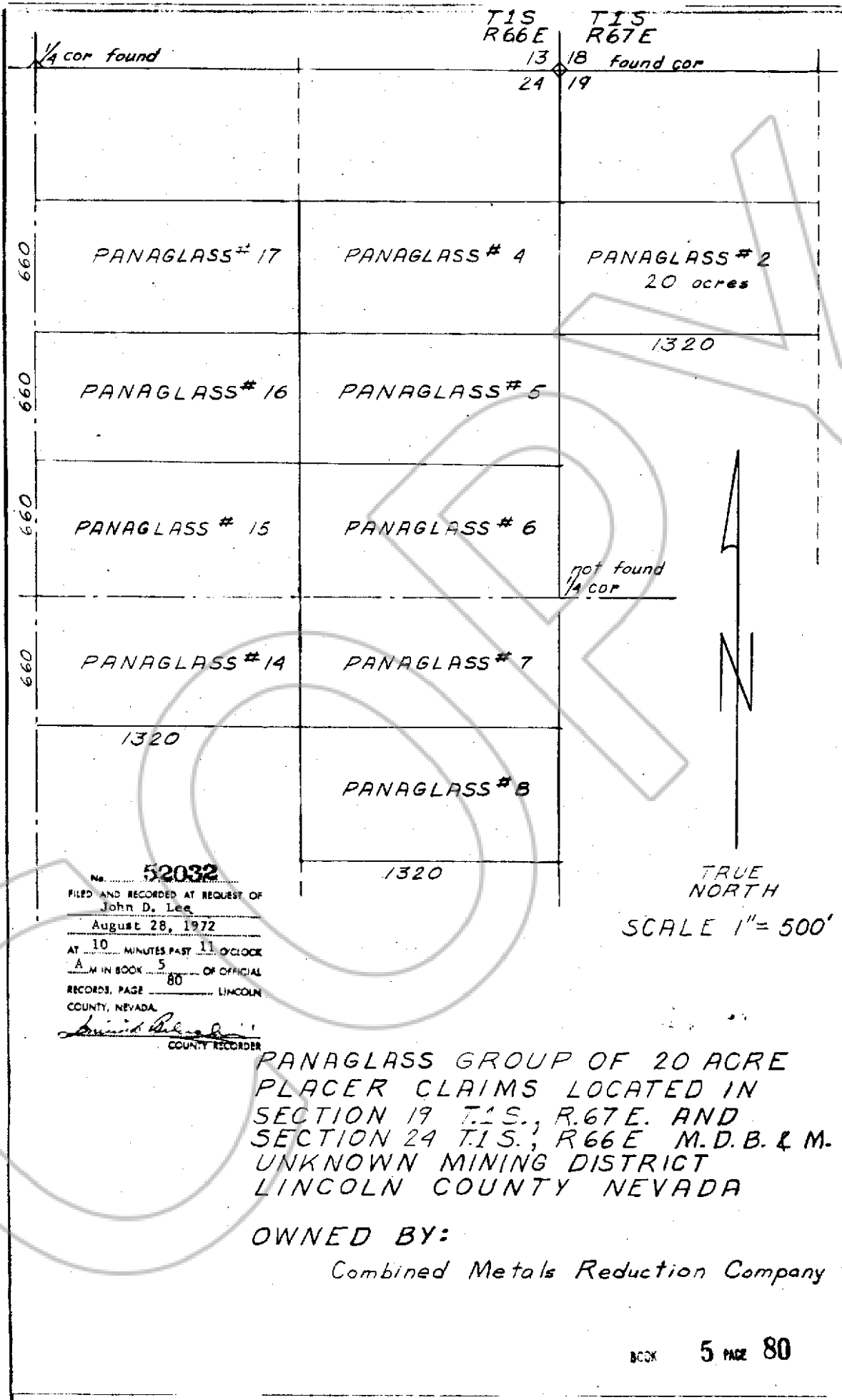


Lincoln County



No. **52032**
 FILED AND RECORDED AT REQUEST OF
 John D. Lee
 August 28, 1972
 AT 10 MINUTES PAST 11 O'CLOCK
 A.M. IN BOOK 5 OF OFFICIAL
 RECORDS, PAGE 80 LINCOLN
 COUNTY, NEVADA
David Be...
 COUNTY RECORDER

TRUE
 NORTH
 SCALE 1" = 500'

PANAGLASS GROUP OF 20 ACRE
 PLACER CLAIMS LOCATED IN
 SECTION 19 T.15., R.67E. AND
 SECTION 24 T.15., R.66E M.D.B. & M.
 UNKNOWN MINING DISTRICT
 LINCOLN COUNTY NEVADA

OWNED BY:
 Combined Metals Reduction Company