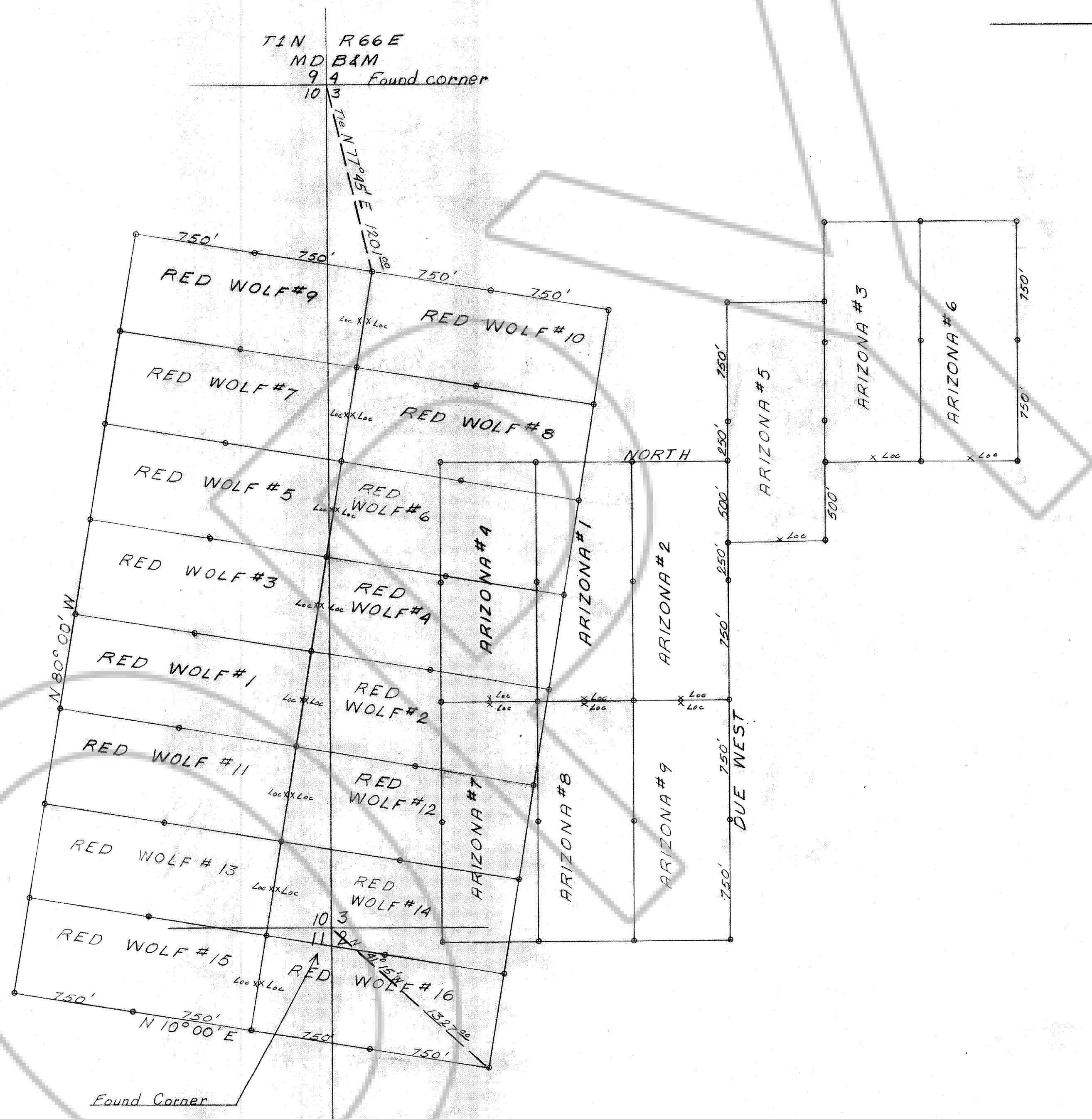
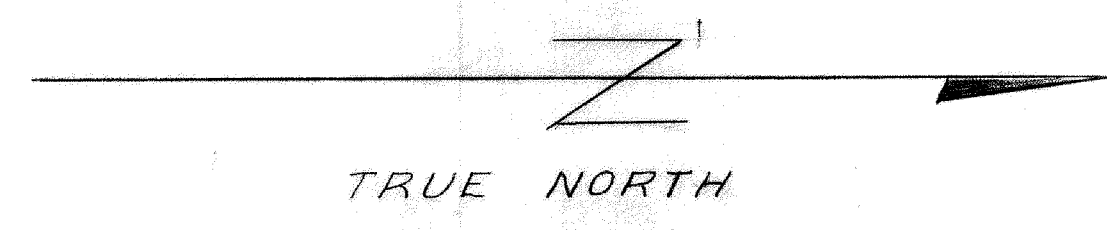


T1N R66E
 MD B&M
 9 4 Found corner
 10 3



ARIZONA AND RED WOLF GROUP OF CLAIMS
 LOCATED IN SECTIONS 2, 3, 10 & 11 T1N R66E,
 MDB&M LINCOLN COUNTY NEVADA UNKNOWN
 MINING DISTRICT

OWNED AND LOCATED BY: Gary M. Lee Proche Nev
 John D. Lee Proche Nev
 51990

SCALE 1" = 500'

JOHN D. LEE
 AUG 23, 1972
 45
 5
 25