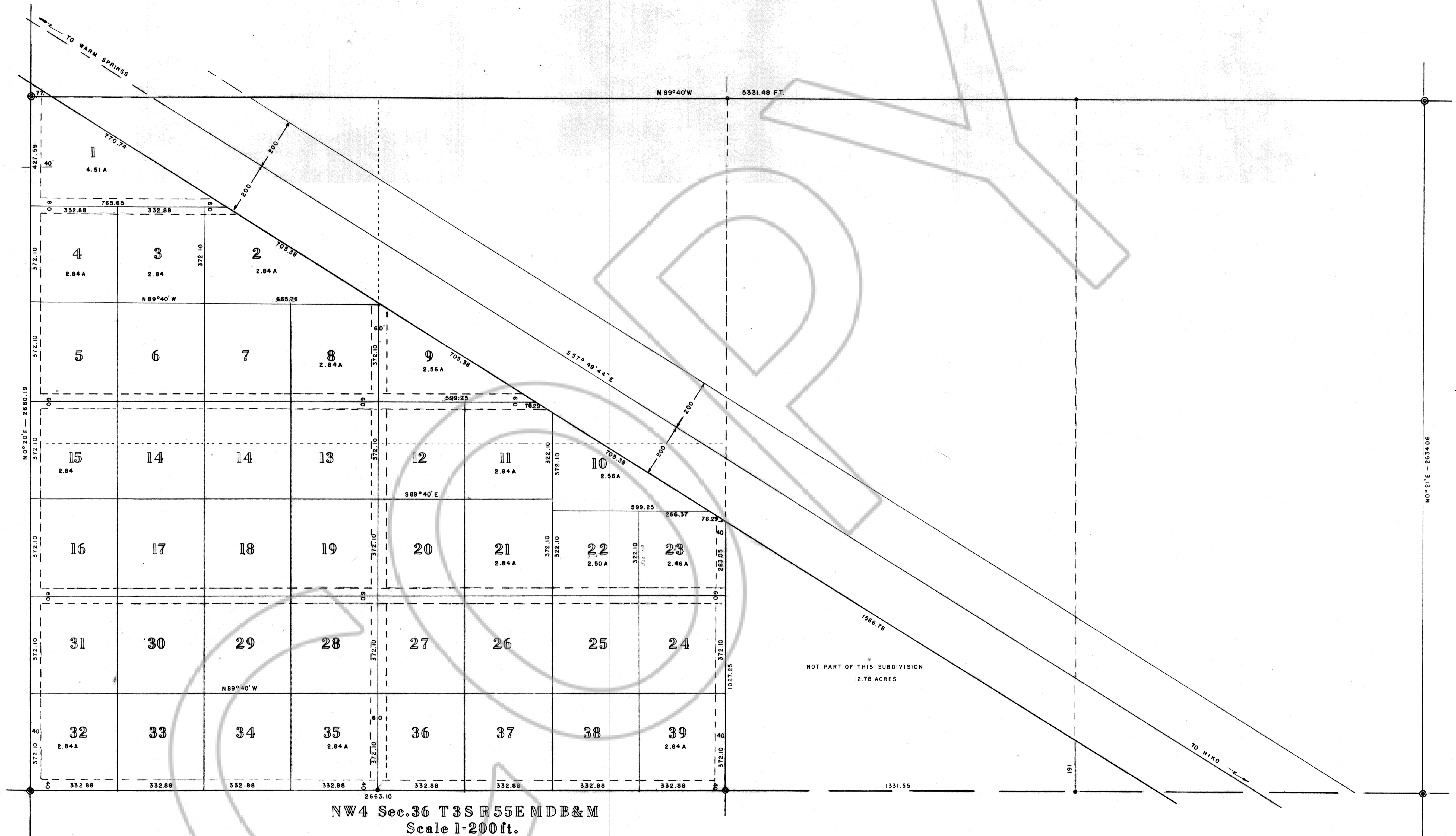


THIS IS NOT A SUBDIVISION



NW4 Sec. 36 T3S R55E MDB&M
Scale 1-200ft.

NOTE

Basis of bearings centerline of Highway
Corners found Brass Caps
Corners set 1/2" reinforce steel & tag

CERTIFICATE

I, J.V. Caselli R.L.S. 451. Do hereby certify that this map is a true and accurate representation of the lands surveyed under my supervision on Oct. 20, 1970 to Oct 22, 1970 at the request and authorization of D.C. Day, all monuments are of character and occupy the positions indicated and will be sufficient to enable the survey to be retraced. This survey is not a subdivision as defined in Nevada revised statutes, chapter 278, 10 will.

(1) Each and every parcel contains less than 5 acres
(2) The land surveyed abuts upon a dedicated street or highway

J.V. Caselli
R.L.S. No. 451

D.C. Day

STATE OF NEVADA } ss
COUNTY OF LINCOLN }

On 7 December 1970, personally appeared before me, a notary public, D.C. Day, who acknowledged to me that he executed the above instrument.

Barbara S. Mathews
NOTARY PUBLIC

BARBARA S. MATHEWS
Notary Public - State of Nevada
COUNTY OF LINCOLN
My Commission Expires Aug 24, 1971

Debra J. Wadsworth
CLERK OF LINCOLN COUNTY, NEVADA, DO HEREBY CERTIFY THAT THE LINCOLN COUNTY COMMISSIONERS APPROVED THIS MAP FOR SUBDIVISION PURPOSES.

Debra J. Wadsworth
CLERK OF LINCOLN CO., NEV.

TEMPIUTE ESTATES
LINCOLN COUNTY, NEV.

49722
FILED AT REQUEST OF
D.C. Day
AT 30 MIN PAST 2 P M
ON 17TH DAY OF DEC
1970 IN BOOK
502
LINCOLN COUNTY
CLERK