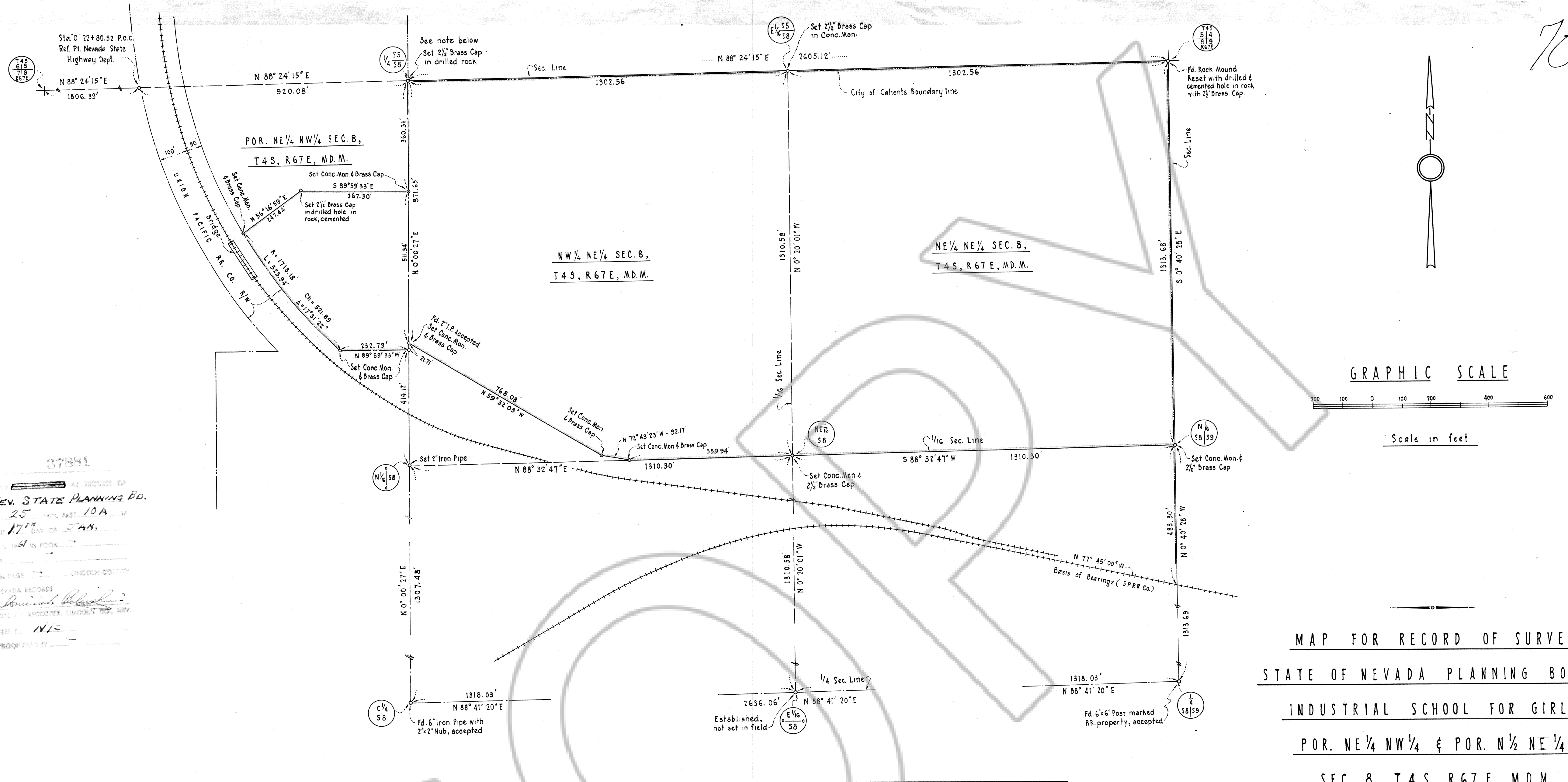


70



37881
 FILED AT REQUEST OF
 NEV. STATE PLANNING Bd.
 AT 25 MIN. EAST 10A M.
 THIS 17th DAY OF JAN.
 ALDEN IN BOOK
 OF
 ON PAGE
 LINCOLN COUNTY
 NEVADA RECORDS
 COUNTY RECORDER LINCOLN CO. NV
 FEES \$ N/S
 PROOF FILED BY

MAP FOR RECORD OF SURVEY
 STATE OF NEVADA PLANNING BOARD
 INDUSTRIAL SCHOOL FOR GIRLS
 POR. NE 1/4 NW 1/4 & POR. N 1/2 NE 1/4
 SEC. 8, T4S, R67E, M.D.M.
 CALIENTE • LINCOLN COUNTY • NEVADA

BOUNDARY DESCRIPTION
 Situate in Lincoln County, State of Nevada.

That portion of the Northeast Quarter (NE 1/4) of the Northwest Quarter (NW 1/4) and that portion of the North half (N 1/2) of the Northeast Quarter (NE 1/4) in Section 8, Township 4 South, Range 67 East, M.D.M., more particularly described as follows: Beginning at the Northeast corner of said Section 8, Township 4 South, Range 67 East, M.D.M.; thence South 0° 40' 28" East along the East line of said Section 8 a distance of 1313.68 feet to the Southeast corner of the aforementioned North half (N 1/2) of the Northeast Quarter (NE 1/4) of Section 8; thence South 88° 32' 47" West along the South line of the said North half (N 1/2) of the Northeast Quarter (NE 1/4) Section 8 a distance of 1870.24 feet to a point; thence North 72° 43' 23" West a distance of 92.17 feet to a point; thence North 59° 32' 03" West a distance of 768.08 feet to a point in the West line of the aforementioned North half (N 1/2) of the Northeast Quarter (NE 1/4) of Section 8; thence South 0° 00' 27" West along the last mentioned West line a distance of 21.71 feet to a point; thence North 89° 59' 33" West a distance of 232.79 feet to a point in the Easterly right-of-way line of the Union Pacific R.R. Co.; thence Northerly along the last mentioned East line being a curve concave to the Northeast having a radius of 1713.18 feet, a central angle of 17° 31' 22", an arc length of 523.94 feet to a point; thence North 56° 16' 59" East a distance of 247.44 feet to a point; thence South 89° 59' 33" East a distance of 367.30 feet to a point in the aforementioned West line of the North half (N 1/2) of the Northeast Quarter (NE 1/4) of Section 8 distant thereon South 0° 00' 27" West 360.31 feet from the North Quarter corner of said Section 8; thence North 0° 00' 27" East along the last mentioned West line a distance of 360.31 feet to the North Quarter corner of said Section 8; thence North 88° 24' 15" East along the North line of said Section 8 a distance of 1302.56 feet to the point of beginning.

ENGINEER'S CERTIFICATE

I, Jack Asher, a registered Civil Engineer and Land Surveyor of the State of Nevada do hereby certify that the survey of the land shown hereon was made under my supervision and direction at the instance of the STATE OF NEVADA, owner of said land; that the material evidence revealed by said survey, in whole or in part, does not appear on any map of record sufficiently to identify or corroborate the results shown hereon; that the monuments found, set, reset or replaced are shown with their description; that the basis of bearing, ties to witness corners or other permanent ties including U.S. Coast and Geodetic control system, legal descriptions, if any, scale of the map, and the relation of this survey to adjacent official County, State and Federal surveys are properly delineated thereon; and that this survey was completed on the 16th day of September, 1960.

Jack Asher
 Registered Civil Engineer & Land Surveyor
 - Nevada License # 305 -

NOTE:
 The North 1/4 corner of Section 8 shown hereon was reset from the State of Nev. Hwy Dept. records, being the most reliable data available. After much effort to find the original corner, it was decided to be considered as a lost corner.

Jack Asher
 Jack Asher

Subscribed and sworn to before me this 17th day of November 1960.

Grace S. Wagner
 Notary Public in and for Clark County, Nevada

My Commission Expires: Jan 22, 1964

SHER ENGINEERING
 1178 Fremont St.
 Las Vegas - Nevada

NO. 37881
 FILED AT THE REQUEST OF
 NEV. STATE PLANNING Bd.
 Date JAN 17 1961 at 10:15 A.M.
 FILE PAGE 70
 Reg. Prof. Eng. Surveys
 OFFICIAL RECORDS BOOK No. A
 LINCOLN COUNTY, NEV. RECORDS
 DOMINICK BELINGHERI RECORDER
 Fee \$ 4.00 Deputy