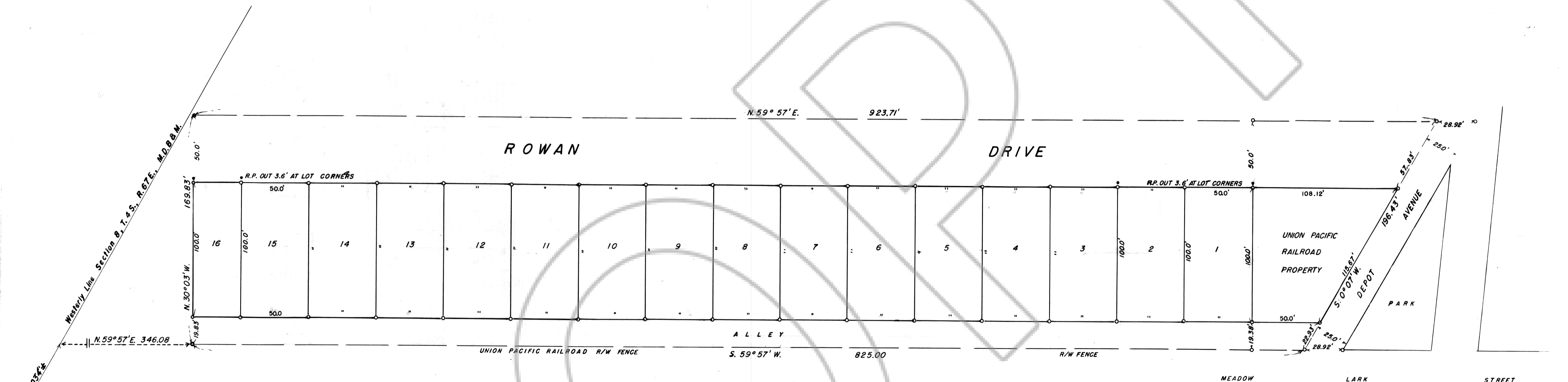
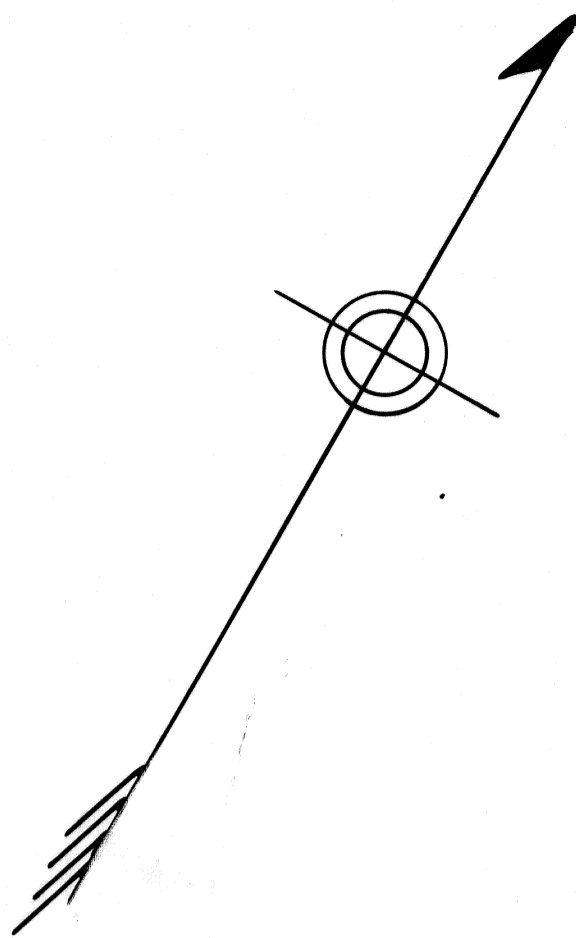


68

Basis Of Bearing: Union Pacific Railroad = N. 59° 57' E.



REGISTERED ENGINEERS CERTIFICATE

I, Charles E. Thompson, a duly Registered Engineer in the State of Nevada, No. 224, do hereby certify that this plat of THE ROWAN SUB-DIVISION, a part of the W1/2 of the SW1/4 of Section 8, T. 4 S., R. 67 E., M.D.B. & M., and further described in Book D-1 on page 189 and in Book J-1 on pages 121 to 124 inclusive in the Office of the County Recorder of Lincoln County, State of Nevada, and from such data as found on file in the said Recorder's Office of said County and State, is a true and accurate plat drawn from field notes of a survey made by me between the eighteenth day of December, 1958, and the sixteenth day of January 1959, to the designated scale hereon.

That this survey and this plat was at the instance of the City Council of the Incorporated City of Caliente, Lincoln County, Nevada, and embraces that tract of land donated by the Union Pacific Railroad Co., Grantor, to said City of Caliente, Grantee, has been divided into Blocks, Lots and Street, and said Street are perpetuated for public use, and that all points have been marked in accordance with the law.

Charles E. Thompson
Charles E. Thompson, Registered Engineer, Nevada 224

BOARD OF COUNTY COMMISSIONERS CERTIFICATE

By Order of The Board of County Commissioners of Lincoln County, State of Nevada, do hereby approve and accept this Plat of the Rowan Subdivision in the Incorporated City of Caliente, Nevada, and order that same be filed in the book of "Plats" in the County Recorder's of Lincoln County, Nevada, on this 19th day of MAY, 1959.

Archie Hughes
Archie Hughes
Chairman of the Board
Board of County Commissioners
Lincoln County, Nevada.

Attest: *Mary A. Montgomery*
Mary A. Montgomery
Clerk of the Board

CERTIFICATE OF THE CITY OF CALIENTE, NEVADA

The City Council of the Incorporated City of Caliente, County of Lincoln, State of Nevada, acting in accordance with the authority vested in said Council by the ordinances, do:

Approve this plat of the ROWAN SUB-DIVISION, being that tract of land donated to said City by the Union Pacific Railroad Company, as described in the deed of conveyance, which is Recorded in Book J-1 on pages 121 to 124 inclusive, and in Book D-1, page 189 of Real Estate Deed, in the Recorder's Office of Lincoln County, Nevada, and

Order that the above sub-division be incorporated as a part of sub-divided area within the limits of said City, and

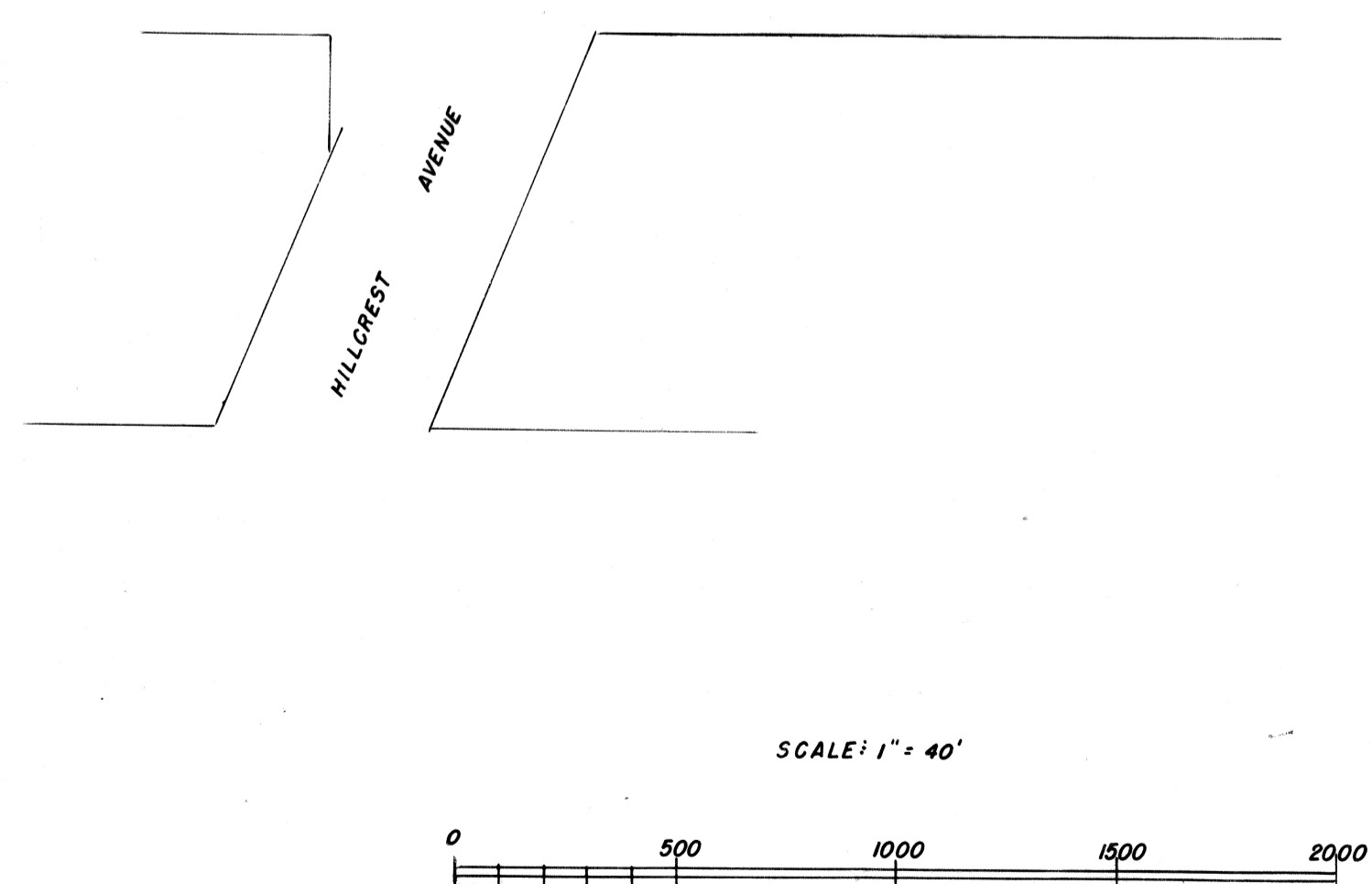
Order this Plat of the ROWAN SUB-DIVISION be the official plat for said sub-division, and that copies of this plat be filed with City Clerk of said City, and

Order that this approved plat be filed with Recorder's Office of said County's official records in the book of Plats.

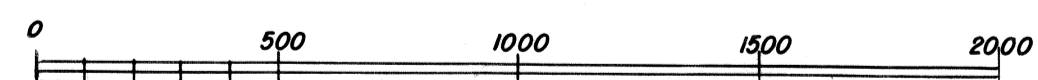
By Order of the City Council of the City of Caliente, County of Lincoln, State of Nevada, on this 5 day of MAY, A.D. 1959.

Ralph L. Smueth
Ralph L. Smueth
Mayor

Attest: *Mary B. Durrant*
Mary B. Durrant
City Clerk



SCALE: 1" = 40'



No. 36650

Filed At Request Of

City Council of the City of Caliente, Nevada.

At 30 Minutes Past 1 P.M.

This 19th Day Of MAY A.D. 1959.

In Book Of Plats

On Page 68

Lincoln County Nevada Records

Dominic Belinghieri
Dominic Belinghieri
County Recorder,
Lincoln County, Nevada.

Fees 4.00

Proof Read By

CITY OF CALIENTE, NEVADA.

ROWAN SUB-DIVISION

SCALE: 1 inch = 40 feet

APPROVED:

Charles E. Thompson
Registered Engineer, No. 224