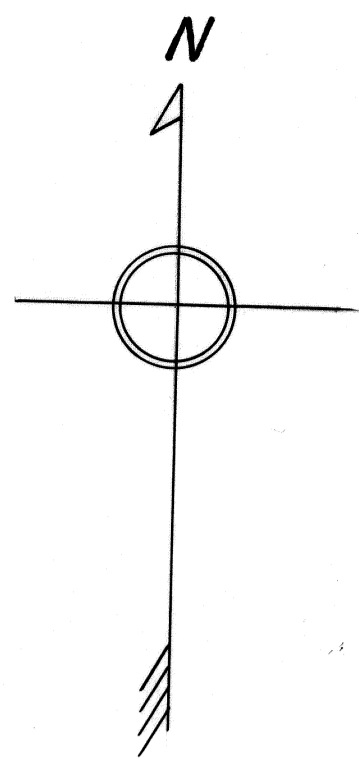
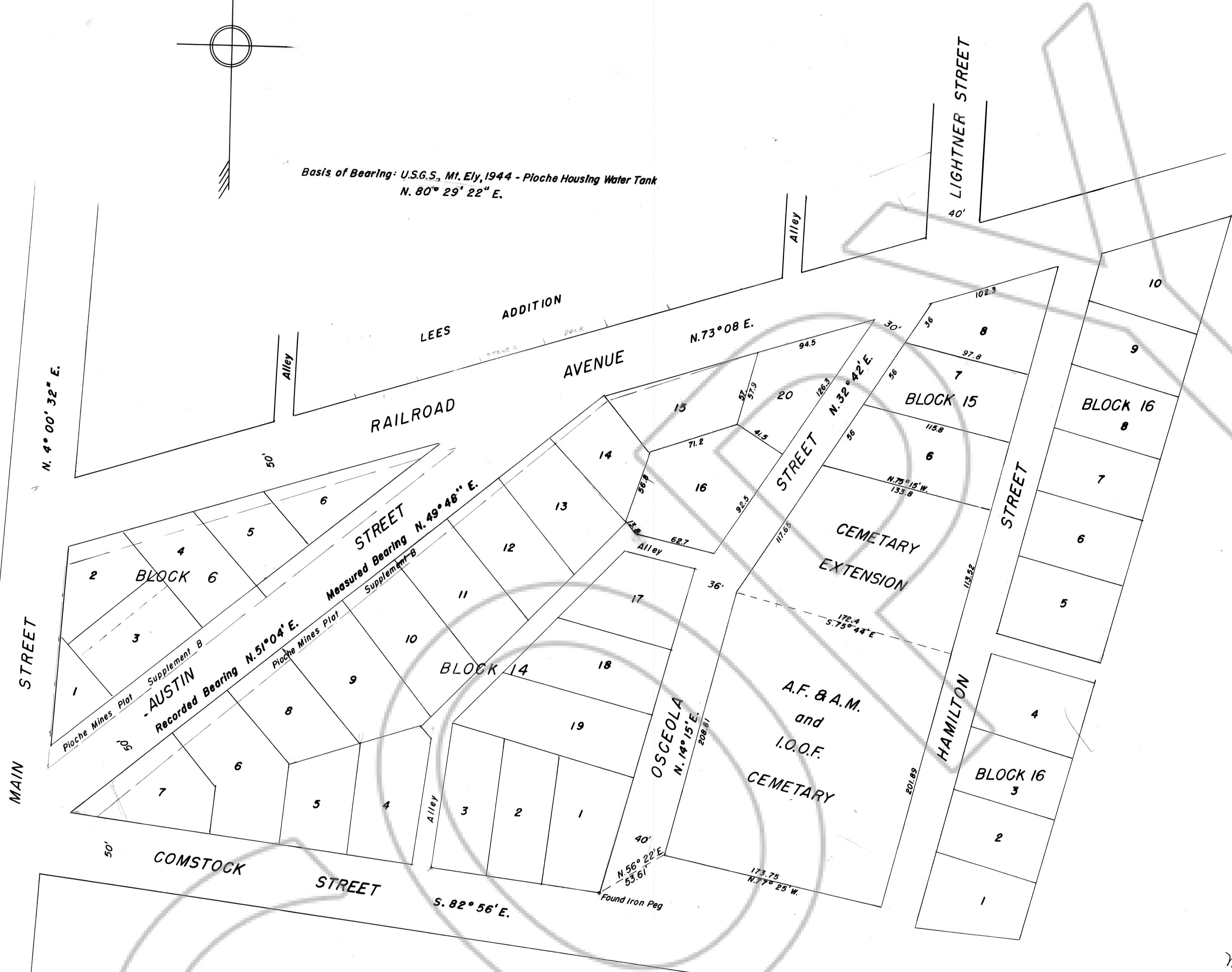


67



Basis of Bearing: U.S.G.S., Mt. Ely, 1944 - Pioche Housing Water Tank  
N. 80° 29' 22" E.

Note: Street shown as DELAMAR on Pioche Mines Consolidated, Inc., Addition Supplement B



**BOARD OF COUNTY COMMISSIONERS CERTIFICATE**  
The Board of County Commissioners of Lincoln County, Nevada, acting as a Town Board for the unincorporated Town of Pioche, Lincoln County, Nevada, do hereby accept and approve this plat of a Supplement to the "Pioche Mines Consolidated, Inc., Addition; Supplement B," amending a certain part of Block 14 and Block 15, the realignment of Osceola Street, and the lots adjacent thereto, and the extension of the A.F. & A.M. and I.O.O.F. Cemetery in the unincorporated Town of Pioche, Lincoln County, Nevada, on this 19th day of December, 1958.

*Don L. Bradshaw*  
Chairman of the Board  
Board of County Commissioners  
Lincoln County, Nevada.

Attest:  
*Mary A. Montgomery*  
Clerk of the Board.

**REGISTERED ENGINEERS CERTIFICATE**  
I, Charles E. Thompson, a Registered Engineer, Nevada No. 224, do hereby certify that this plat, a supplement to the "Pioche Mines Consolidated, Inc., Addition, Supplement B To The Official Map," as filed on page 53 of the official Plat Book in the Office of the Recorder of Lincoln County, Nevada; of Block 14, lots 15 and 16, and the addition of lot 20 to said Block 14; the realignment of part of Osceola Street; and Block 15 showing the closing of Eureka Street; the extension of the A.F. & A.M. and I.O.O.F. Cemetery, and adjustment of lots Nos. 1-2-3-6-7 and 8 in said Block 15, in the unincorporated Town of Pioche, Lincoln County, Nevada.  
This plat is a true and accurate map of the portion of the above mentioned Blocks, Lots and Streets, and was drawn from field notes of a survey made by me between the 15th day of September and the 3rd day of December, 1958, together with data obtained from the official Town Plats of the unincorporated Town of Pioche, Lincoln County, Nevada, in the office of the County Recorder of Lincoln County, Nevada, and represents the alterations, additions, adjustments or corrections, and realignment of the above mentioned Blocks, Lots and Streets, to the best of my knowledge and belief.  
This plat and survey was at the instance of the Board of County Commissioners, acting as a Town Board for the unincorporated Town of Pioche, Lincoln County, Nevada, and the I.O.O.F. Lodge of Pioche, Nevada, and was to extend the North boundary of the existing A.F. & A.M. and I.O.O.F. Cemetery to the North lot line of Lots 3, 4 and 5 of Block 15, together with the closing of Eureka Street, and the realignment of the Northerly part of Osceola Street with the subsequent adjustment of adjacent Blocks and lots, and that all points have been perpetuated in strict accordance with the law.

*Charles E. Thompson*  
Charles E. Thompson, Registered Engineer.  
Nevada No. 224.

**OWNER'S CERTIFICATE**  
The undersigned of the land shown on this plat as lot 16 and 20, lot 20 being created and added to Block 14, of Block 14, and lots 1-2-3-6-7 and 8 of Block 15, and the relocation of the segment of Osceola Street, in the unincorporated Town of Pioche, Lincoln County, State Of Nevada, does, on this 18th day of December, 1958, herewith accept and approve this amended plat "C" to Pioche Mines Consolidated, Inc., Addition, Supplement "B", of said Blocks, Lots and relocation of Osceola Street, in so far as relating to said Blocks, Lots and Street as hereon delineated.

By *John J. Arney*  
President.  
PIOCHE MINES CONSOLIDATED, INC.,

Attest:  
*Don L. Bradshaw*  
Assistant Secretary

**TOWN OF PIOCHE, NEVADA.**  
**SUPPLEMENT "C" TO THE**  
**PIOCHE MINES CONSOLIDATED, INC.,**  
**ADDITION**  
**SUPPLEMENT B**

Scale: 1 inch = 50 feet  
Charles E. Thompson, Pioche, Nevada.

No. 36404  
Filed At Request Of  
Board of County Commissioners  
At 55 Minutes Past 10 A.M.  
This 19th Day Of December, A.D., 1958  
In Book Of Plats  
On Page  
Lincoln County Nevada Records  
*Dominick Belandieri*  
County Recorder,  
Lincoln County, Nevada.

Fees  
Proof Read By