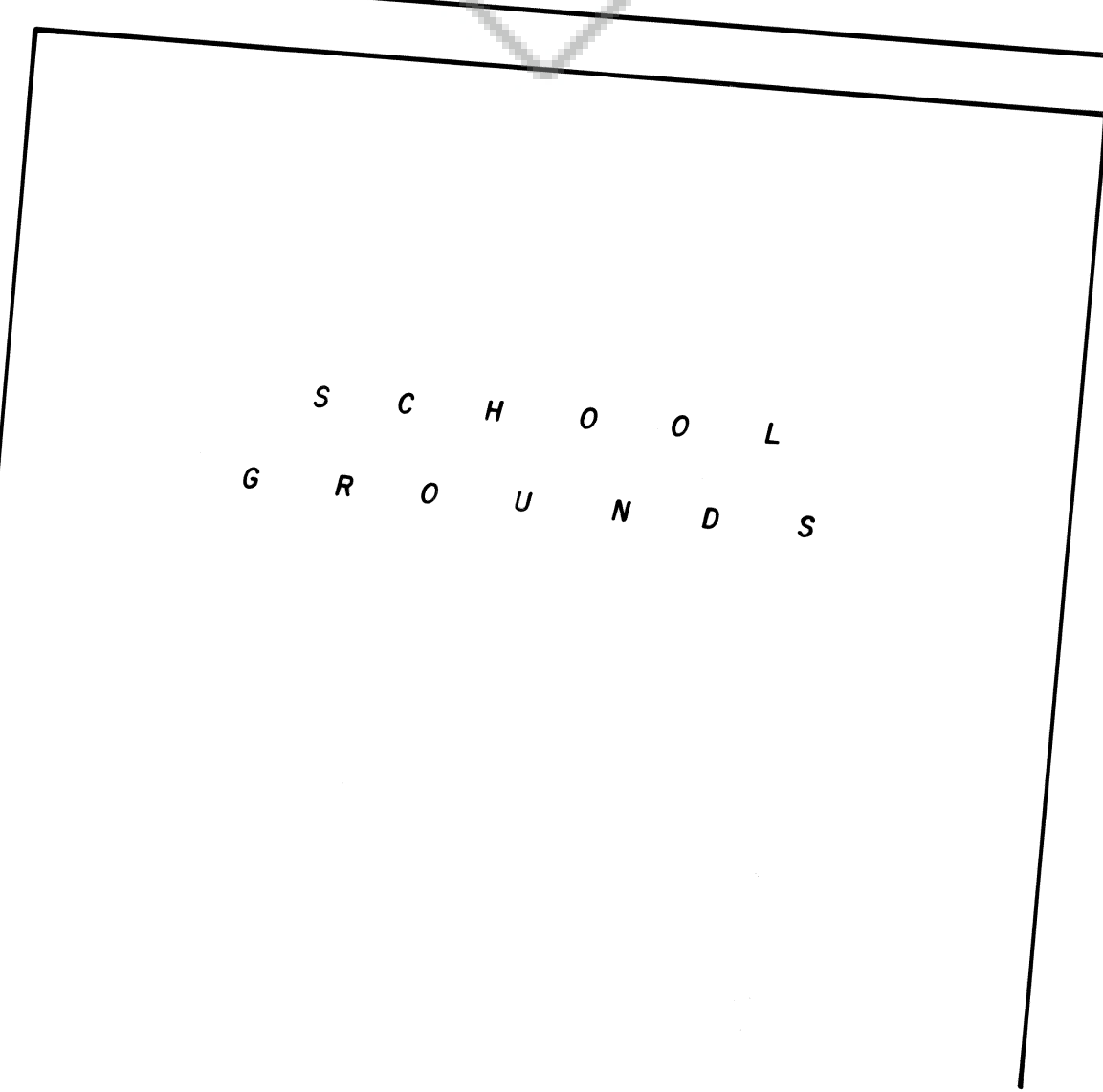
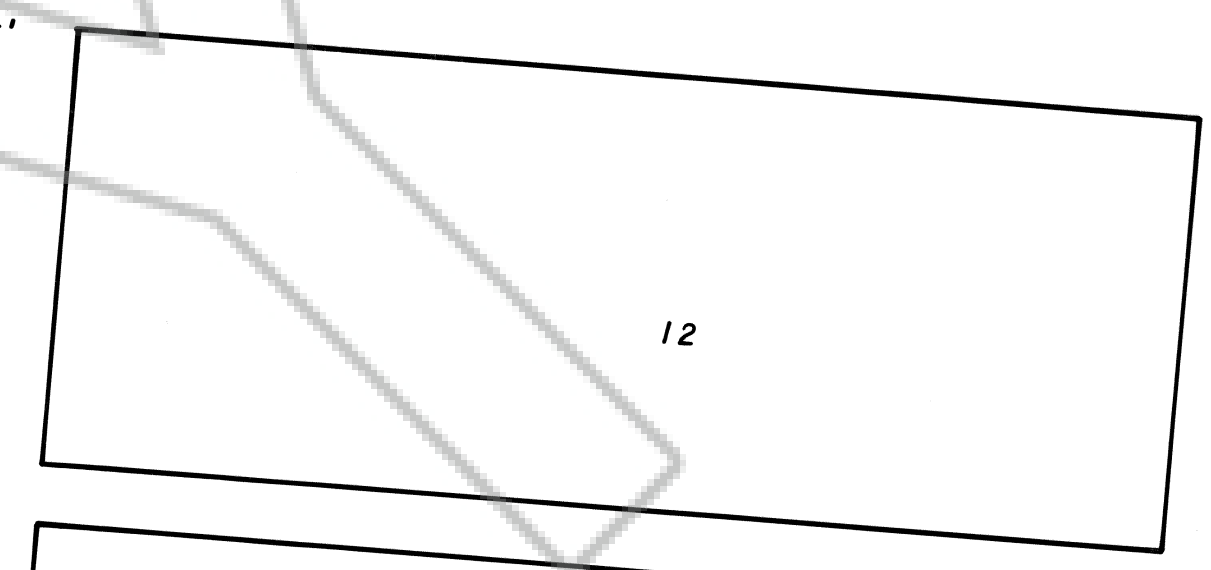
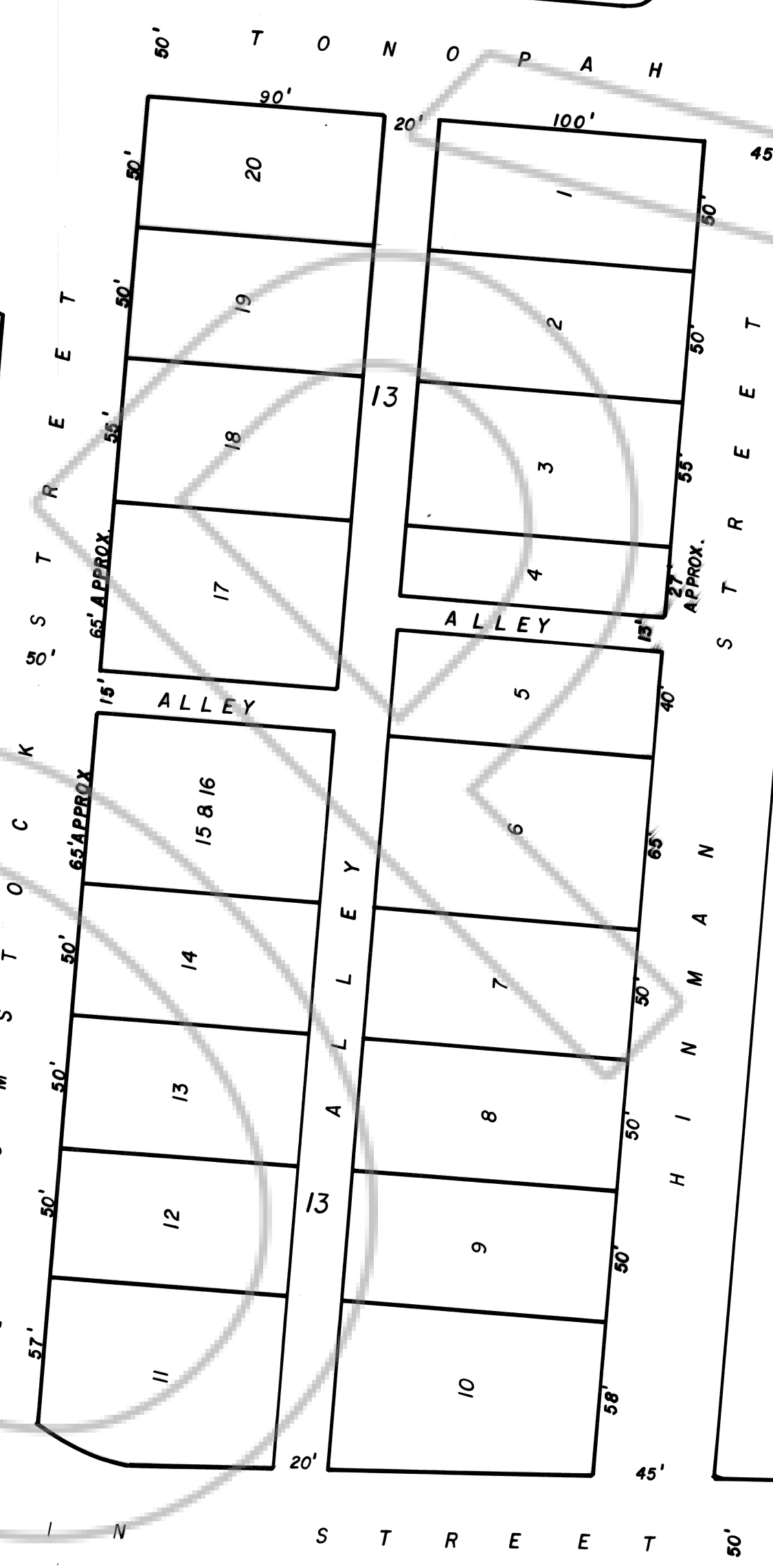
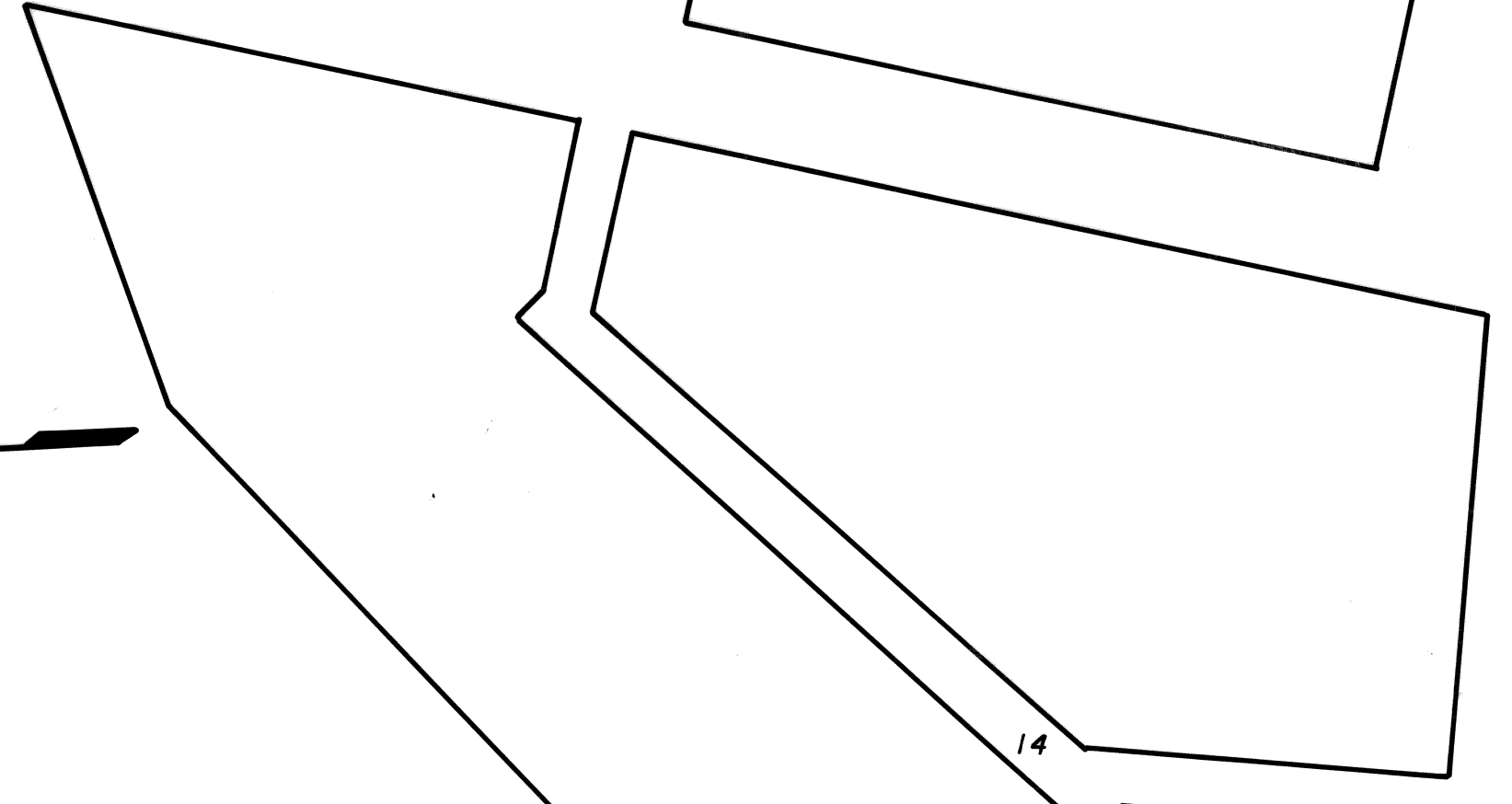
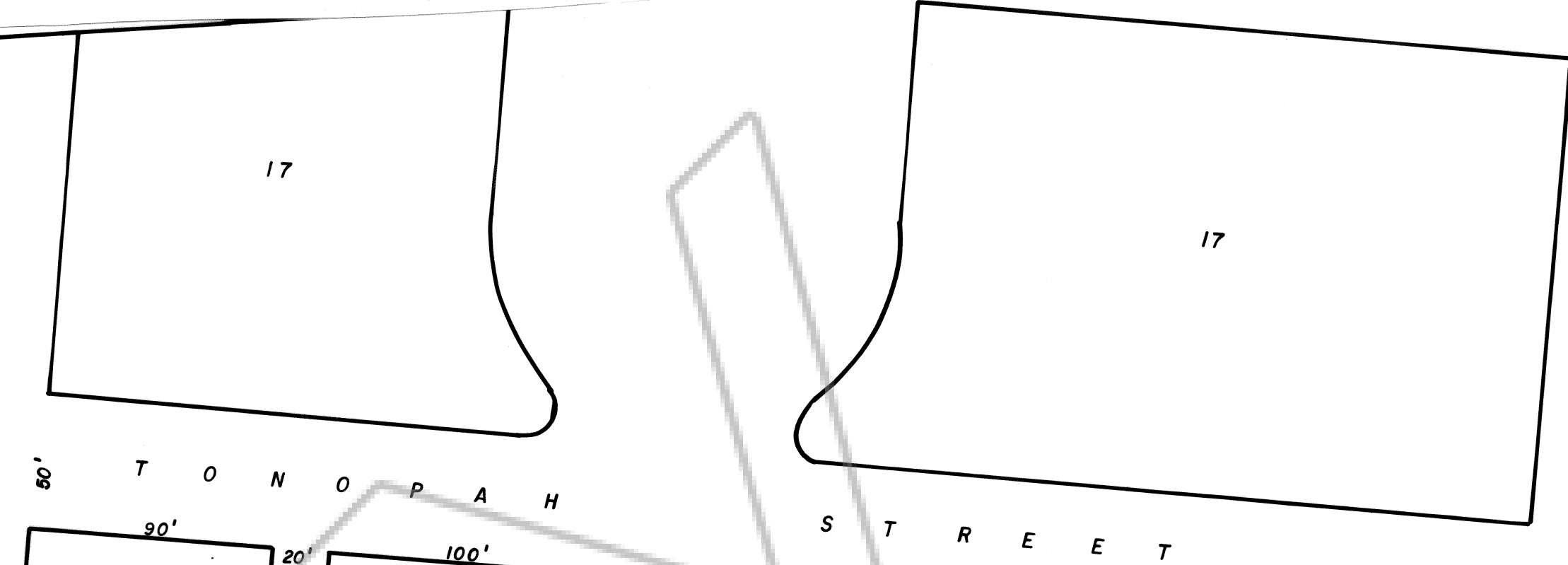
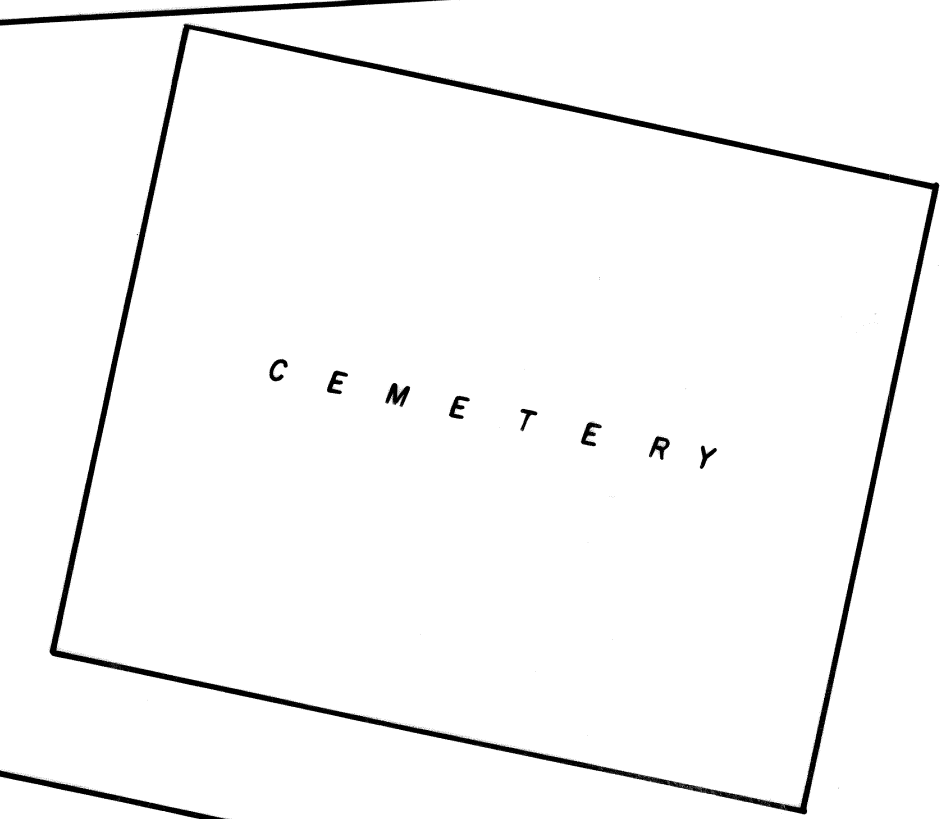
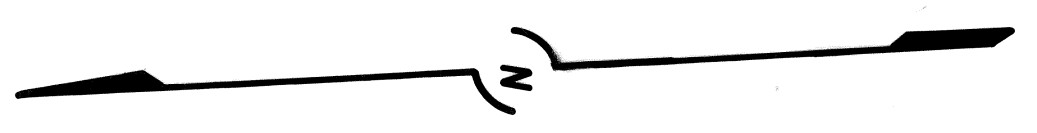


No. 34696
 FILED AND RECORDED AT REQUEST OF
COUNTY COMMISSIONERS
 AT 30 MIN. PAST 11 A. M
 THIS 30 DAY OF APRIL
 A. D. 1957 IN BOOK ---
 OF ---
 ON PAGE --- LINCOLN COUNTY
 NEVADA RECORDS
 S/ DOMINICK BELLINGERI
 COUNTY RECORDER LINCOLN CO., NEV.
 FEES NO FEE
 PROOF READ BY ---



CERTIFICATE OF OWNER
 THE UNDERSIGNED OWNER OF LAND SHOWN ON THIS MAP AS LOTS
 4 5 & 6 IN BLOCK NO. 13, PIOCHE TOWN, LINCOLN COUNTY, STATE OF NEV-
 ADA DOES HEREWITH ACCEPT AND APPROVE THIS REVISED MAP OF SAID
 BLOCK 13, THE REVISIONS BEING IN LOTS 4 5 & 6 AND IN THE WIDTH AND LOC-
 ATION OF ALLEY CONNECTED THEREWITH.
 PIOCHE MINES CONSOLIDATED INC.
 BY _____ PRESIDENT
 ATTEST _____ ASST. SECRETARY

REVISED PLAT OF BLOCK 13
 OFFICIAL MAP OF THE TOWN OF PIOCHE
 PIOCHE, NEVADA
 SURVEYED AND PLOTTED BY S/ BRUCE CONDIE
 DATED: JANUARY 23, 1957
 SCALE: 1" = 50 FT.

OFFICIAL PLAT
 APPROVED BY THE BOARD OF COUNTY COMMISSIONERS OF
 LINCOLN COUNTY, NEVADA, AT A REGULAR MEETING HELD ON
 JANUARY 21 1957
 BY _____ CHAIRMAN