

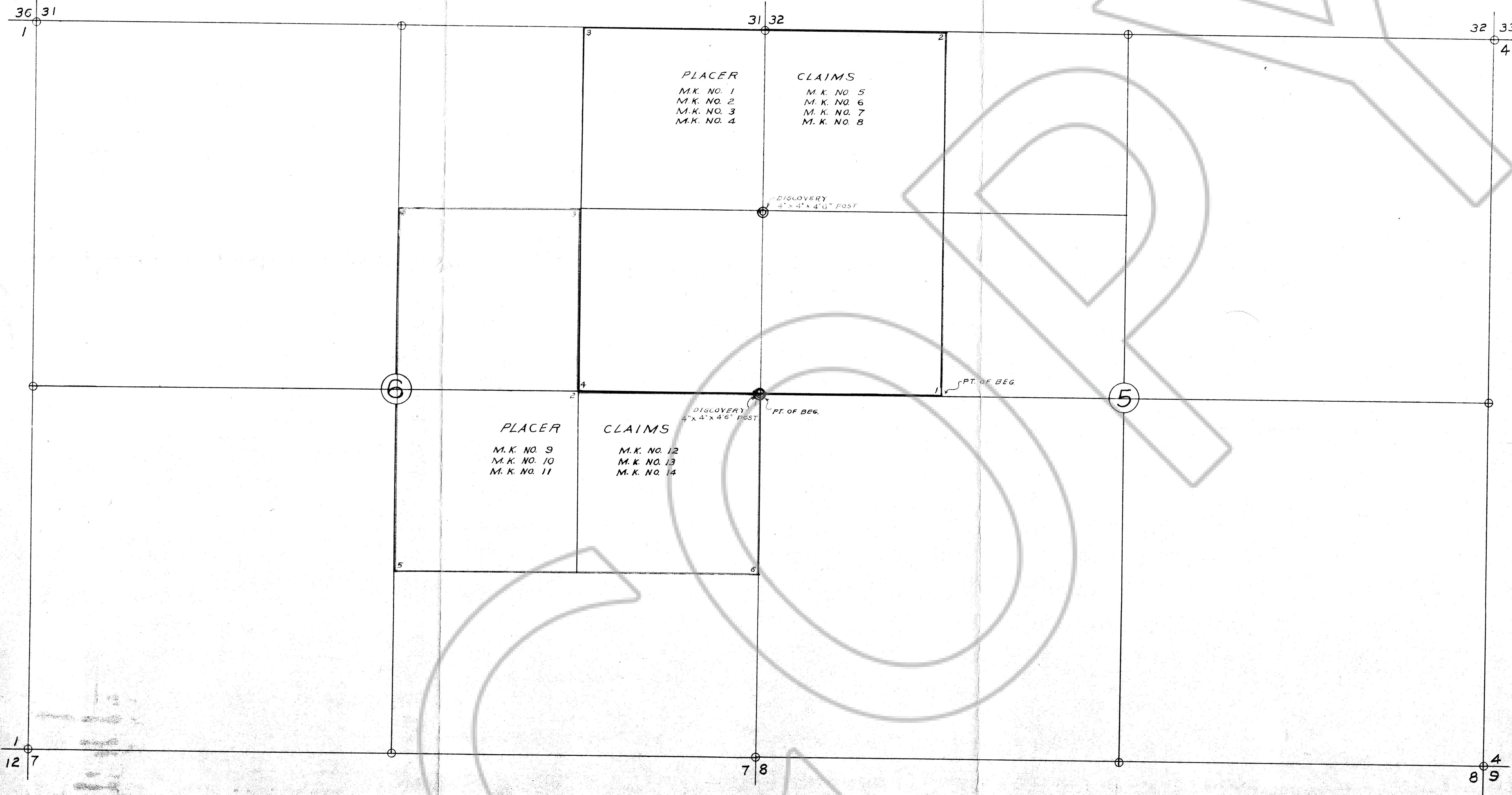
# LOCATION & DESCRIPTIONS OF MORRISON-KNUDSEN CO. INC. PLACER CLAIMS

CHIEF MINING DISTRICT

LINCOLN COUNTY, NEVADA

TOWNSHIP 4 SOUTH

RANGE 67 EAST



## M.K. NO. 1 THRU M.K. NO. 8

BEGINNING AT A POINT, WHICH POINT IS THE S. E. CORNER OF THE S.W. 1/4 OF THE N.W. 1/4 OF SECTION 5, T. 4 S., R. 67 E.; THENCE NORTH ALONG THE EAST LINE OF THE S.W. 1/4 OF THE N.W. 1/4 & THE N.W. 1/4 OF THE N.W. 1/4 OF SECTION 5 TO A POINT, WHICH POINT IS THE N.E. CORNER OF THE N.W. 1/4 OF SECTION 5; THENCE WEST ALONG THE SECTION LINE TO THE N.W. CORNER OF THE N.E. 1/4 OF THE N.E. 1/4 OF SECTION 6; THENCE SOUTH TO THE S.W. CORNER OF THE S.E. 1/4 OF THE N.E. 1/4 OF SECTION 6; THENCE EAST ALONG THE SOUTH LINE OF THE S.E. 1/4 OF THE N.E. 1/4 OF SECTION 6 & THE SOUTH LINE OF THE S.W. 1/4 OF THE N.W. 1/4 OF SECTION 5 TO THE POINT OF BEGINNING. THIS PLAT CONTAINS 160 ACRES, MORE OR LESS.

## M.K. NO. 9 THRU M.K. NO. 14

BEGINNING AT A POINT, WHICH IS THE DISCOVERY MONUMENT, AND THE N.E. CORNER OF THE N.E. 1/4 OF THE S.E. 1/4 OF SECTION 6, T. 4 S., R. 67 E.; THENCE WEST 1320' TO THE N.W. CORNER OF THE N.E. 1/4 OF THE S.E. 1/4; THENCE NORTH 1320' TO THE N.E. CORNER OF THE S.W. 1/4 OF THE N.E. 1/4; THENCE WEST 1320' TO THE N.W. CORNER OF THE S.W. 1/4 OF THE N.E. 1/4; THENCE SOUTH 2640' TO THE S.W. CORNER OF THE N.E. 1/4 OF THE S.E. 1/4; THENCE EAST 2640' TO THE S.E. CORNER OF THE N.E. 1/4 OF THE S.E. 1/4; THENCE NORTH 1320' TO THE POINT OF BEGINNING. THIS PLAT CONTAINS 120 ACRES, MORE OR LESS.



No. 30664

FILED AT REQUEST OF  
*Howard J. Bellows, Dist. Eng.*  
AT \_\_\_\_\_ MIN. PAST \_\_\_\_\_ M  
THIS \_\_\_\_\_ DAY OF \_\_\_\_\_  
A. D. 19\_\_\_\_ IN BOOK \_\_\_\_\_  
OF \_\_\_\_\_  
ON PAGE \_\_\_\_\_ LINCOLN COUNTY  
NEVADA RECORDS  
DOMINICK BELINGHERI *D.B.*  
COUNTY RECORDER, LINCOLN CO. NEV  
FEES \$ *4.50*  
PROOF READ BY \_\_\_\_\_

COPY

*HK Claims*

*HK Claims*