

# SUN GOLD MANOR UNIT NO. 1

LOCATED IN THE UNINCORPORATED TOWN OF PANACA, LINCOLN COUNTY, NEVADA  
BEING A SUBDIVISION OF A PORTION OF THE EAST HALF OF THE NORTHWEST QUARTER OF  
SECTION 9, T2S, R68E, MT. DIABLO BASE & MERIDIAN

No. 27842  
FILED AND RECORDED AT REQUEST OF  
A. L. Scott  
AT 15 MIN. PAST 10 A.M.  
THIS 30th DAY OF Sept.  
A. D. 1952 IN BOOK  
OF  
ON PAGE \_\_\_\_\_ LINCOLN COUNTY  
NEVADA RECORDS  
S/Dominick Belingheri  
COUNTY RECORDER, LINCOLN CO., NEV.  
FEES \$5.00  
PROOF READ BY \_\_\_\_\_

Fd 2"x4" for N1/4 Cor.  
Sec. 9, T 2 S., R 68 E., M. D. M.  
August 1952

SCALE 1" = 100'

I, Samuel S. Arentz, of Pioche Nevada, a duly registered Professional Engineer and Land Surveyor in the State of Nevada, do hereby certify that this plat is a true and accurate map of the land surveyed at my direction and subdivided into lots, and streets, at the instance of Johnson, Inc. A corporation of the State of California, qualified to do business in the State of Nevada, that the location of said lots and streets has been definitely established and perpetuated in strict accordance with the laws and as shown hereon, that the lots and streets shown hereon are situated wholly within the East Half (E1/2) of the Northwest Quarter (NW1/4) of Section 9, Township 2 South Range 68 East, M.D.M., Nevada, in the Town of Panaca, County of Lincoln, State of Nevada, and more particularly described by metes and bounds as follows:  
Beginning at a point on the East line of the said East 1/2 of the NW1/4 of Section 9, which bears S00°07' W. a distance of 10807 feet from the N1/4 Section Corner on the North line of said Section 9;  
Thence S00°07' W along the East line of the said East 1/2 of the NW1/4 of said Section 9, a distance of 1237.50 feet;  
Thence N89°24' W, a distance of 1038.43 feet;  
Thence N00°36' E, a distance of 618.75 feet;  
Thence S89°24' E, a distance of 20.00 feet;  
Thence N02°08' 58" E, a distance of 373.96 feet;  
Thence N07°50' 13" E, a distance of 201.09 feet;  
Thence S89°42' 08" E, a distance of 180.00 feet;  
Thence N82°36' 27" E, a distance of 109.20 feet;  
Thence Northeastly on a curve concave to the Southeast having a Radius of 1160 feet, thru an angle of 11°24'05", a distance of 230.83 feet. The initial Radial line bears S19°32'05" E,  
Thence S89°24' E, a distance of 463.30 feet to the point of beginning.  
This said survey was completed September 3rd, 1952, and the said Unit No. 1 contains less than 40 Acres, Approximately 29 acres.

S. S. ARENTZ  
Registered Engineer & Land Surveyor, Nevada No. 332

Johnson, Inc., do hereby certify that they are the owners of the parcel of land which is shown within the shaded lines upon the within map of Sun Gold Manor Unit No. 1, located in the town of Panaca, Nevada, and particularly described in the Engineers Certificate hereon, except that the streets shown thereon have already been dedicated for Public use.

Wm. A. Johnson President  
R. H. Walter Asst. Sec.

State of California } ss.  
County of Riverside }

On this 8th day of Sept. A. D. 1952, personally appeared before me Dorathea De Peach, a Notary Public in and for the county of Riverside, State of California, W. A. Johnson and R. H. Walter, known to me to be the officers of the corporation that executed the foregoing instrument, and upon oath did depose that they are the officers of said corporation as above designated; that they are acquainted with the seal of said Corporation, and that the seal affixed to said instrument is the corporate seal of said corporation; that the signatures to said instrument were made by the officers of said corporation as indicated after said signatures, and that the said corporation executed the said instrument freely and voluntarily and for the uses and purposes therein mentioned.

IN WITNESS WHEREOF, I have hereunto set my hand and affixed my official seal the day and year in this certificate first above written

Dorathea De Peach  
Notary Public in and for the County of Riverside, State of California

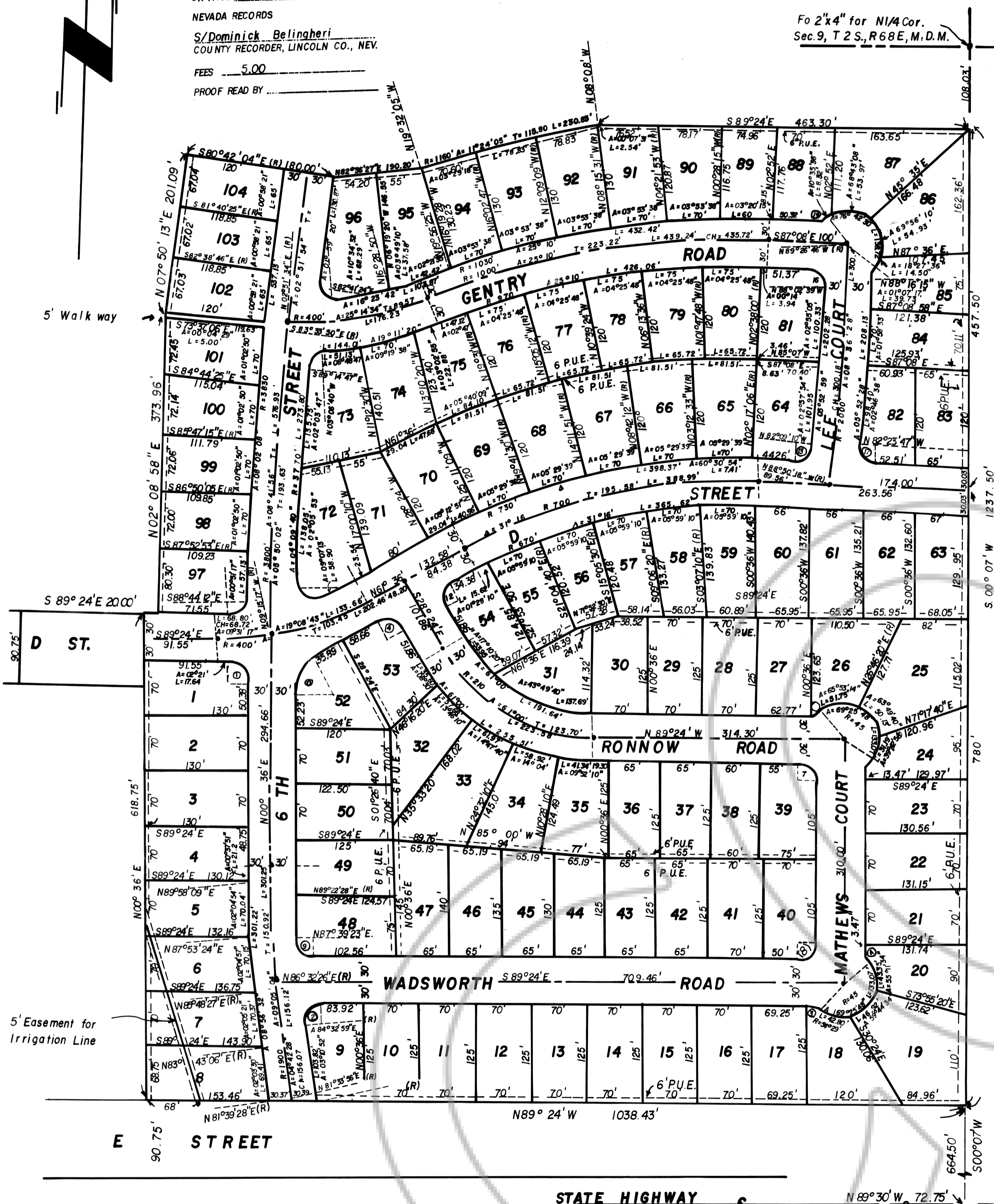
(NOTARIAL SEAL)

Approved and accepted this 30th day of Sept, 1952 by the Board of County Commissioners of the County of Lincoln, State of Nevada, acting as a Town Board for the unincorporated town of Panaca

ATTEST: Esther Rollins Sherwood County Clerk  
Desmond HALL Chairman of the Board of County Commissioners of the County of Lincoln, in The State of Nevada

Map and Computations by J.F. Davidson, C.E. R.E. 862  
36.46 7th Street, Riverside, California

RETURN DATA			
No	Δ	R	T
1	92°21'	20	20.84'
2	96°03' 01"	20	22.23'
3	39°42' 54"	20	7.22'
4	39°42' 54"	20	7.22'
5	39°42' 54"	20	7.22'
6	90°00'	20	20.00'
7	90°00'	20	20.00'
8	90°00'	20	20.00'
9	87°03' 23"	20	19.00'
10	87°00'	50	29.45'
11	90°00'	20	20.00'
12	85°00' 10"	20	20.00'
13	85°00' 10"	20	20.00'
14	110°52' 20"	20	18.33'
15	81°08' 07"	20	17.12'
16	89°05' 51"	20	19.69'
17	94°44' 13"	20	21.73'
18	39°07' 51"	20	7.11'
19	39°42' 54"	20	7.22'
20	103°12' 54"	20	25.24'
21	85°53' 34"	20	18.62'



Note: The basis of bearings is the center line of state Highway as being N85°50' W as shown on file in the office of the state of Nevada Highway Department.

Fd 2"x4" in pile of stone for  
S1/4 Cor. Sec. 9, T2S R68E M.D.M.

There is a typo error on the copy of the sheet #63: The distance South from the 1/4 of 4 should be 108.07 NOT 103.03