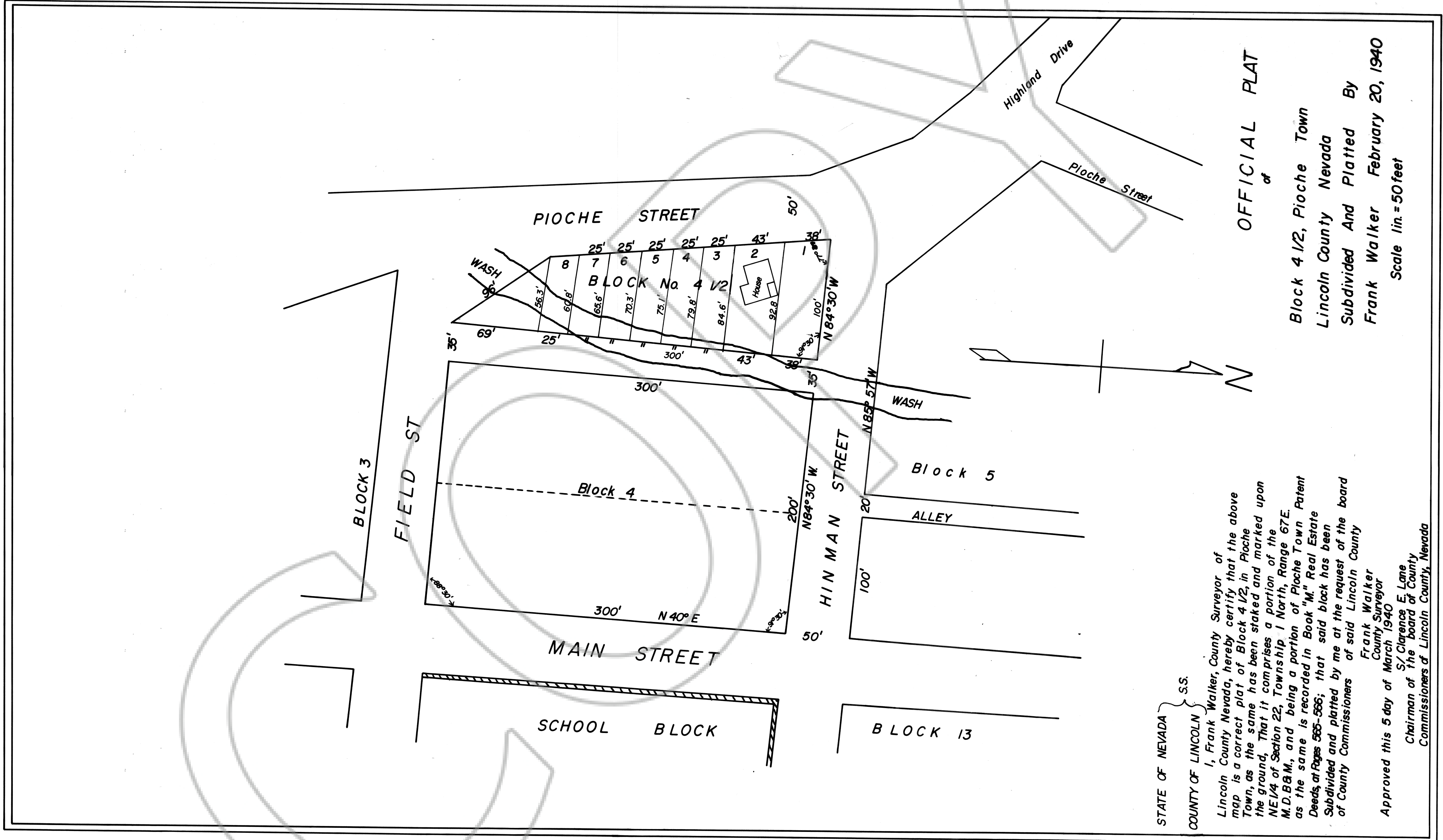


No. 14875
 FILED AND RECORDED AT REQUEST OF
 County Commissioners
 AT 10 MIN. PAST 10 A.M.
 THIS 7 DAY OF MAR.
 A.D. 1940 IN BOOK
 OF
 ON PAGE LINCOLN COUNTY
 NEVADA RECORDS
 S/ J.E. Roeder
 COUNTY RECORDER, LINCOLN CO., NEV.
 FEES
 PROOFREAD BY



OFFICIAL PLAT

of
 Block 4 1/2, Pioche Town
 Lincoln County Nevada
 Subdivided And Platted By
 Frank Walker February 20, 1940
 Scale 1 in. = 50 feet

STATE OF NEVADA }
 COUNTY OF LINCOLN } S.S.
 I, Frank Walker, County Surveyor of
 Lincoln County Nevada, hereby certify that the above
 map is a correct plat of Block 4 1/2, in Pioche
 Town, as the same has been staked and marked upon
 the ground. That it comprises a portion of the
 NE 1/4 of Section 22, Township 1 North, Range 67E.
 M.D.B.M., and being a portion of Pioche Town Patent
 Deeds, at Pages 565-566; that said block has been
 Subdivided and platted by me at the request of the board
 of County Commissioners of said Lincoln County
 Frank Walker
 County Surveyor
 Approved this 5 day of March 1940
 S/ Clarence E. Lane
 Chairman of the board of County
 Commissioners of Lincoln County, Nevada

Copied from original by Dominick Belingeri