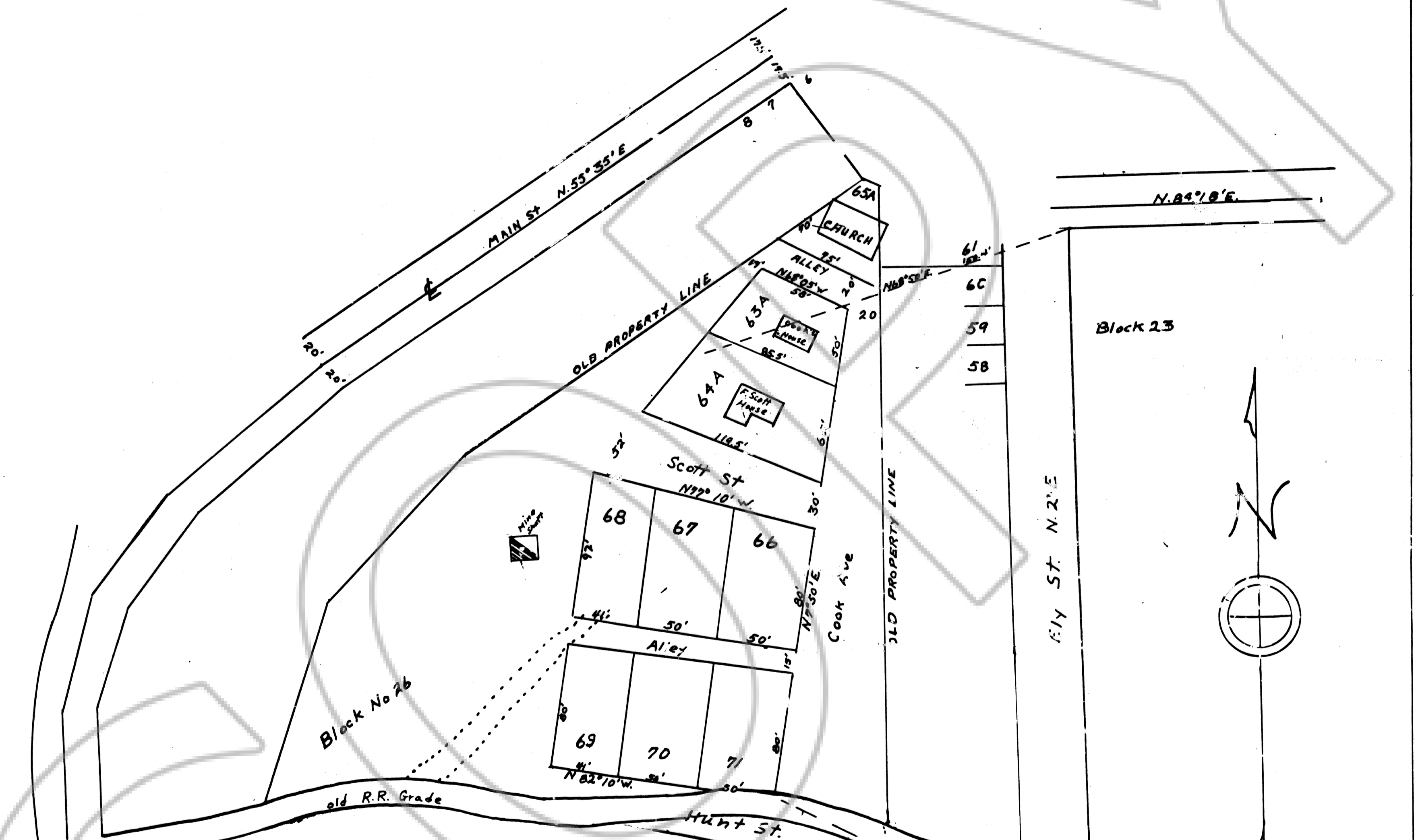


OFFICIAL PLAT
 SUPPLEMENT "C" PIOCHE TOWNSITE
 EMBRACING
 LOTS 63A TO 71 INCLUSIVE IN Block No 26
 SURVEYED & PLOTTED BY FRANK WALKER
 PIOCHE NEVADA MARCH 20, 1938
 SCALE 1"=50'



MAP No 17
 Copied by Dominick Belingeri
 from map filed in Recorder's
 Office Mar. 7, 1940

14874
 FILED AND RECORDED AT REQUEST OF
 COUNTY COMMISSIONERS
 AT 10 MIN PAST 10 A M
 THIS 7 DAY OF MAR
 A. D. 1938 IN BOOK
 OF
 ON PAGE LINCOLN COUNTY
 NEVADA RECORDS
 J. F. MUESSER
 COUNTY RECORDER, LINCOLN CO. NEV.
 FEES \$
 PROOF READ BY

State of Nevada }
 County of Lincoln } S.S.
 I, Frank Walker, County Surveyor of Lincoln
 County, Nevada, do hereby certify that the above
 Map has been correctly drawn to the designated
 scale from field notes of a survey made by me,
 as the same has been staked and marked upon
 the ground.
 Frank Walker
 County Surveyor

at a regular meeting of the board of County
 Commissioners held at Pioche, Nevada on the --- day
 of April 1938 the Above Map was duly examined
 and Approved as designated "SUPPLEMENT C" TO THE
 TOWN OF PIOCHE, BLOCK No 26
 Chairman of the board
 Filed with the County Clerk of Lincoln County Nev.
 on this --- day of April 1938
 County Clerk

22 23 T. 1 N. R. 67 E
 21 26