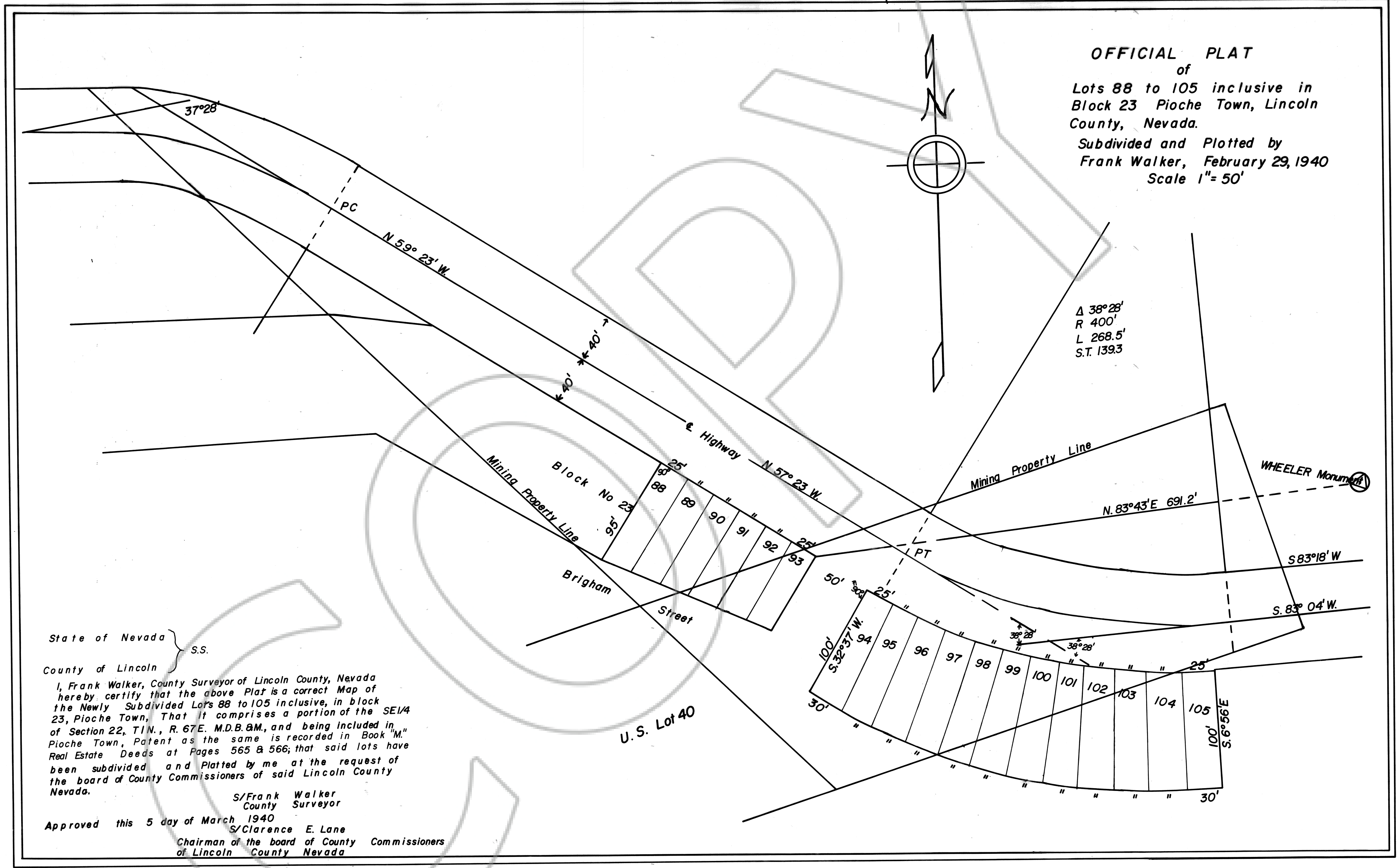


No. 14873  
 FILED AND RECORDED AT REQUEST OF  
 Co. Commissioners  
 AT 11 MIN. PAST 10 A. M.  
 THIS 7 DAY OF MARCH  
 A.D. 1940 IN BOOK  
 OF  
 ON PAGE LINCOLN COUNTY  
 NEVADA RECORDS  
 S/ J. F. Roeder  
 COUNTY RECORDER LINCOLN CO., NEV.  
 FEES  
 PROOF READ BY

OFFICIAL PLAT  
 of  
 Lots 88 to 105 inclusive in  
 Block 23 Pioche Town, Lincoln  
 County, Nevada.  
 Subdivided and Plotted by  
 Frank Walker, February 29, 1940  
 Scale 1" = 50'



State of Nevada }  
 County of Lincoln } S.S.  
 I, Frank Walker, County Surveyor of Lincoln County, Nevada  
 hereby certify that the above Plat is a correct Map of  
 the Newly Subdivided Lots 88 to 105 inclusive, in block  
 23, Pioche Town, That it comprises a portion of the SE 1/4  
 of Section 22, T1N., R. 67E. M.D.B. & M., and being included in  
 Pioche Town, Patent as the same is recorded in Book "M,"  
 Real Estate Deeds at Pages 565 & 566; that said lots have  
 been subdivided and Platted by me at the request of  
 the board of County Commissioners of said Lincoln County  
 Nevada.  
 S/Frank Walker  
 County Surveyor  
 Approved this 5 day of March 1940  
 S/Clarence E. Lane  
 Chairman of the board of County Commissioners  
 of Lincoln County Nevada