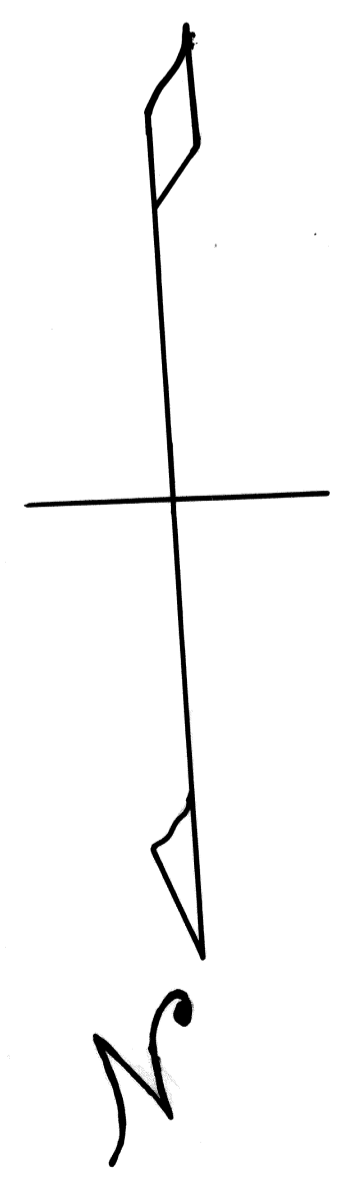


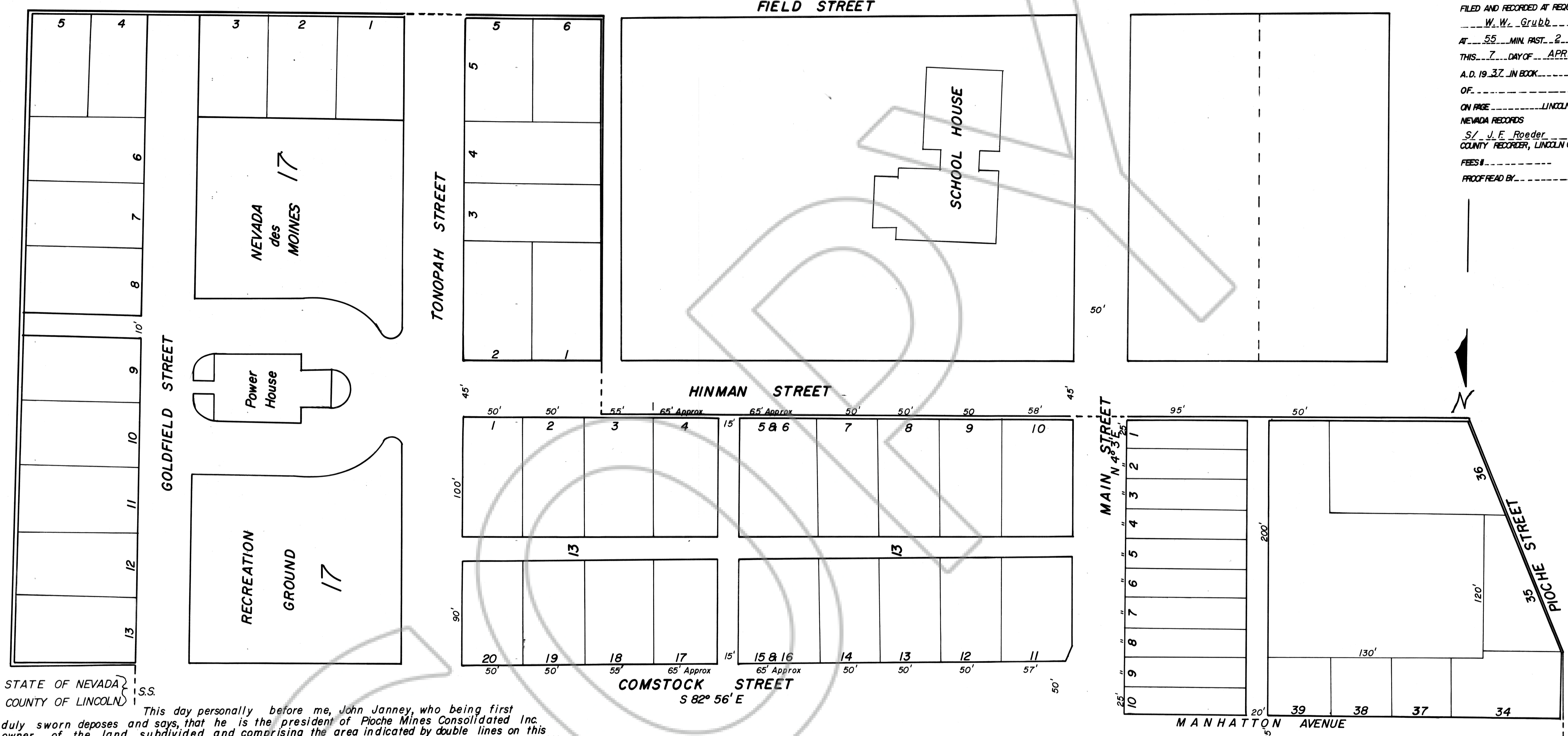
**PIOCHE MINES
CONSOLIDATED INC.
ADDITION**

SUPPLEMENT "B" TO OFFICIAL MAP
OF THE TOWN OF PIOCHE

Scale - 1" = 50'
continued on next Page



Continued From other Page (53)



No. 1194
 FILED AND RECORDED AT REQUEST OF
 W. W. Grubb
 AT 55 MIN. PAST 2 P. M.
 THIS 7 DAY OF APRIL
 A. D. 1937 IN BOOK
 OF
 ON PAGE LINCOLN COUNTY
 NEVADA RECORDS
 S/ J. E. Roeder
 COUNTY RECORDER, LINCOLN CO. NEV.
 FEES \$
 PROOF READ BY

STATE OF NEVADA } S.S.
 COUNTY OF LINCOLN }

This day personally before me, John Janney, who being first duly sworn deposes and says, that he is the president of Pioche Mines Consolidated Inc. owner of the land subdivided and comprising the area indicated by double lines on this map, and being a portion of the East half of the N.E. Quarter of Section 22, Township 1 N. R. 67 East, M.D.M., as the same are conveyed in a deed from the United States to Mortimer Fuller, as trustee for the Town of Pioche, Under date of March 2, 1875, and recorded in book M, Real Estate deeds, at pages 565 & 566, that said lands, comprising block, 5, 6, 13, 14, 15, 16, & 17, are of a total area of less than forty acres; that as president of said corporation he has caused this said subdivision and map to be made, that said corporation does hereby declare and now dedicate for public use and benefit the streets and alleys shown thereon; that he has to be affixed his hand and the official seal of said corporation, this 2nd day of April, 1937.

I, Frank Walker, the duly qualified and acting County Surveyor of Lincoln County, Nevada, do hereby certify that this map is a true and accurate plat of the lands surveyed by me and layed out into blocks, lots, streets & alleys at the instance of Pioche Mines Consolidated Inc. owner of said lands, that the locators of said blocks, lots, streets & alleys has been definitely established and perpetuated in strict accordance with law, and as shown hereon that the whole area is less than Forty acres and that all the blocks, lots, streets, & alleys are situated wholly within Section 22, Township 1 North, Range 67 East, M.D.M. and that the survey was completed on the 24th day of February 1937

Seal
 Attest:
 S/W. W. Grubb
 secretary

PIOCHE MINES CONSOLIDATED, INC.
 by S/ John Janney
 president

Subscribed and sworn to before me this 5th Day of April 1937

Frank Walker
 notary public

S/ Frank Walker
 county surveyor

OFFICIAL PLAT
 Approved by the board of County Commissioners
 of Lincoln County, Nevada, at a regular meeting held
 on April 6th 1937.

by John W. Cole
 chairman

Scale - 1" = 50'

Copied from Map filed in Records office April 21, 1937
 by Dominick Belingeri

Drawn by R. W. H.